

Datasheet for ABIN6149390

anti-Topoisomerase I antibody (AA 1-100)[Go to Product page](#)**3** Images

Overview

Quantity:	100 µL
Target:	Topoisomerase I (TOP1)
Binding Specificity:	AA 1-100
Reactivity:	Human
Host:	Rabbit
Clonality:	Polyclonal
Conjugate:	This Topoisomerase I antibody is un-conjugated
Application:	Western Blotting (WB), Immunohistochemistry (IHC), Immunoprecipitation (IP)

Product Details

Immunogen:	A synthetic peptide corresponding to a sequence within amino acids 1-100 of human DNA topoisomerase I (DNA topoisomerase I (TOP1)) (NP_003277.1).
Sequence:	MSGDHLHNS QIADFRLND SHKHKDKHKD REHRHKEHKK EKDREKSKHS NSEHKDSEKK HKEKEKTKHK DGSSEKHKDK HKDRDKEKRK EEKVRASGDA
Isotype:	IgG
Cross-Reactivity:	Human, Mouse
Characteristics:	Polyclonal Antibodies

Target Details

Target:	Topoisomerase I (TOP1)
---------	------------------------

Target Details

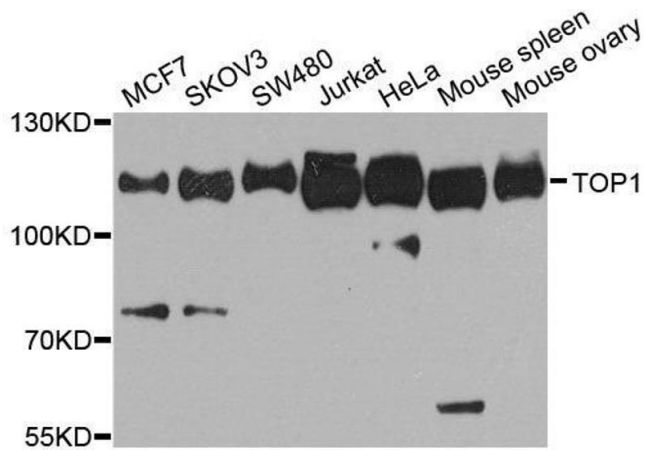
Alternative Name:	TOP1 (TOP1 Products)
Target Type:	Viral Protein
Background:	This gene encodes a DNA topoisomerase, an enzyme that controls and alters the topologic states of DNA during transcription. This enzyme catalyzes the transient breaking and rejoining of a single strand of DNA which allows the strands to pass through one another, thus altering the topology of DNA. This gene is localized to chromosome 20 and has pseudogenes which reside on chromosomes 1 and 22.,TOP1,TOPI,Epigenetics & Nuclear Signaling,RNA Binding,Cancer,Drug resistance,Topoisomerases,TOP1
Molecular Weight:	90 kDa
Gene ID:	7150
UniProt:	P11387
Pathways:	Caspase Cascade in Apoptosis, Stem Cell Maintenance

Application Details

Application Notes:	WB,1:500 - 1:2000,IHC,1:50 - 1:200,IP,1:20 - 1:50
Comment:	HIGH QUALITY
Restrictions:	For Research Use only

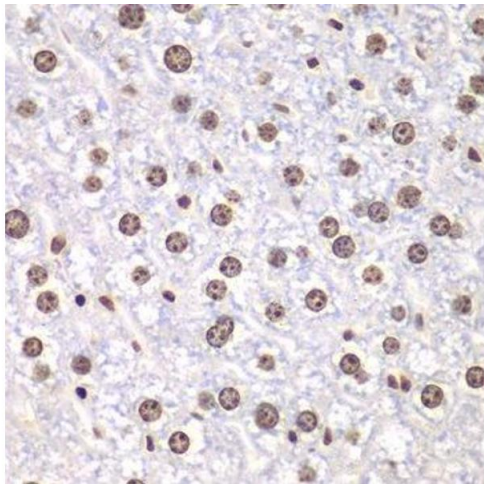
Handling

Format:	Liquid
Buffer:	PBS with 0.02 % sodium azide,50 % glycerol, pH 7.3.
Preservative:	Sodium azide
Precaution of Use:	This product contains Sodium azide: a POISONOUS AND HAZARDOUS SUBSTANCE which should be handled by trained staff only.
Storage:	-20 °C
Storage Comment:	Store at -20°C. Avoid freeze / thaw cycles.



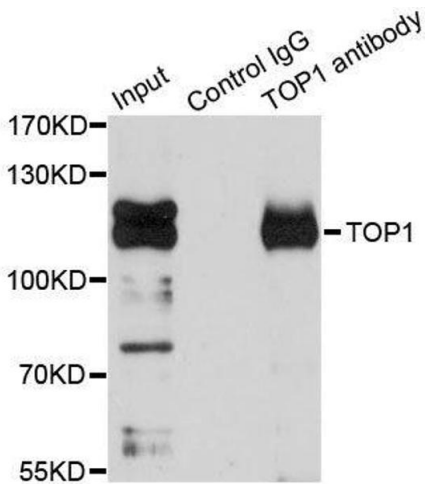
Western Blotting

Image 1. Western blot analysis of extracts of various cell lines, using TOP1 antibody.



Immunohistochemistry (Paraffin-embedded Sections)

Image 2. Immunohistochemistry of paraffin-embedded mouse liver using TOP1 antibody.



Immunoprecipitation

Image 3. Immunoprecipitation analysis of 150ug extracts of Jurkat cells using 3ug TOP1 antibody.