

Datasheet for ABIN6149398  
**anti-TOPBP1 antibody (AA 1253-1522)**



[Go to Product page](#)

4 Images

1 Publication

## Overview

Quantity:	100 µL
Target:	TOPBP1
Binding Specificity:	AA 1253-1522
Reactivity:	Human
Host:	Rabbit
Clonality:	Polyclonal
Conjugate:	This TOPBP1 antibody is un-conjugated
Application:	Western Blotting (WB)

## Product Details

Immunogen:	Recombinant fusion protein containing a sequence corresponding to amino acids 1253-1522 of human TOPBP1 (NP_008958.2).
Sequence:	KIITIEETHE ELKKQYIFQL SSLNPQERID YCHLIEKLG LVIKQCFDP TCTHIVGHP LRNEKYLASV AAGKWWLHRS YLEACRTAGH FVQEEDYEWG SSSILDVLTG INVQRRRLAL AAMRWRKKIQ QRQESGIVEG AFSGWKVILH VDQSREAGFK RLLQSGGAKV LPGHSVPLFK EATHLFSDLN KLPDDSGVN IAEEAAQNVY CLRTEYIADY LMQESPPEV NYCLPEAISF IQNNKELGTG LSQKRKAPTE KNKIKRPRVH
Isotype:	IgG
Cross-Reactivity:	Human, Mouse
Characteristics:	Polyclonal Antibodies

## Target Details

---

Target:	TOPBP1
Alternative Name:	TOPBP1 ( <a href="#">TOPBP1 Products</a> )
Background:	This gene encodes a binding protein which interacts with the C-terminal region of topoisomerase II beta. This interaction suggests a supportive role for this protein in the catalytic reactions of topoisomerase II beta through transient breakages of DNA strands.,TOPBP1,TOP2BP1,Epigenetics & Nuclear Signaling,DNA Damage & Repair,Cancer,Drug resistance,Topoisomerases,TOPBP1
Molecular Weight:	170 kDa
Gene ID:	11073
UniProt:	<a href="#">Q92547</a>
Pathways:	<a href="#">Chromatin Binding</a>

## Application Details

---

Application Notes:	WB,1:500 - 1:2000
Restrictions:	For Research Use only

## Handling

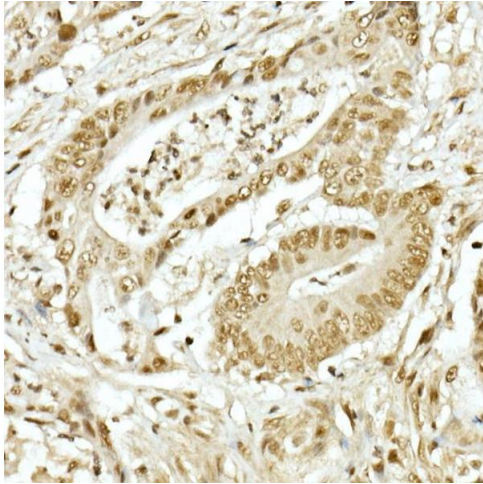
---

Format:	Liquid
Buffer:	PBS with 0.02 % sodium azide,50 % glycerol, pH 7.3.
Preservative:	Sodium azide
Precaution of Use:	This product contains Sodium azide: a POISONOUS AND HAZARDOUS SUBSTANCE which should be handled by trained staff only.
Storage:	-20 °C
Storage Comment:	Store at -20°C. Avoid freeze / thaw cycles.

## Publications

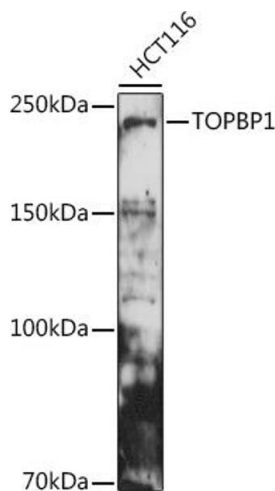
---

Product cited in:	Wang, Wang, Xin, Wang, Wang, Xu, Jia, Yue, Wang, Song: "Two novel LRR-only proteins in Chlamydia farreri: Similar in structure, yet different in expression profile and pattern recognition." in: <b>Developmental and comparative immunology</b> , Vol. 59, pp. 99-109, (2017) ( <a href="#">PubMed</a> ).
-------------------	-------------------------------------------------------------------------------------------------------------------------------------------------------------------------------------------------------------------------------------------------------------------------------------------------------------



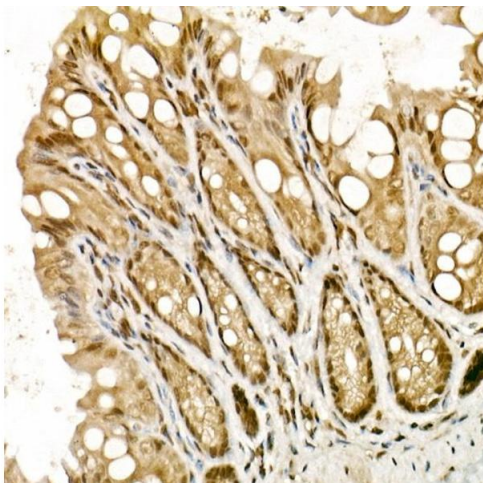
### Immunohistochemistry

**Image 1.** Immunohistochemistry of paraffin-embedded human colon carcinoma using TOPBP1 Rabbit pAb (ABIN6129493, ABIN6149398, ABIN6149401 and ABIN6221465) at dilution of 1:50 (40x lens). Perform high pressure antigen retrieval with 10 mM citrate buffer pH 6.0 before commencing with IHC staining protocol.



### Western Blotting

**Image 2.** Western blot analysis of extracts of HCT116 cells, using TOPBP1 antibody (ABIN6129493, ABIN6149398, ABIN6149401 and ABIN6221465) at 1:500 dilution. Secondary antibody: HRP Goat Anti-Rabbit IgG (H+L) (ABIN1684268 and ABIN3020597) at 1:10000 dilution. Lysates/proteins: 25 µg per lane. Blocking buffer: 3 % nonfat dry milk in TBST. Detection: ECL Basic Kit (RM00020). Exposure time: 90s.



### Immunohistochemistry

**Image 3.** Immunohistochemistry of paraffin-embedded mouse intestine using TOPBP1 Rabbit pAb (ABIN6129493, ABIN6149398, ABIN6149401 and ABIN6221465) at dilution of 1:50 (40x lens). Perform high pressure antigen retrieval with 10 mM citrate buffer pH 6.0 before commencing with IHC staining protocol.

Please check the [product details page](#) for more images. Overall 4 images are available for ABIN6149398.