



[Go to Product page](#)

Datasheet for ABIN6149454
anti-TPT1 antibody (AA 1-172)

1 Image

Overview

Quantity:	100 µL
Target:	TPT1
Binding Specificity:	AA 1-172
Reactivity:	Human
Host:	Rabbit
Clonality:	Polyclonal
Conjugate:	This TPT1 antibody is un-conjugated
Application:	Western Blotting (WB)

Product Details

Immunogen:	Recombinant fusion protein containing a sequence corresponding to amino acids 1-172 of human TCTP/TCTP/TPT1 (NP_003286.1).
Sequence:	MIIYRDLISH DEMFSDIYKI REIADGLCLE VEGKMVSRTE GNIDDSLIGG NASAEGPEGE GTESTVITGV DIVMNHHLQE TSFTKEAYKK YIKDYMKSIK GKLEEQRPER VKPFMTGAAE QIKHILANFK NYQFFIGENM NPDGMVALLD YREDGVTPYM IFFKDGLEME KC
Isotype:	IgG
Cross-Reactivity:	Human, Mouse, Rat
Characteristics:	Polyclonal Antibodies

Target Details

Target:	TPT1
---------	------

Target Details

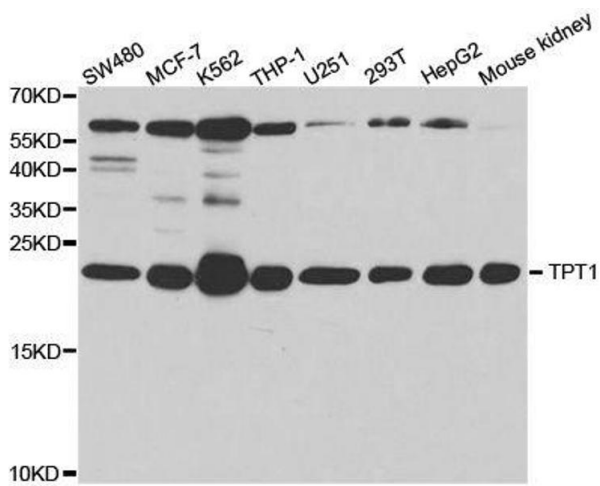
Alternative Name:	TPT1 (TPT1 Products)
Background:	Involved in calcium binding and microtubule stabilization.,TPT1,HRF,TCTP,p02,p23,Epigenetics & Nuclear Signaling,RNA Binding,Cell Biology & Developmental Biology,Apoptosis,Immunology & Inflammation,TPT1
Molecular Weight:	15 kDa/19 kDa
Gene ID:	7178
UniProt:	P13693
Pathways:	Response to Water Deprivation , Regulation of Cell Size , Negative Regulation of intrinsic apoptotic Signaling

Application Details

Application Notes:	WB,1:500 - 1:2000
Comment:	HIGH QUALITY
Restrictions:	For Research Use only

Handling

Format:	Liquid
Buffer:	PBS with 0.02 % sodium azide,50 % glycerol, pH 7.3.
Preservative:	Sodium azide
Precaution of Use:	This product contains Sodium azide: a POISONOUS AND HAZARDOUS SUBSTANCE which should be handled by trained staff only.
Storage:	-20 °C
Storage Comment:	Store at -20°C. Avoid freeze / thaw cycles.



Western Blotting

Image 1. Western blot analysis of extracts of various cell lines, using TPT1 antibody.