

Datasheet for ABIN6149474  
**anti-TRAPPC2 antibody (AA 1-140)**



[Go to Product page](#)

1 Image

## Overview

Quantity:	100 µL
Target:	TRAPPC2
Binding Specificity:	AA 1-140
Reactivity:	Human
Host:	Rabbit
Clonality:	Polyclonal
Conjugate:	This TRAPPC2 antibody is un-conjugated
Application:	Western Blotting (WB)

## Product Details

Immunogen:	Recombinant fusion protein containing a sequence corresponding to amino acids 1-140 of human TRAPPC2 (NP_055378.1).
Sequence:	MSGSFYFVIV GHHDNPVFEM EFLPAGKAES KDDHRHLNQF IAHAALDLVD ENMWLSNNMY LKTVDKFNFW FVSAFVTAGH MRFIMLHDIR QEDGIKNFFT DVYDLYIKFS MNPFYEPNSP IRSSAFDRKV QFLGKKHLLS
Isotype:	IgG
Cross-Reactivity:	Human, Mouse
Characteristics:	Polyclonal Antibodies

## Target Details

Target:	TRAPPC2
---------	---------

## Target Details

---

Alternative Name:	TRAPPC2 ( <a href="#">TRAPPC2 Products</a> )
Background:	<p>The protein encoded by this gene is thought to be part of a large multi-subunit complex involved in the targeting and fusion of endoplasmic reticulum-to-Golgi transport vesicles with their acceptor compartment. In addition, the encoded protein can bind c-myc promoter-binding protein 1 and block its transcriptional repression capability. Mutations in this gene are a cause of spondyloepiphyseal dysplasia tarda (SEDT). A processed pseudogene of this gene is located on chromosome 19, and other pseudogenes are found on chromosomes 8 and Y. Alternatively spliced transcript variants have been found for this gene.,TRAPPC2,MIP2A,SEDL,SEDT,TRAPPC2P1,TRS20,ZNF547L,hYP38334,Signal Transduction,TRAPPC2</p>
Molecular Weight:	14 kDa/16 kDa/20 kDa
Gene ID:	6399
UniProt:	<a href="#">P0DI81</a>

## Application Details

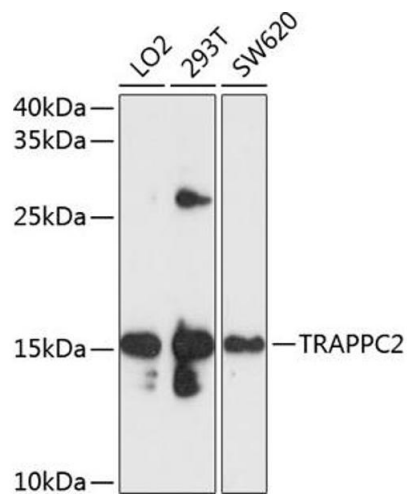
---

Application Notes:	WB,1:500 - 1:2000
Comment:	HIGH QUALITY
Restrictions:	For Research Use only

## Handling

---

Format:	Liquid
Buffer:	PBS with 0.02 % sodium azide,50 % glycerol, pH 7.3.
Preservative:	Sodium azide
Precaution of Use:	This product contains Sodium azide: a POISONOUS AND HAZARDOUS SUBSTANCE which should be handled by trained staff only.
Storage:	-20 °C
Storage Comment:	Store at -20°C. Avoid freeze / thaw cycles.



### Western Blotting

**Image 1.** Western blot analysis of extracts of various cell lines, using TR antibody at 1:1000 dilution. Secondary antibody: HRP Goat Anti-Rabbit IgG (H+L) (ABIN1684268 and ABIN3020597) at 1:10000 dilution. Lysates/proteins: 25 µg per lane. Blocking buffer: 3% nonfat dry milk in TBST. Detection: ECL Basic Kit (RM00020). Exposure time: 5s.