



[Go to Product page](#)

Datasheet for ABIN6149494
anti-TRIB1 antibody (AA 203-372)

1 Image

Overview

Quantity:	100 µL
Target:	TRIB1
Binding Specificity:	AA 203-372
Reactivity:	Human
Host:	Rabbit
Clonality:	Polyclonal
Conjugate:	This TRIB1 antibody is un-conjugated
Application:	Western Blotting (WB)

Product Details

Immunogen:	Recombinant fusion protein containing a sequence corresponding to amino acids 203-372 of human TRIB1 (NP_079471.1).
Sequence:	LGDLKLRKFV FSTEERTQLR LESLEDTHIM KGEDDALSDK HGCPAYVSPE ILNTTGTYSG KAADVWSLGV MLYTLLVGRY PFHSDPSAL FSKIRRGQFC IPEHISPKAR CLIRSLRRE PSERLTAPEI LLHPWFESVL EPGYIDSEIG TSDQIVPEYQ EDSDISSFFC
Isotype:	IgG
Cross-Reactivity:	Human
Characteristics:	Polyclonal Antibodies

Target Details

Target:	TRIB1
---------	-------

Target Details

Alternative Name: [TRIB1 \(TRIB1 Products\)](#)

Background: Adapter protein involved in protein degradation by interacting with COP1 ubiquitin ligase. The COP1-binding motif is masked by autoinhibitory interactions with the protein kinase domain. Serves to alter COP1 substrate specificity by directing the activity of COP1 toward CEBPA. Binds selectively the recognition sequence of CEBPA. Regulates myeloid cell differentiation by altering the expression of CEBPA in a COP1-dependent manner (By similarity. Controls macrophage, eosinophil and neutrophil differentiation via the COP1-binding domain (By similarity. Interacts with MAPK kinases and regulates activation of MAP kinases, but has no kinase activity.,TRIB1,C8FW,GIG-2,GIG2,SKIP1,TRB-1,TRB1,Signal Transduction,Kinase,Endocrine & Metabolism,Stem Cells,Hematopoietic Progenitors,Cardiovascular,TRIB1

Molecular Weight: 23 kDa/41 kDa

Gene ID: 10221

UniProt: [Q96RU8](#)

Pathways: [Smooth Muscle Cell Migration](#)

Application Details

Application Notes: WB,1:1000 - 1:4000

Comment: HIGH QUALITY

Restrictions: For Research Use only

Handling

Format: Liquid

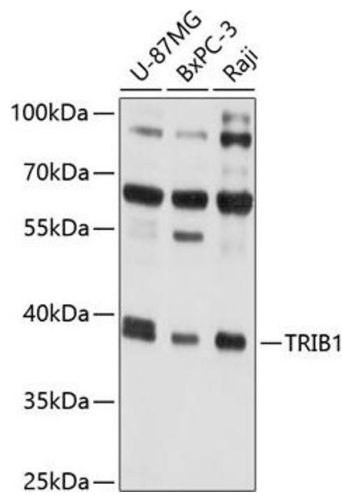
Buffer: PBS with 0.02 % sodium azide,50 % glycerol, pH 7.3.

Preservative: Sodium azide

Precaution of Use: This product contains Sodium azide: a POISONOUS AND HAZARDOUS SUBSTANCE which should be handled by trained staff only.

Storage: -20 °C

Storage Comment: Store at -20°C. Avoid freeze / thaw cycles.



Western Blotting

Image 1. Western blot analysis of extracts of various cell lines, using TRIB1 antibody (ABIN6129151, ABIN6149494, ABIN6149495 and ABIN6214276) at 1:1000 dilution. Secondary antibody: HRP Goat Anti-Rabbit IgG (H+L) (ABIN1684268 and ABIN3020597) at 1:10000 dilution. Lysates/proteins: 25 µg per lane. Blocking buffer: 3 % nonfat dry milk in TBST. Detection: ECL Basic Kit (RM00020). Exposure time: 5s.