



[Go to Product page](#)

Datasheet for ABIN6149568  
**anti-TRPC1 antibody (AA 400-500)**

1 Image

Overview

Quantity:	100 µL
Target:	TRPC1
Binding Specificity:	AA 400-500
Reactivity:	Human
Host:	Rabbit
Clonality:	Polyclonal
Conjugate:	This TRPC1 antibody is un-conjugated
Application:	Western Blotting (WB), Immunohistochemistry (IHC)

Product Details

Immunogen:	A synthetic peptide corresponding to a sequence within amino acids 400-500 of human TRPC1 (NP_001238774.1).
Sequence:	LLNLYSLVYN EDKKNTMGPA LERIDYLLIL WIIGMIWSDI KRLWYEGLED FLEESRNQLS FVMNSLYLAT FALKVVAHNK FHDFADRKDW DAFHPTLVAE G
Isotype:	IgG
Cross-Reactivity:	Human, Mouse
Characteristics:	Polyclonal Antibodies

Target Details

Target:	TRPC1
---------	-------

## Target Details

---

Alternative Name:	TRPC1 ( <a href="#">TRPC1 Products</a> )
Background:	The protein encoded by this gene is a membrane protein that can form a non-selective channel permeable to calcium and other cations. The encoded protein appears to be induced to form channels by a receptor tyrosine kinase-activated phosphatidylinositol second messenger system and also by depletion of intracellular calcium stores. Two transcript variants encoding different isoforms have been found for this gene.,TRPC1,HTRP-1,TRP1,Signal Transduction,Neuroscience,Calcium Signaling,Cardiovascular,Heart,Hypertrophy,TRPC1
Molecular Weight:	87 kDa/91 kDa
Gene ID:	7220
UniProt:	<a href="#">P48995</a>

## Application Details

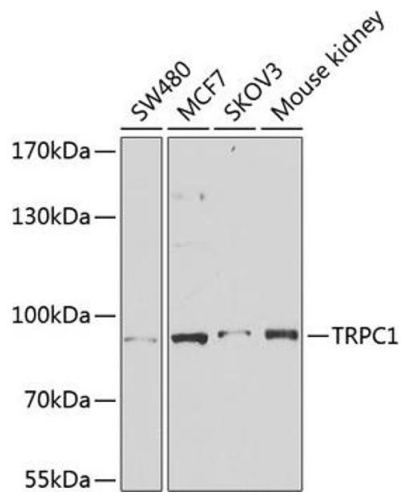
---

Application Notes:	WB,1:500 - 1:2000,IHC,1:50 - 1:200
Comment:	HIGH QUALITY
Restrictions:	For Research Use only

## Handling

---

Format:	Liquid
Buffer:	PBS with 0.02 % sodium azide,50 % glycerol, pH 7.3.
Preservative:	Sodium azide
Precaution of Use:	This product contains Sodium azide: a POISONOUS AND HAZARDOUS SUBSTANCE which should be handled by trained staff only.
Storage:	-20 °C
Storage Comment:	Store at -20°C. Avoid freeze / thaw cycles.



### Western Blotting

**Image 1.** Western blot analysis of extracts of various cell lines, using TRPC1 antibody (ABIN6133942, ABIN6149568, ABIN6149571 and ABIN6216183) at 1:1000 dilution. Secondary antibody: HRP Goat Anti-Rabbit IgG (H+L) (ABIN1684268 and ABIN3020597) at 1:10000 dilution. Lysates/proteins: 25 µg per lane. Blocking buffer: 3 % nonfat dry milk in TBST. Detection: ECL Basic Kit (RM00020). Exposure time: 1s.