



[Go to Product page](#)

Datasheet for ABIN6149580
anti-TRPC6 antibody (AA 500-600)

4 Images

Overview

Quantity:	100 µL
Target:	TRPC6
Binding Specificity:	AA 500-600
Reactivity:	Human
Host:	Rabbit
Clonality:	Polyclonal
Conjugate:	This TRPC6 antibody is un-conjugated
Application:	Western Blotting (WB), Immunohistochemistry (IHC)

Product Details

Immunogen:	A synthetic peptide corresponding to a sequence within amino acids 500-600 of human TRPC6 (NP_004612.2).
Sequence:	SWVIGMIWAE CKEIWTQGPK EYLFELWNML DFGMLAIFAA SFIARFMAFW HASKAQSIIID ANDTLKDLTK VTLGDNVKYY NLARIKWDPS DPQIISEGLY A
Isotype:	IgG
Cross-Reactivity:	Human, Mouse, Rat
Characteristics:	Polyclonal Antibodies

Target Details

Target:	TRPC6
---------	-------

Target Details

Alternative Name: TRPC6 ([TRPC6 Products](#))

Background: The protein encoded by this gene forms a receptor-activated calcium channel in the cell membrane. The channel is activated by diacylglycerol and is thought to be under the control of a phosphatidylinositol second messenger system. Activation of this channel occurs independently of protein kinase C and is not triggered by low levels of intracellular calcium. Defects in this gene are a cause of focal segmental glomerulosclerosis 2 (FSGS2), TRPC6, FSGS2, TRP6, Signal Transduction, Neuroscience, Calcium Signaling, TRPC6

Molecular Weight: 93 kDa/100 kDa/106 kDa

Gene ID: 7225

UniProt: [Q9Y210](#)

Application Details

Application Notes: WB, 1:500 - 1:2000, IHC, 1:50 - 1:200

Comment: HIGH QUALITY

Restrictions: For Research Use only

Handling

Format: Liquid

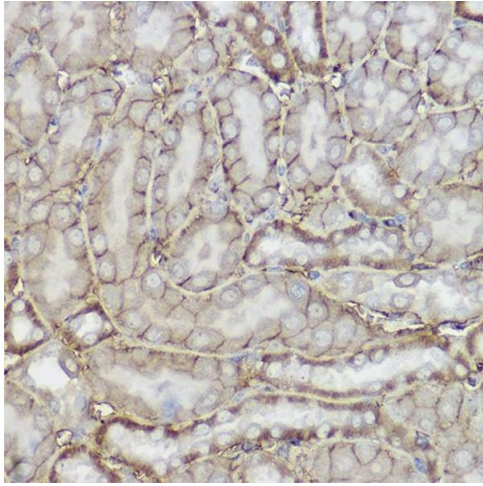
Buffer: PBS with 0.02 % sodium azide, 50 % glycerol, pH 7.3.

Preservative: Sodium azide

Precaution of Use: This product contains Sodium azide: a POISONOUS AND HAZARDOUS SUBSTANCE which should be handled by trained staff only.

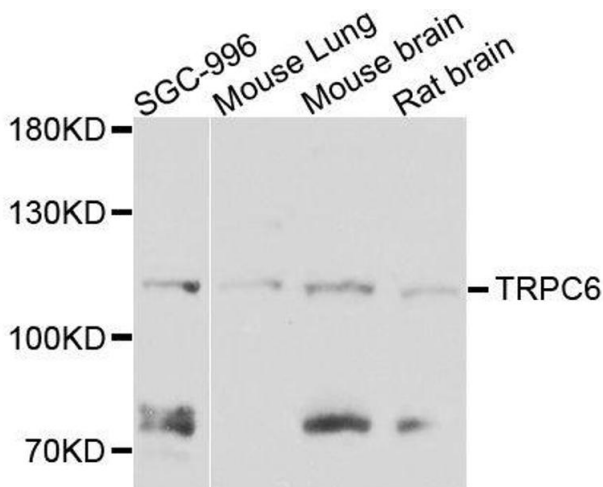
Storage: -20 °C

Storage Comment: Store at -20°C. Avoid freeze / thaw cycles.



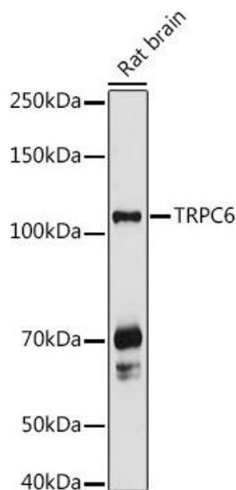
Immunohistochemistry

Image 1. Immunohistochemistry of paraffin-embedded mouse kidney using TRPC6 Rabbit pAb (ABIN6133946, ABIN6149580, ABIN6149581 and ABIN6224178) at dilution of 1:150 (40x lens). Perform high pressure antigen retrieval with 10 mM citrate buffer pH 6.0 before commencing with IHC staining protocol.



Western Blotting

Image 2. Western blot analysis of extracts of various cell lines, using TRPC6 antibody.



Western Blotting

Image 3. Western blot analysis of extracts of Rat brain, using TRPC6 antibody (ABIN6133946, ABIN6149580, ABIN6149581 and ABIN6224178) at 1:1000 dilution. Secondary antibody: HRP Goat Anti-Rabbit IgG (H+L) (ABIN1684268 and ABIN3020597) at 1:10000 dilution. Lysates/proteins: 25 µg per lane. Blocking buffer: 3 % nonfat dry milk in TBST. Detection: ECL Basic Kit (RM00020). Exposure time: 10s.

Please check the [product details page](#) for more images. Overall 4 images are available for ABIN6149580.