

Datasheet for ABIN6149591  
**anti-TRPM8 antibody (AA 980-1104)**



[Go to Product page](#)

1 Image

## Overview

Quantity:	100 µL
Target:	TRPM8
Binding Specificity:	AA 980-1104
Reactivity:	Human
Host:	Rabbit
Clonality:	Polyclonal
Conjugate:	This TRPM8 antibody is un-conjugated
Application:	Western Blotting (WB)

## Product Details

Immunogen:	Recombinant fusion protein containing a sequence corresponding to amino acids 980-1104 of human TRPM8 (NP_076985.4).
Sequence:	GYTVGTVQEN NDQVWKFQRY FLVQEYCSRL NIPFPFIVFA YFYMVVKKCF KCCCKEKNME SSVCCFKNED NETLAWEGVM KENYLVKINT KANDTSEEMR HRFRQLDTKL NDLKGLLKEI ANKIK
Isotype:	IgG
Cross-Reactivity:	Human
Characteristics:	Polyclonal Antibodies

## Target Details

Target:	TRPM8
---------	-------

## Target Details

Alternative Name:	TRPM8 ( <a href="#">TRPM8 Products</a> )
Background:	Receptor-activated non-selective cation channel involved in detection of sensations such as coolness, by being activated by cold temperature below 25 degrees Celsius. Activated by icilin, eucalyptol, menthol, cold and modulation of intracellular pH . Involved in menthol sensation. Permeable for monovalent cations sodium, potassium, and cesium and divalent cation calcium. Temperature sensing is tightly linked to voltage-dependent gating. Activated upon depolarization, changes in temperature resulting in graded shifts of its voltage-dependent activation curves. The chemical agonist menthol functions as a gating modifier, shifting activation curves towards physiological membrane potentials. Temperature sensitivity arises from a tenfold difference in the activation energies associated with voltage-dependent opening and closing. In prostate cancer cells, shows strong inward rectification and high calcium selectivity in contrast to its behavior in normal cells which is characterized by outward rectification and poor cationic selectivity. Plays a role in prostate cancer cell migration. Isoform 2 and isoform 3 negatively regulate menthol- and cold-induced channel activity by stabilizing the closed state of the channel.,TRPM8,LTRPC6,TRPP8,Cancer,Signal Transduction,Endocrine & Metabolism,Neuroscience,TRPM8
Molecular Weight:	5 kDa/18 kDa/79 kDa/127 kDa
Gene ID:	79054
UniProt:	<a href="#">Q7Z2W7</a>

## Application Details

Application Notes:	WB,1:500 - 1:2000
Comment:	HIGH QUALITY
Restrictions:	For Research Use only

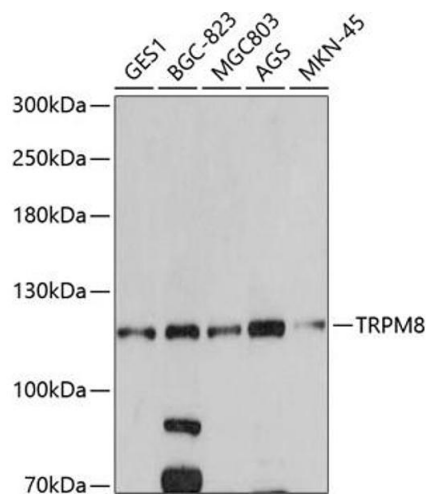
## Handling

Format:	Liquid
Buffer:	PBS with 0.02 % sodium azide,50 % glycerol, pH 7.3.
Preservative:	Sodium azide
Precaution of Use:	This product contains Sodium azide: a POISONOUS AND HAZARDOUS SUBSTANCE which should be handled by trained staff only.

Handling

Storage:	-20 °C
Storage Comment:	Store at -20°C. Avoid freeze / thaw cycles.

Images



Western Blotting

**Image 1.** Western blot analysis of extracts of various cell lines, using TRPM8 antibody (ABIN6128839, ABIN6149591, ABIN6149593 and ABIN6220964) at 1:500 dilution. Secondary antibody: HRP Goat Anti-Rabbit IgG (H+L) (ABIN1684268 and ABIN3020597) at 1:10000 dilution. Lysates/proteins: 25 µg per lane. Blocking buffer: 3 % nonfat dry milk in TBST. Detection: ECL Basic Kit (RM00020). Exposure time: 60s.