



[Go to Product page](#)

Datasheet for ABIN6149634  
**anti-TSPAN33 antibody (C-Term)**

1 Image

### Overview

Quantity:	100 µL
Target:	TSPAN33
Binding Specificity:	C-Term
Reactivity:	Human
Host:	Rabbit
Clonality:	Polyclonal
Conjugate:	This TSPAN33 antibody is un-conjugated
Application:	Western Blotting (WB), Immunohistochemistry (IHC)

### Product Details

Immunogen:	A synthetic peptide corresponding to a sequence within amino acids 200 to the C-terminus of human TSPAN33 (NP_848657.1).
Sequence:	NTMCGQGMQA FDYLEASKVI YTNGCIDKLV NWIHSNLFLL GGVALGLAIP QLVGILLSQI LVNQIKDQIK LQLYNQQHRA DPWY
Isotype:	IgG
Cross-Reactivity:	Human, Mouse, Rat
Characteristics:	Polyclonal Antibodies

### Target Details

Target:	TSPAN33
---------	---------

## Target Details

---

Alternative Name:	TSPAN33 ( <a href="#">TSPAN33 Products</a> )
Background:	Plays an important role in normal erythropoiesis (By similarity. It has a role in the differentiation of erythroid progenitors (By similarity. Regulates maturation and trafficking of the transmembrane metalloprotease ADAM10. Negatively regulates ligand-induced Notch activity probably by regulating ADAM10 activity. Mediates docking of ADAM10 to zonula adherens by interacting with ADAM10 and, in a PDZD11-dependent manner, with the zonula adherens protein PLEKHA7.,TSPAN33,PEN,PEN.,TSPAN-33,Cell Biology & Developmental Biology,TSPAN33
Molecular Weight:	31 kDa
Gene ID:	340348
UniProt:	<a href="#">Q86UF1</a>

## Application Details

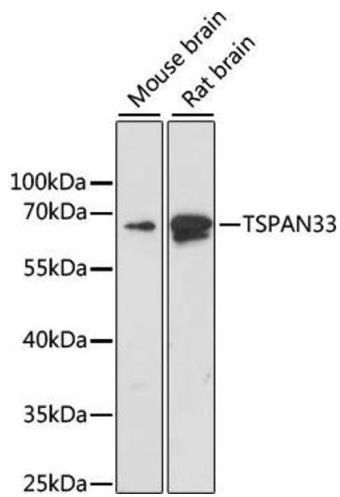
---

Application Notes:	WB,1:200 - 1:1000,IHC,1:50 - 1:200
Restrictions:	For Research Use only

## Handling

---

Format:	Liquid
Buffer:	PBS with 0.02 % sodium azide,50 % glycerol, pH 7.3.
Preservative:	Sodium azide
Precaution of Use:	This product contains Sodium azide: a POISONOUS AND HAZARDOUS SUBSTANCE which should be handled by trained staff only.
Storage:	-20 °C
Storage Comment:	Store at -20°C. Avoid freeze / thaw cycles.



### Western Blotting

**Image 1.** Western blot analysis of extracts of various cell lines, using TSP antibody (ABIN6129687, ABIN6149634, ABIN6220872 and ABIN6220873) at 1:1000 dilution. Secondary antibody: HRP Goat Anti-Rabbit IgG (H+L) (ABIN1684268 and ABIN3020597) at 1:10000 dilution. Lysates/proteins: 25  $\mu$ g per lane. Blocking buffer: 3% nonfat dry milk in TBST. Detection: ECL Basic Kit (RM00020). Exposure time: 90s.