

Datasheet for ABIN6149690
anti-Tubulin, beta 8 antibody



[Go to Product page](#)

4 Images

Overview

Quantity:	100 µL
Target:	Tubulin, beta 8 (TUBB8)
Reactivity:	Human
Host:	Rabbit
Clonality:	Polyclonal
Conjugate:	This Tubulin, beta 8 antibody is un-conjugated
Application:	Western Blotting (WB), Immunofluorescence (IF)

Product Details

Immunogen:	A synthetic peptide of human TUBB8
Isotype:	IgG
Cross-Reactivity:	Human
Characteristics:	Polyclonal Antibodies

Target Details

Target:	Tubulin, beta 8 (TUBB8)
Alternative Name:	TUBB8 (TUBB8 Products)
Background:	The protein encoded by this gene represents the primary beta-tubulin subunit of oocytes and the early embryo. Defects in this gene, which is primate-specific, are a cause of oocyte maturation defect 2 and infertility.,TUBB8,OOMD,OOMD2,bA631M21.2,Signal Transduction,Cell Biology & Developmental Biology,Cell Cycle,Centrosome,Cytoskeleton,Microtubules,TUBB8

Target Details

Molecular Weight: 49 kDa

Gene ID: 347688

UniProt: [Q3ZCM7](#)

Application Details

Application Notes: WB,1:500 - 1:2000,IF,1:50 - 1:200

Comment: HIGH QUALITY

Restrictions: For Research Use only

Handling

Format: Liquid

Buffer: PBS with 0.02 % sodium azide,50 % glycerol, pH 7.3.

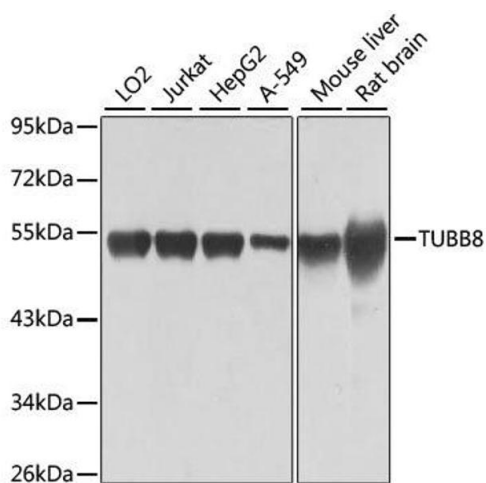
Preservative: Sodium azide

Precaution of Use: This product contains Sodium azide: a POISONOUS AND HAZARDOUS SUBSTANCE which should be handled by trained staff only.

Storage: -20 °C

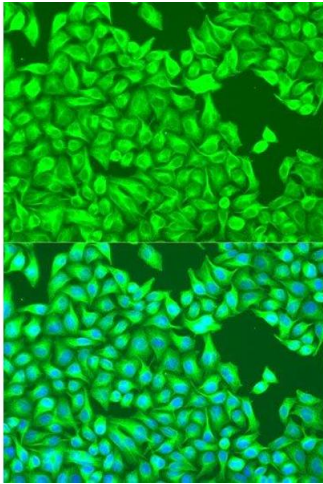
Storage Comment: Store at -20°C. Avoid freeze / thaw cycles.

Images



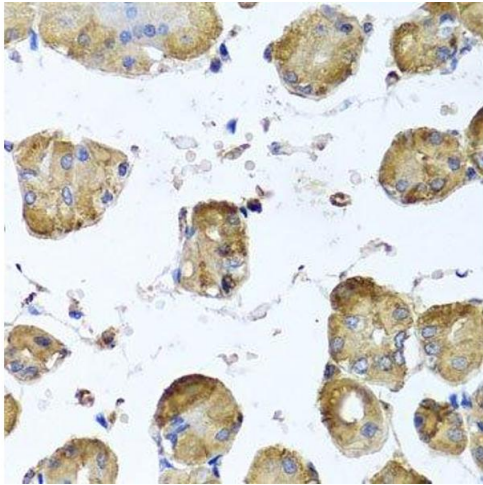
Western Blotting

Image 1. Western blot analysis of extracts of various cell lines, using TUBB8 antibody.



Immunofluorescence

Image 2. Immunofluorescence analysis of U2OS cells using TUBB8 antibody.



Immunohistochemistry (Paraffin-embedded Sections)

Image 3. Immunohistochemistry of paraffin-embedded human stomach using TUBB8 antibody.

Please check the [product details page](#) for more images. Overall 4 images are available for ABIN6149690.