



[Go to Product page](#)

Datasheet for ABIN6149713
anti-TWIST1 antibody (AA 1-100)

4 Images

Overview

Quantity:	100 µL
Target:	TWIST1
Binding Specificity:	AA 1-100
Reactivity:	Human
Host:	Rabbit
Clonality:	Polyclonal
Conjugate:	This TWIST1 antibody is un-conjugated
Application:	Western Blotting (WB), Immunohistochemistry (IHC)

Product Details

Immunogen:	A synthetic peptide corresponding to a sequence within amino acids 1-100 of human Twist (NP_000465.1).
Sequence:	MMQDVSSSPV SPADDSLNS EEPDRQPP SGKRGGRKRR SSRRSAGGGA GPGGAAGGGV GGGDEPGSPA QGKRGKKSAG CGGGGGAGGG GGSSSGGGSP
Isotype:	IgG
Cross-Reactivity:	Human, Mouse, Rat
Characteristics:	Polyclonal Antibodies

Target Details

Target:	TWIST1
---------	--------

Target Details

Alternative Name: [TWIST1 \(TWIST1 Products\)](#)

Background: Basic helix-loop-helix (bHLH) transcription factors have been implicated in cell lineage determination and differentiation. The protein encoded by this gene is a bHLH transcription factor and shares similarity with another bHLH transcription factor, Dermo1. The strongest expression of this mRNA is in placental tissue, in adults, mesodermally derived tissues express this mRNA preferentially. Mutations in this gene have been found in patients with Saethre-Chotzen syndrome.,TWIST1,ACS3,BPES2,BPES3,CRS,CRS1,CSO,SCS,TWIST,bHLHa38,Epigenetics & Nuclear Signaling,Transcription Factors,Cancer,Cell Biology & Developmental Biology,Neuroscience,Cell Type Marker,Stem Cells,Cardiovascular,Heart,Cardiogenesis,Neuron marker,TWIST1

Molecular Weight: 21 kDa

Gene ID: 7291

UniProt: [Q15672](#)

Pathways: [p53 Signaling](#), [Proton Transport](#), [Tube Formation](#), [Negative Regulation of Transporter Activity](#)

Application Details

Application Notes: WB,1:500 - 1:2000,IHC,1:50 - 1:200

Restrictions: For Research Use only

Handling

Format: Liquid

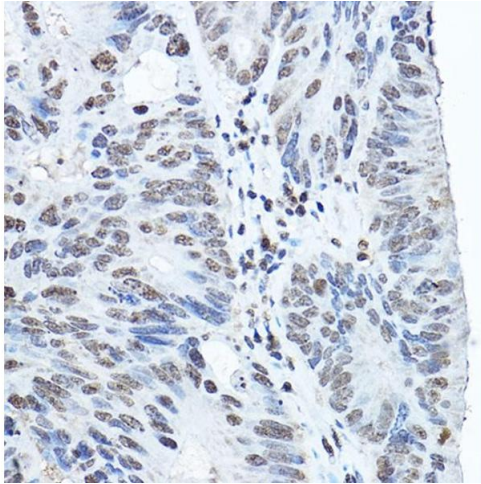
Buffer: PBS with 0.02 % sodium azide,50 % glycerol, pH 7.3.

Preservative: Sodium azide

Precaution of Use: This product contains Sodium azide: a POISONOUS AND HAZARDOUS SUBSTANCE which should be handled by trained staff only.

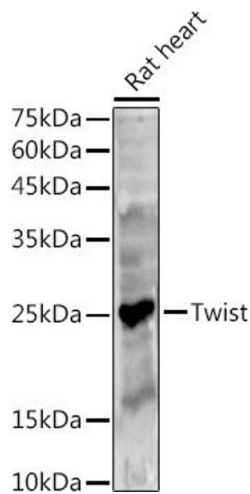
Storage: -20 °C

Storage Comment: Store at -20°C. Avoid freeze / thaw cycles.



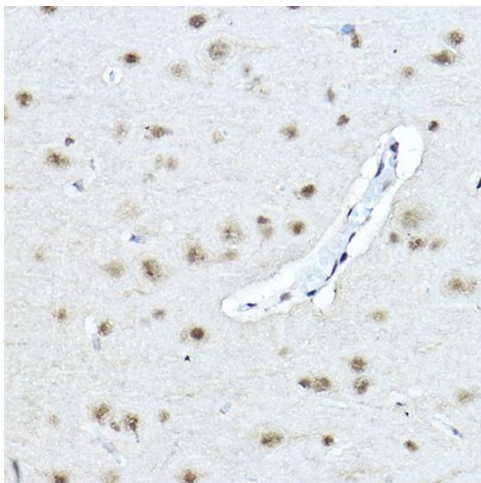
Immunohistochemistry

Image 1. Immunohistochemistry of paraffin-embedded human colon carcinoma using Twist Rabbit pAb (ABIN6133951, ABIN6149713, ABIN6149716 and ABIN6220170) at dilution of 1:200 (40x lens). Perform high pressure antigen retrieval with 10 mM citrate buffer pH 6.0 before commencing with IHC staining protocol.



Western Blotting

Image 2. Western blot analysis of extracts of Rat heart, using Twist antibody (ABIN6133951, ABIN6149713, ABIN6149716 and ABIN6220170) at 1:500 dilution. Secondary antibody: HRP Goat Anti-Rabbit IgG (H+L) (ABIN1684268 and ABIN3020597) at 1:10000 dilution. Lysates/proteins: 25 µg per lane. Blocking buffer: 3 % nonfat dry milk in TBST. Detection: ECL Basic Kit (RM00020). Exposure time: 90s.



Immunohistochemistry

Image 3. Immunohistochemistry of paraffin-embedded rat brain using Twist Rabbit pAb (ABIN6133951, ABIN6149713, ABIN6149716 and ABIN6220170) at dilution of 1:200 (40x lens). Perform high pressure antigen retrieval with 10 mM citrate buffer pH 6.0 before commencing with IHC staining protocol.

Please check the [product details page](#) for more images. Overall 4 images are available for ABIN6149713.