

Datasheet for ABIN6149794
anti-UBE2F antibody (AA 1-185)



[Go to Product page](#)

5 Images

Overview

Quantity:	100 µL
Target:	UBE2F
Binding Specificity:	AA 1-185
Reactivity:	Human
Host:	Rabbit
Clonality:	Polyclonal
Conjugate:	This UBE2F antibody is un-conjugated
Application:	Western Blotting (WB), Immunohistochemistry (IHC), Immunofluorescence (IF)

Product Details

Immunogen:	Recombinant fusion protein containing a sequence corresponding to amino acids 1-185 of human UBE2F (NP_542409.1).
Sequence:	MLTLASKLKR DDGLKGSRTA ATASDSTRRV SVRDKLLVKE VAELEANLPC TCKVHFDPN KLHCFQLTVT PDEGYQGGK FQFETEVPA YNMVPPKVKC LTKIWHPNIT ETGEICLSLL REHSIDGTGW APTRTLKDVV WGLNSLFTDL LNFDDPLNIE AAEHHLRDKE DFRNKVDDYI KRYAR
Isotype:	IgG
Cross-Reactivity:	Human, Mouse, Rat
Characteristics:	Polyclonal Antibodies

Target Details

Target:	UBE2F
---------	-------

Target Details

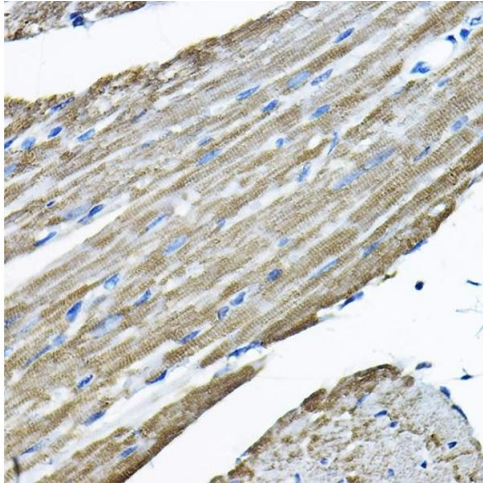
Alternative Name:	UBE2F (UBE2F Products)
Background:	Ube2F is an E2 enzyme, which is part of the E1, E2, and E3 cascade responsible for conjugation of Nedd8 to protein substrates. Neddylation is initiated by activating Nedd8 by the Nedd8 activating enzyme APPBP1/UBA3. Cullin is a well-known substrate for Neddylation. When NEDD8 is covalently bonded to the CRL, it stimulates its E3 Ub ligase activity. A new approach to cancer therapy involves hindering the Nedd8 conjugation pathway through inhibition of the NAE1/UBA3 enzyme.,UBE2F,NCE2,Epigenetics & Nuclear Signaling,Cell Biology & Developmental Biology,Ubiquitin,Ubiquitin-Proteasome Signaling Pathway,UBE2F
Molecular Weight:	11 kDa/13 kDa/17 kDa/18 kDa/21 kDa/23 kDa
Gene ID:	140739
UniProt:	Q969M7

Application Details

Application Notes:	WB,1:500 - 1:2000,IHC,1:50 - 1:200,IF,1:50 - 1:200
Comment:	HIGH QUALITY
Restrictions:	For Research Use only

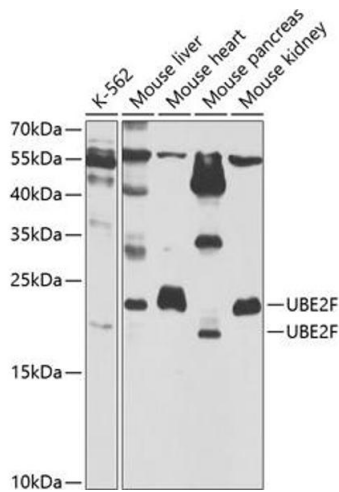
Handling

Format:	Liquid
Buffer:	PBS with 0.02 % sodium azide,50 % glycerol, pH 7.3.
Preservative:	Sodium azide
Precaution of Use:	This product contains Sodium azide: a POISONOUS AND HAZARDOUS SUBSTANCE which should be handled by trained staff only.
Storage:	-20 °C
Storage Comment:	Store at -20°C. Avoid freeze / thaw cycles.



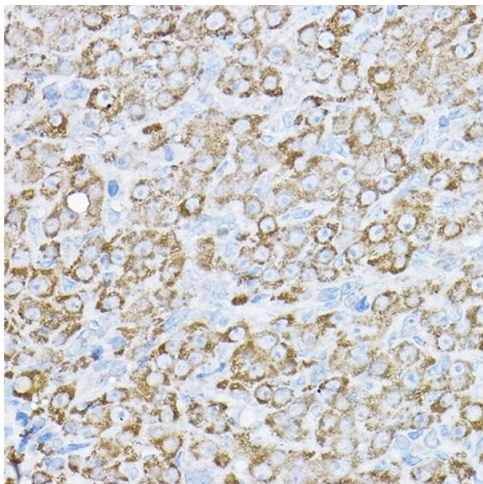
Immunohistochemistry

Image 1. Immunohistochemistry of paraffin-embedded mouse heart using UBE2F Rabbit pAb at dilution of 1:200 (40x lens). Perform high pressure antigen retrieval with 10 mM citrate buffer pH 6.0 before commencing with IHC staining protocol.



Western Blotting

Image 2. Western blot analysis of extracts of various cell lines, using UBE2F antibody at 1:1000 dilution. Secondary antibody: HRP Goat Anti-Rabbit IgG (H+L) (ABIN1684268 and ABIN3020597) at 1:10000 dilution. Lysates/proteins: 25 µg per lane. Blocking buffer: 3% nonfat dry milk in TBST. Detection: ECL Basic Kit (RM00020). Exposure time: 90s.



Immunohistochemistry

Image 3. Immunohistochemistry of paraffin-embedded rat ovary using UBE2F Rabbit pAb at dilution of 1:200 (40x lens). Perform high pressure antigen retrieval with 10 mM citrate buffer pH 6.0 before commencing with IHC staining protocol.

Please check the [product details page](#) for more images. Overall 5 images are available for ABIN6149794.