



Datasheet for ABIN6149815  
**anti-UBE2NL antibody (AA 1-100)**



[Go to Product page](#)

1 Image

Overview

Quantity:	100 µL
Target:	UBE2NL
Binding Specificity:	AA 1-100
Reactivity:	Human
Host:	Rabbit
Clonality:	Polyclonal
Conjugate:	This UBE2NL antibody is un-conjugated
Application:	Western Blotting (WB)

Product Details

Immunogen:	Recombinant fusion protein containing a sequence corresponding to amino acids 1-100 of human UBE2NL (NP_001013007.1).
Sequence:	MAELPHRIIK ETQRLLAEPV PGIKAEPDES NARYFHVVIA GESKDSPFEG GTFKRELLLA EEYPMAAPKV RFMTKIYHPN VDKLERISLD ILKDKWSPAL
Isotype:	IgG
Cross-Reactivity:	Human, Mouse
Characteristics:	Polyclonal Antibodies

Target Details

Target:	UBE2NL
---------	--------

## Target Details

---

Alternative Name: [UBE2NL \(UBE2NL Products\)](#)

---

Background: This gene is intronless and encodes a member of the ubiquitin-conjugating enzyme family. The protein product is 91 % identical to ubiquitin-conjugating enzyme E2N, a multi-exon gene product. This locus represents a polymorphic pseudogene, where some individuals contain an allele that can encode a full-length protein, while others have a non-functional allele containing a premature stop codon (reference SNP rs237520) that truncates the coding sequence. [provided by RefSeq, Jun 2014],UBE2NL,Li174,Epigenetics & Nuclear Signaling,Cell Biology & Developmental Biology,Ubiquitin,Ubiquitin-Proteasome Signaling Pathway,UBE2NL

---

Molecular Weight: 17 kDa

---

Gene ID: 389898

---

UniProt: [Q5JXB2](#)

---

## Application Details

---

Application Notes: WB,1:500 - 1:2000

---

Comment: HIGH QUALITY

---

Restrictions: For Research Use only

---

## Handling

---

Format: Liquid

---

Buffer: PBS with 0.02 % sodium azide,50 % glycerol, pH 7.3.

---

Preservative: Sodium azide

---

Precaution of Use: This product contains Sodium azide: a POISONOUS AND HAZARDOUS SUBSTANCE which should be handled by trained staff only.

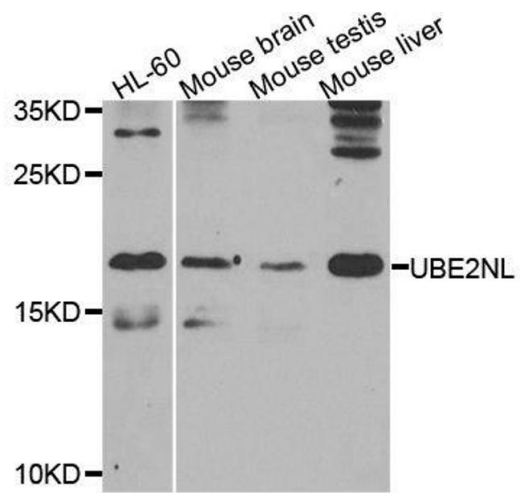
---

Storage: -20 °C

---

Storage Comment: Store at -20°C. Avoid freeze / thaw cycles.

---



### Western Blotting

**Image 1.** Western blot analysis of extracts of various cell lines, using UBE2NL antibody.