



[Go to Product page](#)

Datasheet for ABIN6149817
anti-UBE20 antibody (AA 1073-1292)

4 Images

Overview

Quantity:	100 µL
Target:	UBE20
Binding Specificity:	AA 1073-1292
Reactivity:	Human
Host:	Rabbit
Clonality:	Polyclonal
Conjugate:	This UBE20 antibody is un-conjugated
Application:	Western Blotting (WB), Immunoprecipitation (IP), Immunofluorescence (IF)

Product Details

Immunogen:	Recombinant fusion protein containing a sequence corresponding to amino acids 1073-1292 of human UBE20 (NP_071349.3).
Sequence:	LVNEPYNEA GFDSRGLQE GYENSRCYNE MALIRVVQSM TQLVRRPPEV FEQEIRQHFS TGGWRLVNRI ESWLETHALL EKAQALPNGV PKASSSPEPP AVAELSDSGQ QEPEDGGPAP GEASQGS DSE GGAQGLASAS RDHTDQTSET APDASVPPSV KPKKRRRSYR SFLPEKSGYP DIGFPLFPLS KGFIKSIRGV LTQFRAALLE AGMPECTEDK
Isotype:	IgG
Cross-Reactivity:	Human, Mouse, Rat
Characteristics:	Polyclonal Antibodies

Target Details

Target:	UBE2O
Alternative Name:	UBE2O (UBE2O Products)
Background:	<p>E2/E3 hybrid ubiquitin-protein ligase that displays both E2 and E3 ligase activities and mediates monoubiquitination of target proteins. Negatively regulates TRAF6-mediated NF-kappa-B activation independently of its E2 activity. Acts as a positive regulator of BMP7 signaling by mediating monoubiquitination of SMAD6, thereby regulating adipogenesis. Mediates monoubiquitination at different sites of the nuclear localization signal (NLS of BAP1, leading to cytoplasmic retention of BAP1. Also able to monoubiquitinate the NLS of other chromatin-associated proteins, such as INO80 and CXXC1, affecting their subcellular location. Acts as a regulator of retrograde transport by assisting the TRIM27:MAGEL2 E3 ubiquitin ligase complex to mediate 'Lys-63'-linked ubiquitination of WASHC1, leading to promote endosomal F-actin assembly.,UBE2O,E2-230K,Cell Biology & Developmental Biology,Ubiquitin,Ubiquitin-Proteasome Signaling Pathway,UBE2O</p>

Molecular Weight: 141 kDa

Gene ID: 63893

UniProt: [Q9C0C9](#)

Application Details

Application Notes: WB,1:1000 - 1:4000,IF,1:50 - 1:200,IP,1:50 - 1:200

Comment: HIGH QUALITY

Restrictions: For Research Use only

Handling

Format: Liquid

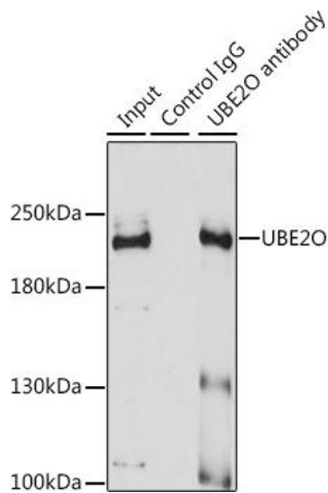
Buffer: PBS with 0.02 % sodium azide,50 % glycerol, pH 7.3.

Preservative: Sodium azide

Precaution of Use: This product contains Sodium azide: a POISONOUS AND HAZARDOUS SUBSTANCE which should be handled by trained staff only.

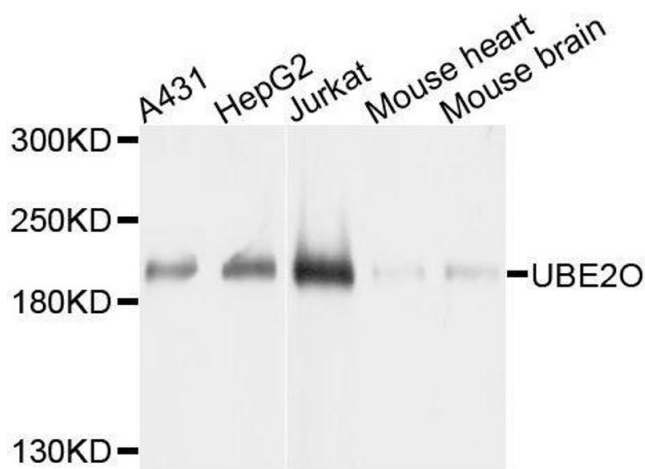
Storage: -20 °C

Storage Comment: Store at -20°C. Avoid freeze / thaw cycles.



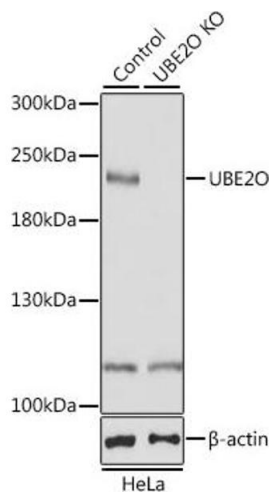
Immunoprecipitation

Image 1. Immunoprecipitation analysis of 200 µg extracts of A-431 cells using 3 µg UBE20 antibody (ABIN6130342, ABIN6149817, ABIN6149818 and ABIN7101351). Western blot was performed from the immunoprecipitate using UBE20 antibody (ABIN6130342, ABIN6149817, ABIN6149818 and ABIN7101351) at a dilution of 1:1000.



Western Blotting

Image 2. Western blot analysis of extracts of various cell lines, using UBE20 antibody.



Western Blotting

Image 3. Western blot analysis of extracts from normal (control) and UBE20 knockout (KO) HeLa cells, using UBE20 antibody (ABIN6130342, ABIN6149817, ABIN6149818 and ABIN7101351) at 1:1000 dilution. Secondary antibody: HRP Goat Anti-Rabbit IgG (H+L) (ABIN1684268 and ABIN3020597) at 1:10000 dilution. Lysates/proteins: 25 µg per lane. Blocking buffer: 3 % nonfat dry milk in TBST. Detection: ECL Basic Kit (RM00020). Exposure time: 5s.

Please check the [product details page](#) for more images. Overall 4 images are available for ABIN6149817.