



[Go to Product page](#)

Datasheet for ABIN6149819
anti-UBE2Q2 antibody (AA 1-150)

1 Image

Overview

Quantity:	100 µL
Target:	UBE2Q2
Binding Specificity:	AA 1-150
Reactivity:	Human
Host:	Rabbit
Clonality:	Polyclonal
Conjugate:	This UBE2Q2 antibody is un-conjugated
Application:	Western Blotting (WB), Immunofluorescence (IF)

Product Details

Immunogen:	Recombinant fusion protein containing a sequence corresponding to amino acids 1-150 of human UBE2Q2 (NP_775740.1).
Sequence:	MSVSGLKAEL KFLASIFDKN HERFRIVSWK LDELHCQLV PQQGSPHSLP PPLTLHCNIT ESYPSSSPIW FVDSEDPNLT SVLERLEDTK NNNLLRQQLK WLICELCSLY NLPKHLDVEM LDQPLPTGQN GTTEEVTSEE EEEEEEMAED
Isotype:	IgG
Cross-Reactivity:	Human, Mouse
Characteristics:	Polyclonal Antibodies

Target Details

Target:	UBE2Q2
---------	--------

Target Details

Alternative Name: UBE2Q2 ([UBE2Q2 Products](#))

Background: Ube2Q2 is an E2 enzyme, which is part of the E1, E2, and E3 cascade responsible for ubiquitination of protein substrates. Ube2Q2 is thought to play a key role in regulating mitotic stages in cells. Its discovery was in connection with an arrest in the mitotic cell cycle. Inactivating this E2 prohibits the cell from continuing on past prophase. In cases of head and neck squamous cell carcinoma, there is an elevated level of Ube2Q2 in the cancerous tissues. Also when the expression levels decreased, the cancerous cells were found to have a resistance to chemotherapeutic agents.,UBE2Q2,Epigenetics & Nuclear Signaling,Cell Biology & Developmental Biology,Ubiquitin,Ubiquitin-Proteasome Signaling Pathway,UBE2Q2

Molecular Weight: 36 kDa/38 kDa/40 kDa/42 kDa

Gene ID: 92912

UniProt: [Q8WVN8](#)

Application Details

Application Notes: WB,1:500 - 1:2000,IF,1:50 - 1:100

Comment: HIGH QUALITY

Restrictions: For Research Use only

Handling

Format: Liquid

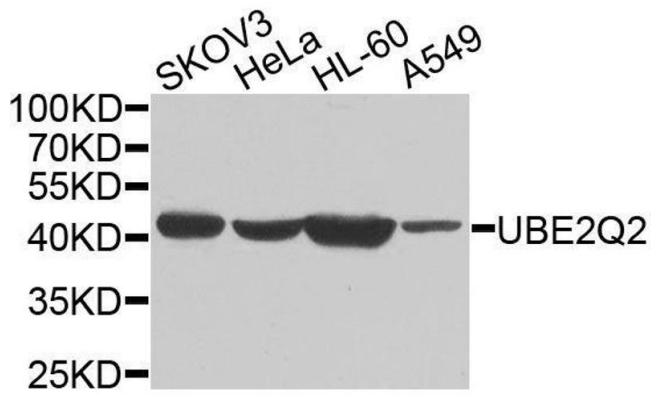
Buffer: PBS with 0.02 % sodium azide,50 % glycerol, pH 7.3.

Preservative: Sodium azide

Precaution of Use: This product contains Sodium azide: a POISONOUS AND HAZARDOUS SUBSTANCE which should be handled by trained staff only.

Storage: -20 °C

Storage Comment: Store at -20°C. Avoid freeze / thaw cycles.



Western Blotting

Image 1. Western blot analysis of extracts of various cell lines, using UBE2Q2 antibody.