



[Go to Product page](#)

Datasheet for ABIN6149825
anti-UBE2U antibody (AA 1-226)

3 Images

Overview

Quantity:	100 µL
Target:	UBE2U
Binding Specificity:	AA 1-226
Reactivity:	Human
Host:	Rabbit
Clonality:	Polyclonal
Conjugate:	This UBE2U antibody is un-conjugated
Application:	Western Blotting (WB), Immunohistochemistry (IHC)

Product Details

Immunogen:	Recombinant fusion protein containing a sequence corresponding to amino acids 1-226 of human UBE2U (NP_689702.1).
Sequence:	MHGRAYLLHH RDFCDLKENN YKGITAKPVS EDMMEWEVEI EGLQNSVWQG LVFQLTIHFT SEYNYAPPVV KFITIPFHPN VDPHTGQPCI DFLDNPEKWN TNYTLSSILL ALQVMLSNPV LENPNVLEAA RILVKDESLEY RTILRLFNRP LQMKDDSQEL PKDPRKCIRP IKTTSFSDYY QTWSRIATSK ATEYYRTPLL KVPNFIGQYY KWKKMDLQHQ KEWNLK
Isotype:	IgG
Cross-Reactivity:	Human, Mouse
Characteristics:	Polyclonal Antibodies

Target Details

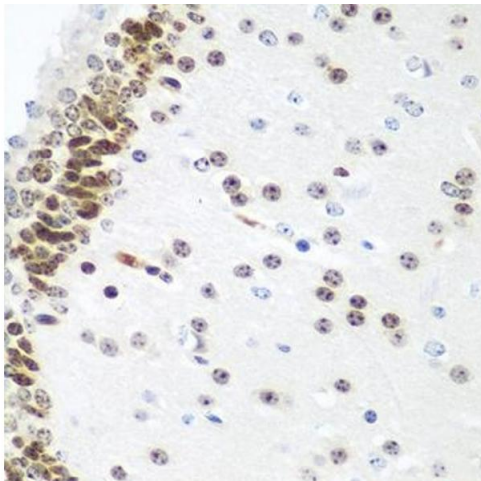
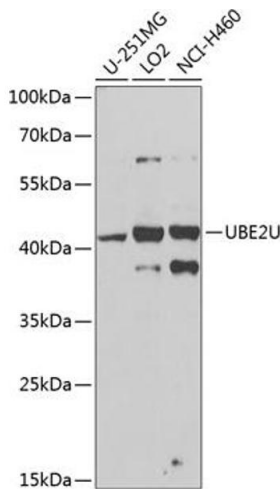
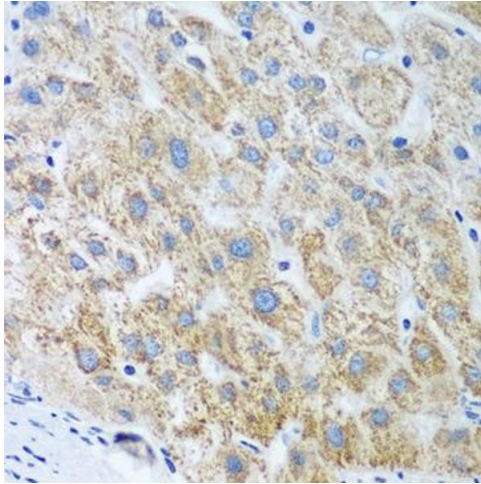
Target:	UBE2U
Alternative Name:	UBE2U (UBE2U Products)
Background:	Catalyzes the covalent attachment of ubiquitin to other proteins.,UBE2U,Epigenetics & Nuclear Signaling,Cell Biology & Developmental Biology,Ubiquitin,Ubiquitin-Proteasome Signaling Pathway,UBE2U
Molecular Weight:	26 kDa/37 kDa
Gene ID:	148581
UniProt:	Q5VVX9

Application Details

Application Notes:	WB,1:500 - 1:2000,IHC,1:50 - 1:100
Restrictions:	For Research Use only

Handling

Format:	Liquid
Buffer:	PBS with 0.02 % sodium azide,50 % glycerol, pH 7.3.
Preservative:	Sodium azide
Precaution of Use:	This product contains Sodium azide: a POISONOUS AND HAZARDOUS SUBSTANCE which should be handled by trained staff only.
Storage:	-20 °C
Storage Comment:	Store at -20°C. Avoid freeze / thaw cycles.



Immunohistochemistry

Image 1. Immunohistochemistry of paraffin-embedded human liver using UBE2U antibody (ABIN6130858, ABIN6149825, ABIN6149826 and ABIN6224418) at dilution of 1:100 (40x lens). Perform microwave antigen retrieval with 10 mM PBS buffer pH 7.2 before commencing with IHC staining protocol.

Western Blotting

Image 2. Western blot analysis of extracts of various cell lines, using UBE2U antibody (ABIN6130858, ABIN6149825, ABIN6149826 and ABIN6224418) at 1:1000 dilution. Secondary antibody: HRP Goat Anti-Rabbit IgG (H+L) (ABIN1684268 and ABIN3020597) at 1:10000 dilution. Lysates/proteins: 25 µg per lane. Blocking buffer: 3 % nonfat dry milk in TBST. Detection: ECL Basic Kit (RM00020). Exposure time: 30s.

Immunohistochemistry

Image 3. Immunohistochemistry of paraffin-embedded mouse brain using UBE2U antibody (ABIN6130858, ABIN6149825, ABIN6149826 and ABIN6224418) at dilution of 1:100 (40x lens). Perform microwave antigen retrieval with 10 mM PBS buffer pH 7.2 before commencing with IHC staining protocol.