

Datasheet for ABIN6149941
anti-RENT2/UPF2 antibody (AA 1153-1272)[Go to Product page](#)

3 Images

Overview

Quantity:	100 µL
Target:	RENT2/UPF2 (UPF2)
Binding Specificity:	AA 1153-1272
Reactivity:	Human
Host:	Rabbit
Clonality:	Polyclonal
Conjugate:	This RENT2/UPF2 antibody is un-conjugated
Application:	Western Blotting (WB)

Product Details

Immunogen:	Recombinant fusion protein containing a sequence corresponding to amino acids 1153-1272 of human UPF2 (NP_542166.1).
Sequence:	GPPLGGGEAE AESADTMPFV MLTRKGNKQQ FKILNVPMS QLAANHWNQQ QAEQEERM KRLTLDIRER QEQEDYQEML QSLAQRPA NTNRERRPRY QHPKGAPNAD LIFKTGGRRR
Isotype:	IgG
Cross-Reactivity:	Human, Mouse
Characteristics:	Polyclonal Antibodies

Target Details

Target:	RENT2/UPF2 (UPF2)
---------	-------------------

Target Details

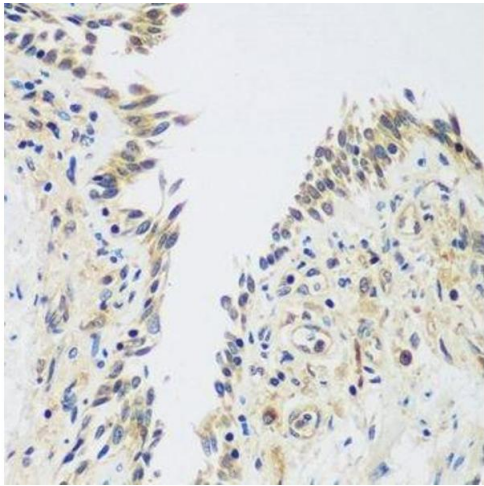
Alternative Name:	UPF2 (UPF2 Products)
Background:	<p>This gene encodes a protein that is part of a post-splicing multiprotein complex involved in both mRNA nuclear export and mRNA surveillance. mRNA surveillance detects exported mRNAs with truncated open reading frames and initiates nonsense-mediated mRNA decay (NMD). When translation ends upstream from the last exon-exon junction, this triggers NMD to degrade mRNAs containing premature stop codons. This protein is located in the perinuclear area. It interacts with translation release factors and the proteins that are functional homologs of yeast Upf1p and Upf3p. Two splice variants have been found for this gene, both variants encode the same protein.,UPF2,HUPF2,RENT2,smg-3,Epigenetics & Nuclear Signaling,UPF2</p>
Molecular Weight:	66 kDa/147 kDa
Gene ID:	26019
UniProt:	Q9HAU5

Application Details

Application Notes:	WB,1:500 - 1:2000
Comment:	HIGH QUALITY
Restrictions:	For Research Use only

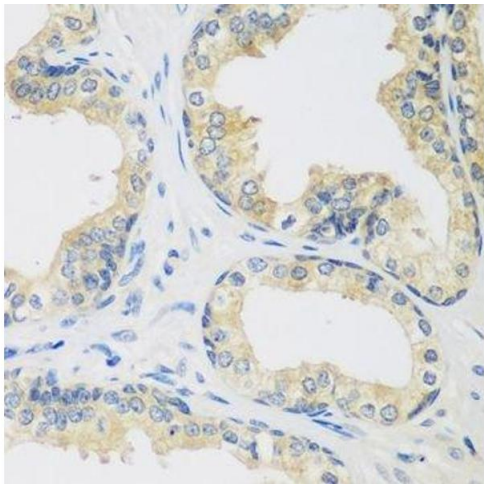
Handling

Format:	Liquid
Buffer:	PBS with 0.02 % sodium azide,50 % glycerol, pH 7.3.
Preservative:	Sodium azide
Precaution of Use:	This product contains Sodium azide: a POISONOUS AND HAZARDOUS SUBSTANCE which should be handled by trained staff only.
Storage:	-20 °C
Storage Comment:	Store at -20°C. Avoid freeze / thaw cycles.



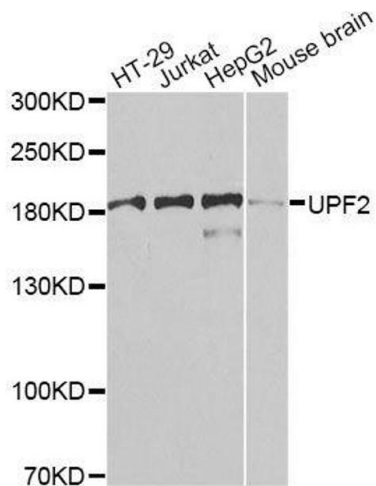
Immunohistochemistry (Paraffin-embedded Sections)

Image 1. Immunohistochemistry of paraffin-embedded human lung using UPF2 antibody.



Immunohistochemistry (Paraffin-embedded Sections)

Image 2. Immunohistochemistry of paraffin-embedded human prostate using UPF2 antibody.



Western Blotting

Image 3. Western blot analysis of extracts of various cell lines, using UPF2 antibody.