



[Go to Product page](#)

Datasheet for ABIN6150008  
**anti-USP25 antibody (AA 1-230)**

1 Image

Overview

Quantity:	100 µL
Target:	USP25
Binding Specificity:	AA 1-230
Reactivity:	Human
Host:	Rabbit
Clonality:	Polyclonal
Conjugate:	This USP25 antibody is un-conjugated
Application:	Western Blotting (WB), Immunohistochemistry (IHC)

Product Details

Immunogen:	Recombinant fusion protein containing a sequence corresponding to amino acids 1-230 of human USP25 (NP_037528.3).
Sequence:	MTVEQNVLQQ SAAQKHQQTFLNQLREITGINDTQILQQALKDSNGNLELAVAFLTAKNAK TPQQEETYYQTALPGNDRIISVGSQADTNVIDLTGDDKDLQRAIALSLAESNRAFRET GITDEEQAISRVLASIAENKACLKRTPTVWRDSRNPYDKRQDKAPVGLKNVGNTCWF SAVIQSLFNLLEFRRLVLNYPKPSNAQDLP RNQKEHRNLP FMRELRYLFA
Isotype:	IgG
Cross-Reactivity:	Human, Mouse, Rat
Characteristics:	Polyclonal Antibodies

## Target Details

---

Target:	USP25
Alternative Name:	USP25 ( <a href="#">USP25 Products</a> )
Background:	Ubiquitin (MIM 191339) is a highly conserved 76-amino acid protein involved in regulation of intracellular protein breakdown, cell cycle regulation, and stress response. Ubiquitin is released from degraded proteins by disassembly of the polyubiquitin chains, which is mediated by ubiquitin-specific proteases (USPs), such as USP25 (Valero et al., 1999 [PubMed 10644437]).[supplied by OMIM, Mar 2008],USP25,USP21,Epigenetics & Nuclear Signaling,Cell Biology & Developmental Biology,Ubiquitin,USP25
Molecular Weight:	122 kDa/125 kDa/129 kDa
Gene ID:	29761
UniProt:	<a href="#">Q9UHP3</a>

## Application Details

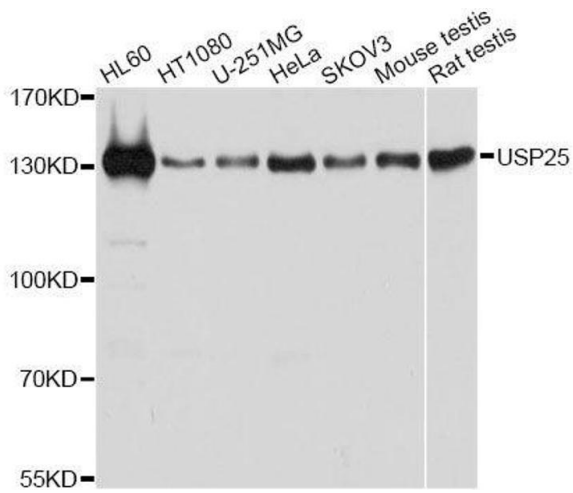
---

Application Notes:	WB,1:500 - 1:2000,IHC,1:50 - 1:200
Comment:	HIGH QUALITY
Restrictions:	For Research Use only

## Handling

---

Format:	Liquid
Buffer:	PBS with 0.02 % sodium azide,50 % glycerol, pH 7.3.
Preservative:	Sodium azide
Precaution of Use:	This product contains Sodium azide: a POISONOUS AND HAZARDOUS SUBSTANCE which should be handled by trained staff only.
Storage:	-20 °C
Storage Comment:	Store at -20°C. Avoid freeze / thaw cycles.



### Western Blotting

**Image 1.** Western blot analysis of extracts of various cell lines, using USP25 antibody.