

Datasheet for ABIN6150072
anti-VCP antibody (AA 647-806)

6 Images

[Go to Product page](#)

Overview

| | |
|----------------------|--|
| Quantity: | 100 µL |
| Target: | VCP |
| Binding Specificity: | AA 647-806 |
| Reactivity: | Human |
| Host: | Rabbit |
| Clonality: | Polyclonal |
| Conjugate: | This VCP antibody is un-conjugated |
| Application: | Western Blotting (WB), Immunohistochemistry (IHC), Immunofluorescence (IF) |

Product Details

| | |
|-------------------|---|
| Immunogen: | Recombinant fusion protein containing a sequence corresponding to amino acids 647-806 of human VCP (NP_009057.1). |
| Sequence: | LPDEKSRVAI LKANLRKSPV AKDVDLEFLA KMTNGFSGAD LTEICQRACK LAIRESIESE IRRERERQTN PSAMEVEEDD PVPEIRRDHF EEAMRFARRS VSDNDIRKYE MFAQTLQQSR GFGSFRFPSG NQGGAGPSQG SGGGTGGSVY TEDNDDDLYG |
| Isotype: | IgG |
| Cross-Reactivity: | Human, Mouse, Rat |
| Characteristics: | Polyclonal Antibodies |

Target Details

| | |
|---------|-----|
| Target: | VCP |
|---------|-----|

Target Details

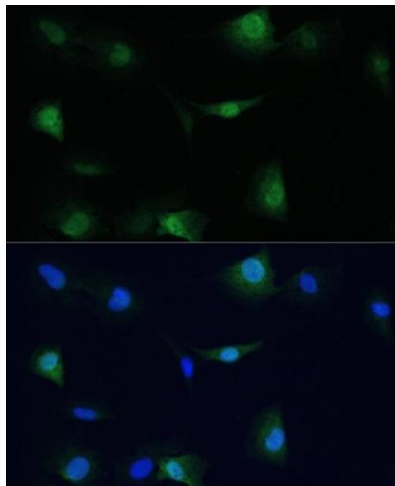
| | |
|-------------------|--|
| Alternative Name: | VCP (VCP Products) |
| Background: | The protein encoded by this gene is a member of a family that includes putative ATP-binding proteins involved in vesicle transport and fusion, 26S proteasome function, and assembly of peroxisomes. This protein, as a structural protein, is associated with clathrin, and heat-shock protein Hsc70, to form a complex. It has been implicated in a number of cellular events that are regulated during mitosis, including homotypic membrane fusion, spindle pole body function, and ubiquitin-dependent protein degradation.,VCP,ALS14,CDC48,CMT2Y,HEL-220,HEL-S-70,IBMPFD,IBMPFD1,TERA,p97,Signal Transduction,Cell Biology & Developmental Biology,Apoptosis,Endocrine & Metabolism,Mitochondrial metabolism,Mitochondrial markers,Neuroscience,Neurodegenerative Diseases,Dopamine Signaling in Parkinson's Disease,VCP |
| Molecular Weight: | 89 kDa |
| Gene ID: | 7415 |
| UniProt: | P55072 |
| Pathways: | ER-Nucleus Signaling , Positive Regulation of Endopeptidase Activity , Ubiquitin Proteasome Pathway |

Application Details

| | |
|--------------------|--|
| Application Notes: | WB,1:500 - 1:2000,IHC,1:50 - 1:200,IF,1:50 - 1:200 |
| Restrictions: | For Research Use only |

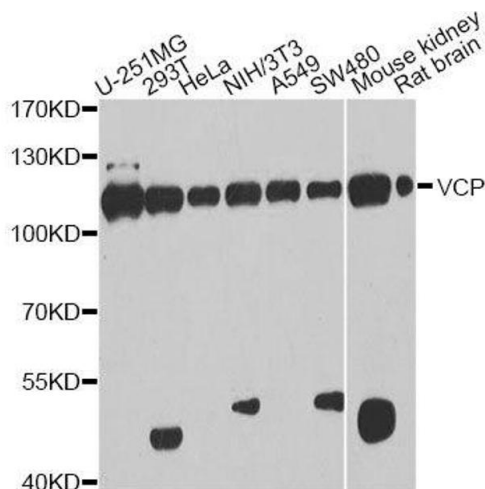
Handling

| | |
|--------------------|--|
| Format: | Liquid |
| Buffer: | PBS with 0.02 % sodium azide,50 % glycerol, pH 7.3. |
| Preservative: | Sodium azide |
| Precaution of Use: | This product contains Sodium azide: a POISONOUS AND HAZARDOUS SUBSTANCE which should be handled by trained staff only. |
| Storage: | -20 °C |
| Storage Comment: | Store at -20°C. Avoid freeze / thaw cycles. |



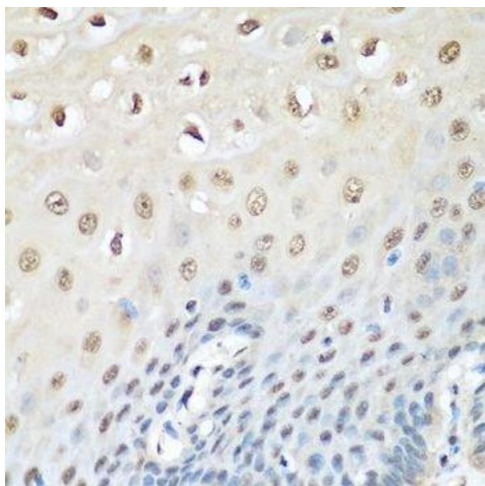
Immunofluorescence

Image 1. Immunofluorescence analysis of C6 cells using VCP antibody (ABIN6128632, ABIN6150072, ABIN6150073 and ABIN6217335) at dilution of 1:100. Blue: DAPI for nuclear staining.



Western Blotting

Image 2. Western blot analysis of extracts of various cell lines, using VCP antibody.



Immunohistochemistry (Paraffin-embedded Sections)

Image 3. Immunohistochemistry of paraffin-embedded human esophagus using VCP antibody.

Please check the [product details page](#) for more images. Overall 6 images are available for ABIN6150072.