



Datasheet for ABIN6150171
anti-WBP1 antibody (AA 170-269)



[Go to Product page](#)

1 Image

Overview

Quantity:	100 µL
Target:	WBP1
Binding Specificity:	AA 170-269
Reactivity:	Human
Host:	Rabbit
Clonality:	Polyclonal
Conjugate:	This WBP1 antibody is un-conjugated
Application:	Western Blotting (WB), Immunofluorescence (IF)

Product Details

Immunogen:	Recombinant fusion protein containing a sequence corresponding to amino acids 170-269 of human WBP1 (NP_036609.1).
Sequence:	GTNVEGVSSH QSAPPHQEGE PGAGVTPAST PPSCRYRRLT GDSGIELCPC PASGEGEPVK EVRVSATLPD LEDYSPCALP PESVPQIFPM GLSSSEGDIP
Isotype:	IgG
Cross-Reactivity:	Human, Mouse, Rat
Characteristics:	Polyclonal Antibodies

Target Details

Target:	WBP1
---------	------

Target Details

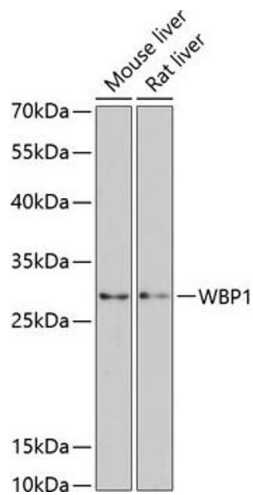
Alternative Name:	WBP1 (WBP1 Products)
Background:	The globular WW domain, named for the conserved tryptophan residues in the protein motif present in various structural and regulatory proteins, is known to play a role in the mediation of protein-protein interactions. This gene encodes a ligand of the WW domain of the Yes kinase-associated protein. Readthrough transcription of the neighboring upstream gene, which encodes INO80 complex subunit B, into this gene generates a non-coding transcript.,WBP1,WBP-1,Cell Biology & Developmental Biology,WBP1
Molecular Weight:	29 kDa
Gene ID:	23559
UniProt:	Q96G27

Application Details

Application Notes:	WB,1:500 - 1:2000,IF,1:50 - 1:100
Restrictions:	For Research Use only

Handling

Format:	Liquid
Buffer:	PBS with 0.02 % sodium azide,50 % glycerol, pH 7.3.
Preservative:	Sodium azide
Precaution of Use:	This product contains Sodium azide: a POISONOUS AND HAZARDOUS SUBSTANCE which should be handled by trained staff only.
Storage:	-20 °C
Storage Comment:	Store at -20°C. Avoid freeze / thaw cycles.



Western Blotting

Image 1. Western blot analysis of extracts of various cell lines, using WBP1 antibody (ABIN6128930, ABIN6150171, ABIN6150172 and ABIN6217128) at 1:3000 dilution. Secondary antibody: HRP Goat Anti-Rabbit IgG (H+L) (ABIN1684268 and ABIN3020597) at 1:10000 dilution. Lysates/proteins: 25 μ g per lane. Blocking buffer: 3 % nonfat dry milk in TBST. Detection: ECL Basic Kit (RM00020). Exposure time: 90s.