

Datasheet for ABIN6150181
anti-WDR1 antibody (AA 300-500)



[Go to Product page](#)

1 Image

Overview

Quantity:	100 µL
Target:	WDR1
Binding Specificity:	AA 300-500
Reactivity:	Human
Host:	Rabbit
Clonality:	Polyclonal
Conjugate:	This WDR1 antibody is un-conjugated
Application:	Western Blotting (WB)

Product Details

Immunogen:	Recombinant fusion protein containing a sequence corresponding to amino acids 300-500 of human WDR1 (NP_059830.1).
Sequence:	YINYLDRNNP SKPLHVIKGH SKSIQCLTVH KNGGKSYIYS GSHDGHINYW DSETGENDSF AGKGHTNQVS RMTVDESGQL ISCSMDDTVR YTSLMLRDYS GQGVVKLDVQ PKCVAVGPGG YAVVVCIGQI VLLKDQRKCF SIDNPGYEPE WVAVHPGGDT VAIGGVDGNV RLYSILGTTL KDEGKLEAK GPVTDVAYSH D
Isotype:	IgG
Cross-Reactivity:	Human, Mouse, Rat
Characteristics:	Polyclonal Antibodies

Target Details

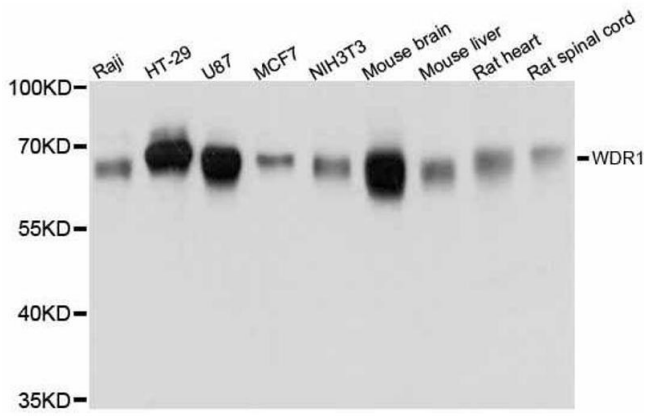
Target:	WDR1
Alternative Name:	WDR1 (WDR1 Products)
Background:	This gene encodes a protein containing 9 WD repeats. WD repeats are approximately 30- to 40-amino acid domains containing several conserved residues, mostly including a trp-asp at the C-terminal end. WD domains are involved in protein-protein interactions. The encoded protein may help induce the disassembly of actin filaments. Two transcript variants encoding different isoforms have been found for this gene.,WDR1,AIP1,HEL-S-52,NORI-1,Signal Transduction,Cell Biology & Developmental Biology,Cytoskeleton,Microfilaments,WDR1
Molecular Weight:	50 kDa/66 kDa
Gene ID:	9948
UniProt:	O75083
Pathways:	Sensory Perception of Sound

Application Details

Application Notes:	WB,1:500 - 1:2000
Comment:	HIGH QUALITY
Restrictions:	For Research Use only

Handling

Format:	Liquid
Buffer:	PBS with 0.02 % sodium azide,50 % glycerol, pH 7.3.
Preservative:	Sodium azide
Precaution of Use:	This product contains Sodium azide: a POISONOUS AND HAZARDOUS SUBSTANCE which should be handled by trained staff only.
Storage:	-20 °C
Storage Comment:	Store at -20°C. Avoid freeze / thaw cycles.



Western Blotting

Image 1. Western blot analysis of extracts of various cell lines, using WDR1 antibody.