

Datasheet for ABIN6150184
anti-WDR11 antibody (AA 975-1224)[Go to Product page](#)

1 Image

Overview

Quantity:	100 µL
Target:	WDR11
Binding Specificity:	AA 975-1224
Reactivity:	Human
Host:	Rabbit
Clonality:	Polyclonal
Conjugate:	This WDR11 antibody is un-conjugated
Application:	Western Blotting (WB)

Product Details

Immunogen:	Recombinant fusion protein containing a sequence corresponding to amino acids 975-1224 of human WDR11 (NP_060587.8).
Sequence:	YFQKFQLERV NLQEVKRSTY DHTRKCTDQL LLLGQTDRAV QLLLETSADN QHYECDLKA CLVTTVTSSG PSQSTIKLVA TNMIANGKLA EGVQLLCLID KAADACRYLQ TYGEWNRAAW LAKVRLNP EE CADVLRWVD HLCSPQVNQK SKALLVLLSL GCFFSVAETL HSMRYFDRAA LFVEACKLYG AFEVTEDEK LITAIYADYA RSLKNLGFKQ GAVLFASKAG AAGKDLLNEL ESPKEEPIEE
Isotype:	IgG
Cross-Reactivity:	Human
Characteristics:	Polyclonal Antibodies

Target Details

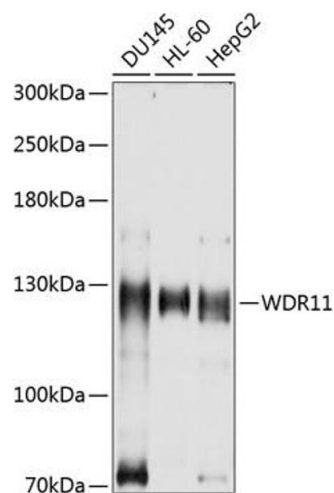
Target:	WDR11
Alternative Name:	WDR11 (WDR11 Products)
Background:	<p>This gene encodes a member of the WD repeat protein family. WD repeats are minimally conserved regions of approximately 40 amino acids typically bracketed by gly-his and trp-aspartate (GH-WD), which may facilitate formation of heterotrimeric or multiprotein complexes. Members of this family are involved in a variety of cellular processes, including cell cycle progression, signal transduction, apoptosis, and gene regulation. This gene is located in the chromosome 10q25-26 region, which is frequently deleted in gliomas and tumors of other tissues, and is disrupted by the t(10;19) translocation rearrangement in glioblastoma cells. The gene location suggests that it is a candidate gene for the tumor suppressor locus.</p> <p>WDR11, BRWD2, DR11, HH14, SRI1, WDR15, Epigenetics & Nuclear Signaling, Cancer, Tumor suppressors, WDR11</p>
Molecular Weight:	136 kDa
Gene ID:	55717
UniProt:	Q9BZH6

Application Details

Application Notes:	WB, 1:1000 - 1:2000
Comment:	HIGH QUALITY
Restrictions:	For Research Use only

Handling

Format:	Liquid
Buffer:	PBS with 0.02 % sodium azide, 50 % glycerol, pH 7.3.
Preservative:	Sodium azide
Precaution of Use:	This product contains Sodium azide: a POISONOUS AND HAZARDOUS SUBSTANCE which should be handled by trained staff only.
Storage:	-20 °C
Storage Comment:	Store at -20°C. Avoid freeze / thaw cycles.



Western Blotting

Image 1. Western blot analysis of extracts of various cell lines, using WDR11 antibody (ABIN6131410, ABIN6150184, ABIN6150185 and ABIN6214893) at 1:1000 dilution. Secondary antibody: HRP Goat Anti-Rabbit IgG (H+L) (ABIN1684268 and ABIN3020597) at 1:10000 dilution. Lysates/proteins: 25 µg per lane. Blocking buffer: 3 % nonfat dry milk in TBST. Detection: ECL Basic Kit (RM00020). Exposure time: 30s.