

Datasheet for ABIN6150188
anti-WDR33 antibody (AA 1-208)[Go to Product page](#)

1 Image

Overview

| | |
|----------------------|--------------------------------------|
| Quantity: | 100 µL |
| Target: | WDR33 |
| Binding Specificity: | AA 1-208 |
| Reactivity: | Mouse |
| Host: | Rabbit |
| Clonality: | Polyclonal |
| Conjugate: | This WDR33 antibody is un-conjugated |
| Application: | Western Blotting (WB) |

Product Details

| | |
|-------------------|---|
| Immunogen: | Recombinant fusion protein containing a sequence corresponding to amino acids 1-208 of mouse WDR33 (NP_001164437.1). |
| Sequence: | MATEIGSPPR FFHMPRFQHQ APRQLFYKRP DFAQQQAMQQ LTFDGKMRMK AVNRKTIDYN PSVIKYLENR IWQRDQRDMR AIQPDAGYYN DLVPPIGMLN NPMNAVTTKF VRTSTNKVKC PVFVVRWTPE GRRLVTGASS GEFTLWNGLT FNFETILQAH DSPVRAMTWS HNDMWMLTAD HGGYVKYWQS NMNNVKMFQA HKEAIREA |
| Isotype: | IgG |
| Cross-Reactivity: | Human, Rat |
| Characteristics: | Polyclonal Antibodies |

Target Details

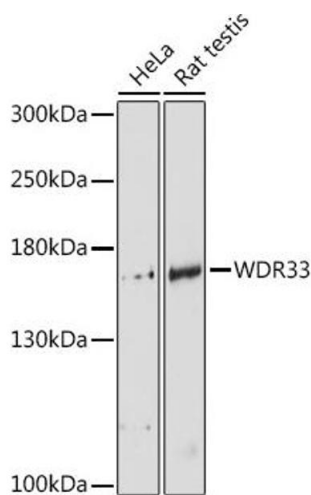
| | |
|-------------------|--|
| Target: | WDR33 |
| Alternative Name: | WDR33 (WDR33 Products) |
| Background: | <p>This gene encodes a member of the WD repeat protein family. WD repeats are minimally conserved regions of approximately 40 amino acids typically bracketed by gly-his and trp-aspartate (GH-WD), which may facilitate formation of heterotrimeric or multiprotein complexes. Members of this family are involved in a variety of cellular processes, including cell cycle progression, signal transduction, apoptosis, and gene regulation. This gene is highly expressed in testis and the protein is localized to the nucleus. This gene may play important roles in the mechanisms of cytodifferentiation and/or DNA recombination. Multiple alternatively spliced transcript variants encoding distinct isoforms have been found for this gene.,WDR33,NET14,WDC146,Cell Biology & Developmental Biology,WDR33</p> |
| Molecular Weight: | 30 kDa/38 kDa/145 kDa |
| Gene ID: | 74320 |

Application Details

| | |
|--------------------|-----------------------|
| Application Notes: | WB,1:500 - 1:2000 |
| Restrictions: | For Research Use only |

Handling

| | |
|--------------------|--|
| Format: | Liquid |
| Buffer: | PBS with 0.02 % sodium azide,50 % glycerol, pH 7.3. |
| Preservative: | Sodium azide |
| Precaution of Use: | This product contains Sodium azide: a POISONOUS AND HAZARDOUS SUBSTANCE which should be handled by trained staff only. |
| Storage: | -20 °C |
| Storage Comment: | Store at -20°C. Avoid freeze / thaw cycles. |



Western Blotting

Image 1. Western blot analysis of extracts of various cell lines, using WDR33 antibody (ABIN6128921, ABIN6150188, ABIN6150190 and ABIN6218494) at 1:3000 dilution. Secondary antibody: HRP Goat Anti-Rabbit IgG (H+L) (ABIN1684268 and ABIN3020597) at 1:10000 dilution. Lysates/proteins: 25 µg per lane. Blocking buffer: 3 % nonfat dry milk in TBST. Detection: ECL Basic Kit (RM00020). Exposure time: 90s.