



[Go to Product page](#)

Datasheet for ABIN6150207
anti-WDR81 antibody (AA 360-600)

1 Image

Overview

Quantity:	100 µL
Target:	WDR81
Binding Specificity:	AA 360-600
Reactivity:	Human
Host:	Rabbit
Clonality:	Polyclonal
Conjugate:	This WDR81 antibody is un-conjugated
Application:	Western Blotting (WB)

Product Details

Immunogen:	Recombinant fusion protein containing a sequence corresponding to amino acids 360-600 of human WDR81 (NP_689561.2).
Sequence:	RIGQEMVQQH LSEPVATFFQ VFSQLHELRL QDLKLDPAGR GEGQLPQVVF SDGQQRPVDP ALLDELQKVF TLEMAYTIYV PFSCLLGDII RKIIPNHELIV GELAALYLES ISPSSRNPAS VEPTMPGTGP EWDPHGGGCP QDDGHSGTFFG SVLVGNRIQI PNDSRPENPG PLGPISGVGG GGLGSGSDDN ALKQELPRSV HGLSGNWLAY WQYEIGVSQQ DAHFHFHQIR LQSFPGHSGA V
Isotype:	IgG
Cross-Reactivity:	Human, Mouse, Rat
Characteristics:	Polyclonal Antibodies

Target Details

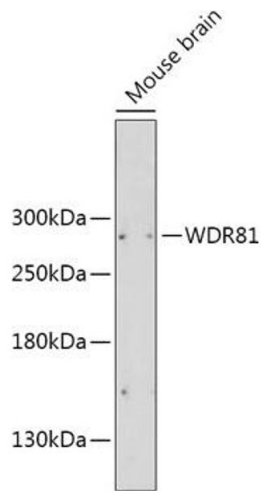
Target:	WDR81
Alternative Name:	WDR81 (WDR81 Products)
Background:	This gene encodes a multi-domain transmembrane protein, which is predominantly expressed in the brain. Mutations in this gene are associated with autosomal recessive cerebellar ataxia, mental retardation, and dysequilibrium syndrome-2. Alternatively spliced transcript variants encoding different isoforms have been found for this gene.,WDR81,CAMRQ2,PPP1R166,SORF-2,Cell Biology & Developmental Biology,WDR81
Molecular Weight:	74 kDa/77 kDa/79 kDa/95 kDa/197 kDa/211 kDa
Gene ID:	124997
UniProt:	Q562E7

Application Details

Application Notes:	WB,1:500 - 1:2000
Comment:	HIGH QUALITY
Restrictions:	For Research Use only

Handling

Format:	Liquid
Buffer:	PBS with 0.02 % sodium azide,50 % glycerol, pH 7.3.
Preservative:	Sodium azide
Precaution of Use:	This product contains Sodium azide: a POISONOUS AND HAZARDOUS SUBSTANCE which should be handled by trained staff only.
Storage:	-20 °C
Storage Comment:	Store at -20°C. Avoid freeze / thaw cycles.



Western Blotting

Image 1. Western blot analysis of extracts of Mouse brain, using WDR81 antibody (ABIN6133378, ABIN6150207, ABIN6150208 and ABIN6216529) at 1:2000 dilution. Secondary antibody: HRP Goat Anti-Rabbit IgG (H+L) (ABIN1684268 and ABIN3020597) at 1:10000 dilution. Lysates/proteins: 25 µg per lane. Blocking buffer: 3 % nonfat dry milk in TBST. Detection: ECL Basic Kit (RM00020). Exposure time: 90s.