

Datasheet for ABIN6150218  
**anti-WIF1 antibody (AA 29-220)**[Go to Product page](#)

## 3 Images

## Overview

Quantity:	100 µL
Target:	WIF1
Binding Specificity:	AA 29-220
Reactivity:	Human
Host:	Rabbit
Clonality:	Polyclonal
Conjugate:	This WIF1 antibody is un-conjugated
Application:	Western Blotting (WB), Immunofluorescence (IF)

## Product Details

Immunogen:	Recombinant fusion protein containing a sequence corresponding to amino acids 29-220 of human WIF1 (NP_009122.2).
Sequence:	GPPQEESLYL WIDAHQARVL IGFEEDILIV SEGKMAPFTH DFRKAQQRMP AIPVNIHSMN FTWQAAGQAE YFYEFSLRS LDKGIMADPT VNVPLLGTVP HKASVVQVGF PCLGKQDGVA AFEVDVIVMN SEGNTILQTP QNAIFFKTCQ QAECPPGGCRN GGFCNERRIC ECPDGFHGP CEKALCTPRC MN
Isotype:	IgG
Cross-Reactivity:	Human, Mouse, Rat
Characteristics:	Polyclonal Antibodies

## Target Details

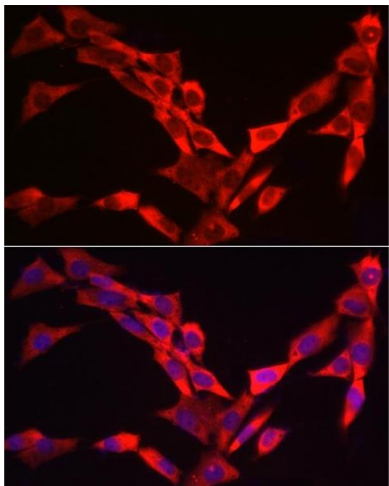
Target:	WIF1
Alternative Name:	WIF1 ( <a href="#">WIF1 Products</a> )
Background:	The protein encoded by this gene functions to inhibit WNT proteins, which are extracellular signaling molecules that play a role in embryonic development. This protein contains a WNT inhibitory factor (WIF) domain and five epidermal growth factor (EGF)-like domains, and is thought to be involved in mesoderm segmentation. This gene functions as a tumor suppressor gene, and has been found to be epigenetically silenced in various cancers.,WIF1,WIF-1,Cell Biology & Developmental Biology,Wnt/ $\beta$ -Catenin Signaling Pathway,Stem Cells,WIF1
Molecular Weight:	41 kDa
Gene ID:	11197
UniProt:	<a href="#">Q9Y5W5</a>
Pathways:	<a href="#">WNT Signaling</a> , <a href="#">Positive Regulation of fat Cell Differentiation</a>

## Application Details

Application Notes:	WB,1:500 - 1:2000,IF,1:50 - 1:200
Comment:	HIGH QUALITY
Restrictions:	For Research Use only

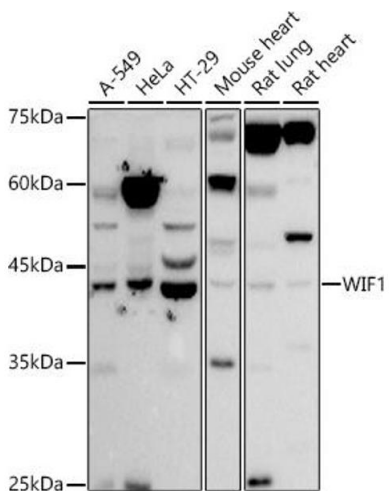
## Handling

Format:	Liquid
Buffer:	PBS with 0.02 % sodium azide,50 % glycerol, pH 7.3.
Preservative:	Sodium azide
Precaution of Use:	This product contains Sodium azide: a POISONOUS AND HAZARDOUS SUBSTANCE which should be handled by trained staff only.
Storage:	-20 °C
Storage Comment:	Store at -20°C. Avoid freeze / thaw cycles.



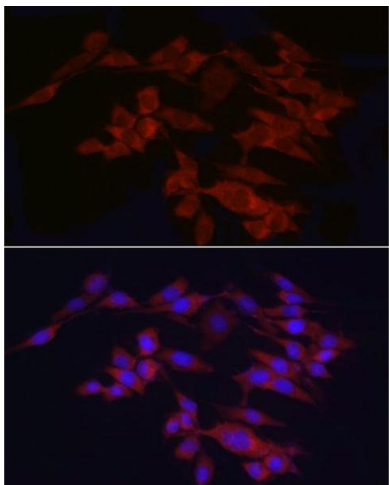
### Immunofluorescence

**Image 1.** Immunofluorescence analysis of NIH/3T3 cells using WIF1 Rabbit pAb (ABIN6128927, ABIN6150218, ABIN6150220 and ABIN6221033) at dilution of 1:25 (40x lens). Blue: DAPI for nuclear staining.



### Western Blotting

**Image 2.** Western blot analysis of extracts of various cell lines, using WIF1 antibody (ABIN6128927, ABIN6150218, ABIN6150220 and ABIN6221033) at 1:500 dilution. Secondary antibody: HRP Goat Anti-Rabbit IgG (H+L) (ABIN1684268 and ABIN3020597) at 1:10000 dilution. Lysates/proteins: 25 µg per lane. Blocking buffer: 3 % nonfat dry milk in TBST. Detection: ECL Basic Kit (RM00020). Exposure time: 10s.



### Immunofluorescence

**Image 3.** Immunofluorescence analysis of PC-12 cells using WIF1 Rabbit pAb (ABIN6128927, ABIN6150218, ABIN6150220 and ABIN6221033) at dilution of 1:25 (40x lens). Blue: DAPI for nuclear staining.