



[Go to Product page](#)

Datasheet for ABIN6150223
anti-WIPI2 antibody (AA 187-436)

2 Images

Overview

Quantity:	100 µL
Target:	WIPI2
Binding Specificity:	AA 187-436
Reactivity:	Human
Host:	Rabbit
Clonality:	Polyclonal
Conjugate:	This WIPI2 antibody is un-conjugated
Application:	Western Blotting (WB)

Product Details

Immunogen:	Recombinant fusion protein containing a sequence corresponding to amino acids 187-436 of human WIPI2 (NP_057087.2).
Sequence:	LAALAFDASG TKLATASEKG TVIRVFSIPE GQKLFEFRRG VKRCVSICSL AFSMDGMFLS ASSNTETVHI FKLETVKEKP PEEPTTWTGY FGKVLMASTS YLPSQVTEMF NQGRAFATVR LPFCGHKNIC SLATIQQIPR LLVGAADGYL YMYNLDPQEG GECALMKQHR LDGSLETTNE ILDSASHDCP LVTQTYGAAA GKGTYVPSSP TRLAYTDDL G AVGGACLEDE ASALRLDEDS EHPPMILRTD
Isotype:	IgG
Cross-Reactivity:	Human, Mouse, Rat
Characteristics:	Polyclonal Antibodies

Target Details

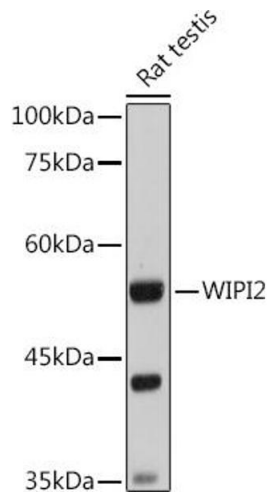
Target:	WIPI2
Alternative Name:	WIPI2 (WIPI2 Products)
Background:	WD40 repeat proteins are key components of many essential biologic functions. They regulate the assembly of multiprotein complexes by presenting a beta-propeller platform for simultaneous and reversible protein-protein interactions. Members of the WIPI subfamily of WD40 repeat proteins, such as WIPI2, have a 7-bladed propeller structure and contain a conserved motif for interaction with phospholipids (Proikas-Cezanne et al., 2004 [PubMed 15602573]).[supplied by OMIM, Mar 2008],WIPI2,ATG18B,Atg21,CGI-50,WIPI-2,Cell Biology & Developmental Biology,Autophagy,Endocrine & Metabolism,Mitochondrial metabolism,Regulators,WIPI2
Molecular Weight:	42 kDa/46 kDa/47 kDa/48 kDa/49 kDa
Gene ID:	26100
UniProt:	Q9Y4P8

Application Details

Application Notes:	WB,1:500 - 1:2000
Comment:	HIGH QUALITY
Restrictions:	For Research Use only

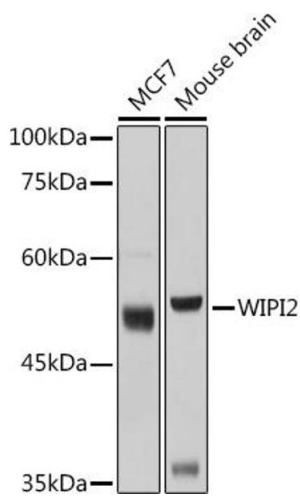
Handling

Format:	Liquid
Buffer:	PBS with 0.02 % sodium azide,50 % glycerol, pH 7.3.
Preservative:	Sodium azide
Precaution of Use:	This product contains Sodium azide: a POISONOUS AND HAZARDOUS SUBSTANCE which should be handled by trained staff only.
Storage:	-20 °C
Storage Comment:	Store at -20°C. Avoid freeze / thaw cycles.



Western Blotting

Image 1. Western blot analysis of extracts of Rat testis, using WIPI2 antibody (ABIN6133278, ABIN6150223, ABIN6150225 and ABIN6223441) at 1:1000 dilution. Secondary antibody: HRP Goat Anti-Rabbit IgG (H+L) (ABIN1684268 and ABIN3020597) at 1:10000 dilution. Lysates/proteins: 25 µg per lane. Blocking buffer: 3 % nonfat dry milk in TBST. Detection: ECL Basic Kit (RM00020). Exposure time: 30s.



Western Blotting

Image 2. Western blot analysis of extracts of various cell lines, using WIPI2 antibody (ABIN6133278, ABIN6150223, ABIN6150225 and ABIN6223441) at 1:1000 dilution. Secondary antibody: HRP Goat Anti-Rabbit IgG (H+L) (ABIN1684268 and ABIN3020597) at 1:10000 dilution. Lysates/proteins: 25 µg per lane. Blocking buffer: 3 % nonfat dry milk in TBST. Detection: ECL Basic Kit (RM00020). Exposure time: 3s.