



[Go to Product page](#)

Datasheet for ABIN6150231
anti-WNK1 antibody (AA 1-210)

2 Images

Overview

Quantity:	100 µL
Target:	WNK1
Binding Specificity:	AA 1-210
Reactivity:	Human
Host:	Rabbit
Clonality:	Polyclonal
Conjugate:	This WNK1 antibody is un-conjugated
Application:	Western Blotting (WB), Immunofluorescence (IF)

Product Details

Immunogen:	Recombinant fusion protein containing a sequence corresponding to amino acids 1-210 of human WNK1 (NP_055638.2).
Sequence:	MSGGAAEKQS STPGSLFLSP PAPAPKNGSS SDSSVGEKLG AAAADAVTGR TEEYRRRRHT MDKDSRGAAA TTTTTEHRFF RRSVICDSNA TALELPGLPL SLPQPSIPAA VPQSAPPEPH REETVTATAT SQVAQQPPAA AAPGEQAVAG PAPSTVPSST SKDRPVSQPS LVGSKEEPPP ARSGSGGGSA KEPQEERSQQ QDDIEELETK
Isotype:	IgG
Cross-Reactivity:	Human
Characteristics:	Polyclonal Antibodies

Target Details

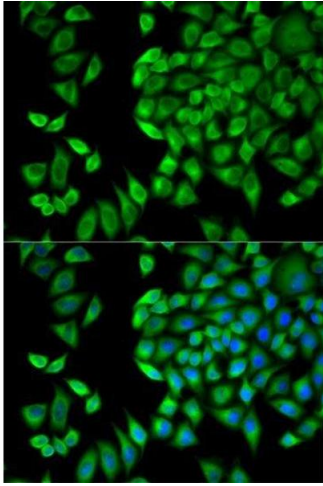
Target:	WNK1
Alternative Name:	WNK1 (WNK1 Products)
Background:	<p>This gene encodes a member of the WNK subfamily of serine/threonine protein kinases. The encoded protein may be a key regulator of blood pressure by controlling the transport of sodium and chloride ions. Mutations in this gene have been associated with pseudohypoaldosteronism type II and hereditary sensory neuropathy type II. Alternatively spliced transcript variants encoding different isoforms have been described but the full-length nature of all of them has yet to be determined.,WNK1,HSAN2,HSN2,KDP,PPP1R167,PRKWNK1,PSK,p65,Signal Transduction,Kinase,WNK1</p>
Molecular Weight:	206 kDa/225 kDa/250 kDa/279 kDa/299 kDa
Gene ID:	65125
UniProt:	Q9H4A3

Application Details

Application Notes:	WB,1:500 - 1:2000,IF,1:50 - 1:200
Comment:	HIGH QUALITY
Restrictions:	For Research Use only

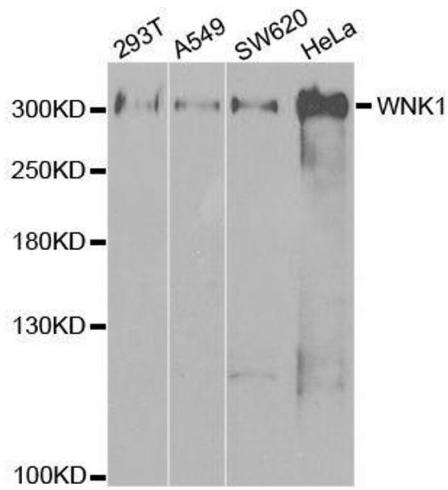
Handling

Format:	Liquid
Buffer:	PBS with 0.02 % sodium azide,50 % glycerol, pH 7.3.
Preservative:	Sodium azide
Precaution of Use:	This product contains Sodium azide: a POISONOUS AND HAZARDOUS SUBSTANCE which should be handled by trained staff only.
Storage:	-20 °C
Storage Comment:	Store at -20°C. Avoid freeze / thaw cycles.



Immunofluorescence

Image 1. Immunofluorescence analysis of HeLa cells using WNK1 antibody.



Western Blotting

Image 2. Western blot analysis of extracts of various cell lines, using WNK1 antibody.