



[Go to Product page](#)

Datasheet for ABIN6150278  
**anti-WWTR1 antibody (AA 1-230)**

7 Images

Overview

Quantity:	100 µL
Target:	WWTR1
Binding Specificity:	AA 1-230
Reactivity:	Human
Host:	Rabbit
Clonality:	Polyclonal
Conjugate:	This WWTR1 antibody is un-conjugated
Application:	Western Blotting (WB), Immunohistochemistry (IHC), Immunofluorescence (IF)

Product Details

Immunogen:	Recombinant fusion protein containing a sequence corresponding to amino acids 1-230 of human TAZ (NP_056287.1).
Sequence:	MNPASAPPPL PPPGQQVIHV TQDLDTDLEA LFNSVMNPKP SSWRKKILPE SFFKEPDSGS HSRQSSTDSS GGHPGPRLAG GAQHVRSHSS PASLQLGTGA GAAGSPAQQH AHLRQQSYDV TDELPLPPGW EMTFTATGQR YFLNHIEKIT TWQDPRKAMN QPLNHMNLHP AVSSTPVPPQR SMAVSQPNLV MNHQHQQQMA PSTLSQQNHP TQNPPAGLMS MPNALTTQQQ
Isotype:	IgG
Cross-Reactivity:	Human, Mouse, Rat
Characteristics:	Polyclonal Antibodies

## Target Details

---

Target:	WWTR1
Alternative Name:	WWTR1 ( <a href="#">WWTR1 Products</a> )
Background:	<p>Transcriptional coactivator which acts as a downstream regulatory target in the Hippo signaling pathway that plays a pivotal role in organ size control and tumor suppression by restricting proliferation and promoting apoptosis. The core of this pathway is composed of a kinase cascade wherein STK3/MST2 and STK4/MST1, in complex with its regulatory protein SAV1, phosphorylates and activates LATS1/2 in complex with its regulatory protein MOB1, which in turn phosphorylates and inactivates YAP1 oncoprotein and WWTR1/TAZ. WWTR1 enhances PAX8 and NKX2-1/TTF1-dependent gene activation. In conjunction with YAP1, involved in the regulation of TGFB1-dependent SMAD2 and SMAD3 nuclear accumulation. Plays a key role in coupling SMADs to the transcriptional machinery such as the mediator complex. Regulates embryonic stem-cell self-renewal, promotes cell proliferation and epithelial-mesenchymal transition.,WW domain-containing transcription regulator protein 1,Transcriptional coactivator with PDZ-binding motif,TAZ,WWTR1,Epigenetics &amp; Nuclear Signaling,Cell Biology &amp; Developmental Biology,Hippo Signaling Pathway,Stem Cells,Mesenchymal Stem Cells,WWTR1</p>
Molecular Weight:	44 kDa
Gene ID:	25937
UniProt:	<a href="#">Q9GZV5</a>
Pathways:	<a href="#">Regulation of Lipid Metabolism by PPARalpha</a>

## Application Details

---

Application Notes:	WB,1:500 - 1:2000,IHC,1:50 - 1:200,IF,1:50 - 1:200
Comment:	HIGH QUALITY
Restrictions:	For Research Use only

## Handling

---

Format:	Liquid
Buffer:	PBS with 0.02 % sodium azide,50 % glycerol, pH 7.3.
Preservative:	Sodium azide
Precaution of Use:	This product contains Sodium azide: a POISONOUS AND HAZARDOUS SUBSTANCE which

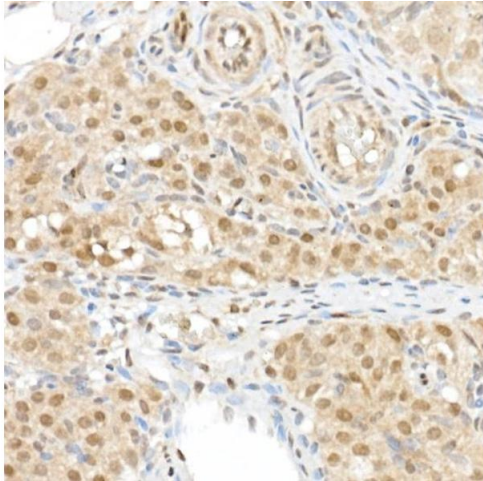
## Handling

should be handled by trained staff only.

Storage: -20 °C

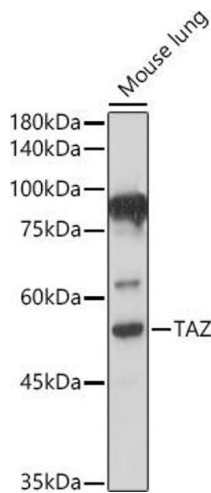
Storage Comment: Store at -20°C. Avoid freeze / thaw cycles.

## Images



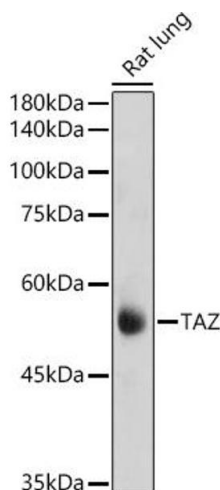
### Immunohistochemistry

**Image 1.** Immunohistochemistry of paraffin-embedded rat ovary using TAZ Rabbit pAb (ABIN6130800, ABIN6150278, ABIN6150279 and ABIN6224227) at dilution of 1:50 (40x lens). Perform high pressure antigen retrieval with 10 mM citrate buffer pH 6.0 before commencing with IHC staining protocol.



### Western Blotting

**Image 2.** Western blot analysis of extracts of Mouse lung, using TAZ antibody (ABIN6130800, ABIN6150278, ABIN6150279 and ABIN6224227) at 1:500 dilution. Secondary antibody: HRP Goat Anti-Rabbit IgG (H+L) (ABIN1684268 and ABIN3020597) at 1:10000 dilution. Lysates/proteins: 25 µg per lane. Blocking buffer: 3 % nonfat dry milk in TBST. Detection: ECL Basic Kit (RM00020). Exposure time: 30s.



### Western Blotting

**Image 3.** Western blot analysis of extracts of Rat lung, using TAZ antibody (ABIN6130800, ABIN6150278, ABIN6150279 and ABIN6224227) at 1:1000 dilution. Secondary antibody: HRP Goat Anti-Rabbit IgG (H+L) (ABIN1684268 and ABIN3020597) at 1:10000 dilution. Lysates/proteins: 25 µg per lane. Blocking buffer: 3 % nonfat dry milk in TBST. Detection: ECL Basic Kit (RM00020). Exposure time: 180s.

## Images

---

Please check the [product details page](#) for more images. Overall 7 images are available for ABIN6150278.