

Datasheet for ABIN6150299  
**anti-XPO5 antibody (AA 925-1204)**



[Go to Product page](#)

5 Images

## Overview

Quantity:	100 µL
Target:	XPO5
Binding Specificity:	AA 925-1204
Reactivity:	Human
Host:	Rabbit
Clonality:	Polyclonal
Conjugate:	This XPO5 antibody is un-conjugated
Application:	Western Blotting (WB), Immunofluorescence (IF), Immunoprecipitation (IP)

## Product Details

Immunogen:	Recombinant fusion protein containing a sequence corresponding to amino acids 925-1204 of human Exportin 5 (Exportin 5 (XPO5)) (NP_065801.1).
Sequence:	MRLSQKWQVI NQRSLLCGED EAADENPESQ EMLEEQLVRM LTREVM DLIT VCCVSKKGAD HSSAPPADGD DEEMMATEVT PSAMAELTDL GKCLMKHEDV CTALLITAFN SLAWKDTLSC QRTTSQLCWP LLKQVLSGTL LADAVTWLFT SVLKGLQMHG QHDGCMASLV HLA FQIYEAL RPRYLEIRAV MEQIPEIQKD SLDQFDCKLL NPSLQKVADK RRKDQFKRLI AGCIGKPLGE QFRKEVHIKN LPSLFKTKP MLETEVLDND GGGLATIFEP
Isotype:	IgG
Cross-Reactivity:	Human, Mouse, Rat
Characteristics:	Polyclonal Antibodies

## Target Details

---

Target:	XP05
Alternative Name:	XP05 ( <a href="#">XP05 Products</a> )
Background:	This gene encodes a member of the karyopherin family that is required for the transport of small RNAs and double-stranded RNA-binding proteins from the nucleus to the cytoplasm. The encoded protein translocates cargo through the nuclear pore complex in a RanGTP-dependent process.,XP05,exp5,Epigenetics & Nuclear Signaling,RNA Binding,Nuclear Receptor Signaling,Signal Transduction,XP05
Molecular Weight:	136 kDa
Gene ID:	57510
UniProt:	<a href="#">Q9HAV4</a>
Pathways:	<a href="#">Regulatory RNA Pathways</a> , <a href="#">Protein targeting to Nucleus</a>

## Application Details

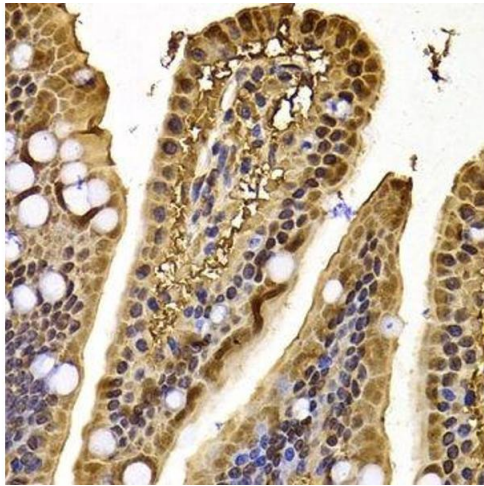
---

Application Notes:	WB,1:500 - 1:2000,IF,1:50 - 1:100,IP,1:50 - 1:200
Comment:	HIGH QUALITY
Restrictions:	For Research Use only

## Handling

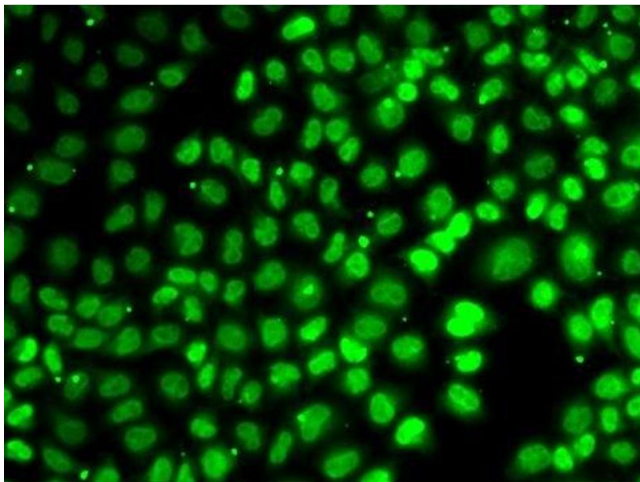
---

Format:	Liquid
Buffer:	PBS with 0.02 % sodium azide,50 % glycerol, pH 7.3.
Preservative:	Sodium azide
Precaution of Use:	This product contains Sodium azide: a POISONOUS AND HAZARDOUS SUBSTANCE which should be handled by trained staff only.
Storage:	-20 °C
Storage Comment:	Store at -20°C. Avoid freeze / thaw cycles.



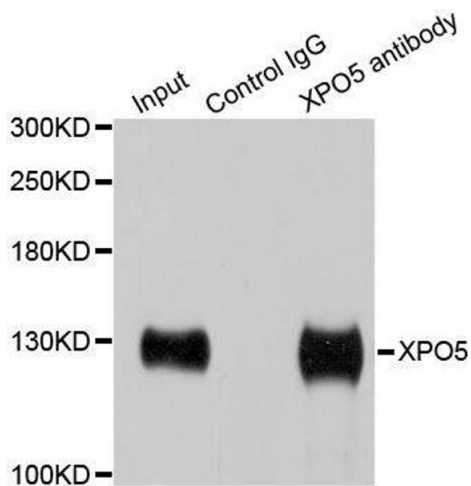
#### Immunohistochemistry (Paraffin-embedded Sections)

**Image 1.** Immunohistochemistry of paraffin-embedded mouse jejunum using XPO5 antibody.



#### Immunofluorescence

**Image 2.** Immunofluorescence analysis of MCF7 cells using XPO5 antibody.



#### Immunoprecipitation

**Image 3.** Immunoprecipitation analysis of 200ug extracts of HeLa cells using 1ug XPO5 antibody.

Please check the [product details page](#) for more images. Overall 5 images are available for ABIN6150299.