

Datasheet for ABIN6150328
anti-YBX1 antibody (AA 100-200)[Go to Product page](#)

7 Images

Overview

Quantity:	100 µL
Target:	YBX1
Binding Specificity:	AA 100-200
Reactivity:	Human
Host:	Rabbit
Clonality:	Polyclonal
Conjugate:	This YBX1 antibody is un-conjugated
Application:	Western Blotting (WB), Immunohistochemistry (IHC), Immunofluorescence (IF)

Product Details

Immunogen:	A synthetic peptide corresponding to a sequence within amino acids 100-200 of human YB-1/YB-1/YBX1 (NP_004550.2).
Sequence:	LRSVGDGETV EFDVVEGEKG AEAANVTGPG GVPVQGSKYA ADRNHYRRYP RRRGPPRNYQ QNYQNSESGE KNEGSESAPE GQAQRRPYR RRRFPPYYMR R
Isotype:	IgG
Cross-Reactivity:	Human, Mouse, Rat
Characteristics:	Polyclonal Antibodies

Target Details

Target:	YBX1
---------	------

Target Details

Alternative Name:	YBX1 (YBX1 Products)
Background:	<p>This gene encodes a highly conserved cold shock domain protein that has broad nucleic acid binding properties. The encoded protein functions as both a DNA and RNA binding protein and has been implicated in numerous cellular processes including regulation of transcription and translation, pre-mRNA splicing, DNA repair and mRNA packaging. This protein is also a component of messenger ribonucleoprotein (mRNP) complexes and may have a role in microRNA processing. This protein can be secreted through non-classical pathways and functions as an extracellular mitogen. Aberrant expression of the gene is associated with cancer proliferation in numerous tissues. This gene may be a prognostic marker for poor outcome and drug resistance in certain cancers. Alternate splicing results in multiple transcript variants. Pseudogenes of this gene are found on multiple chromosomes.,YBX1,BP-8,CBF-A,CSDA2,CSDB,DBPB,EFI-A,MDR-NF1,NSEP-1,NSEP1,YB-1,YB1,Epigenetics & Nuclear Signaling,Transcription Factors,RNA Binding,Cell Biology & Developmental Biology,Stem Cells,Embryonic Stem Cells,YBX1</p>
Molecular Weight:	35 kDa
Gene ID:	4904
UniProt:	P67809
Pathways:	Regulation of Muscle Cell Differentiation

Application Details

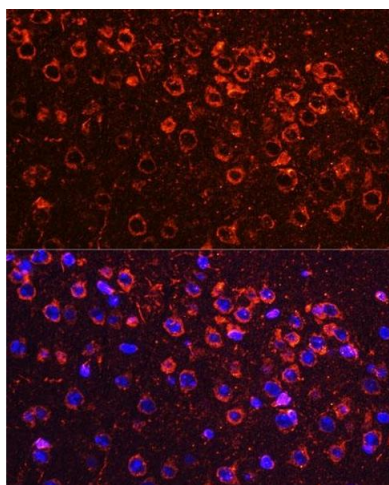
Application Notes:	WB,1:500 - 1:2000,IHC,1:100 - 1:200,IF,1:50 - 1:200
Comment:	HIGH QUALITY
Restrictions:	For Research Use only

Handling

Format:	Liquid
Buffer:	PBS with 0.02 % sodium azide,50 % glycerol, pH 7.3.
Preservative:	Sodium azide
Precaution of Use:	This product contains Sodium azide: a POISONOUS AND HAZARDOUS SUBSTANCE which should be handled by trained staff only.
Storage:	-20 °C

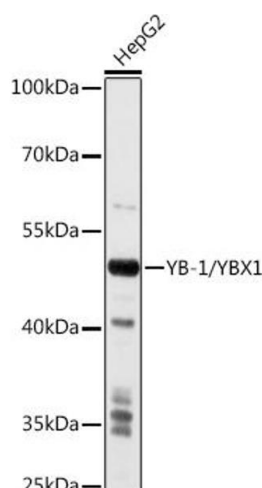
Storage Comment: Store at -20°C. Avoid freeze / thaw cycles.

Images



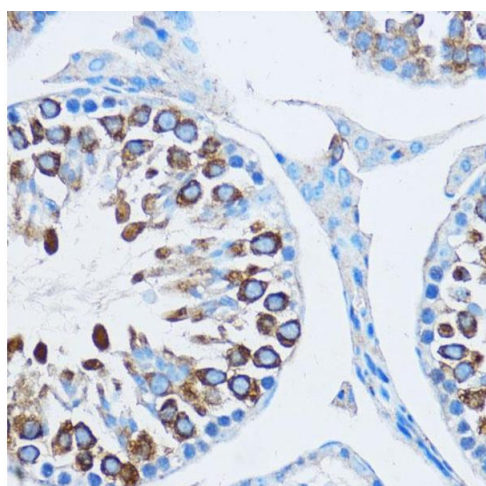
Immunofluorescence

Image 1. Immunofluorescence analysis of mouse brain using YB-1/YB-1/YBX1 antibody (ABIN6134494, ABIN6150328, ABIN6150330 and ABIN7101815) at dilution of 1:100. Blue: DAPI for nuclear staining.



Western Blotting

Image 2. Western blot analysis of extracts of HepG2 cells, using YB-1/YB-1/YBX1 antibody (ABIN6134494, ABIN6150328, ABIN6150330 and ABIN7101815) at 1:1000 dilution. Secondary antibody: HRP Goat Anti-Rabbit IgG (H+L) (ABIN1684268 and ABIN3020597) at 1:10000 dilution. Lysates/proteins: 25 µg per lane. Blocking buffer: 3 % nonfat dry milk in TBST. Detection: ECL Basic Kit (RM00020). Exposure time: 10s.



Immunohistochemistry

Image 3. Immunohistochemistry of paraffin-embedded mouse testis using YB-1/YB-1/YBX1 antibody (ABIN6134494, ABIN6150328, ABIN6150330 and ABIN7101815) at dilution of 1:100 (40x lens). Perform microwave antigen retrieval with 10 mM PBS buffer pH 7.2 before commencing with IHC staining protocol.

Please check the [product details page](#) for more images. Overall 7 images are available for ABIN6150328.