

Datasheet for ABIN6150331
anti-GAS41 antibody (AA 1-227)



[Go to Product page](#)

7 Images

Overview

Quantity:	100 µL
Target:	GAS41
Binding Specificity:	AA 1-227
Reactivity:	Human
Host:	Rabbit
Clonality:	Polyclonal
Conjugate:	This GAS41 antibody is un-conjugated
Application:	Western Blotting (WB), Immunofluorescence (IF), Immunohistochemistry (IHC)

Product Details

Immunogen:	Recombinant fusion protein containing a sequence corresponding to amino acids 1-227 of human YEATS4 (NP_006521.1).
Sequence:	MFKRMAEFGP DSGGRVKGVT IVKPIVYGNV ARYFGKKREE DGHTHQWTVY VKPYRNEDMS AYVKKIQFKL HESYGNPLRV VTKPPYEITE TGWGEFEIII KIFFIDPNER PVTLYHLLKL FQSDTNAMLG KKTIVSEFYD EMIFQDPTAM MQQLLTTSRQ LTLGAYKHET EFAELVKTR EKLEAAKKKT SFEIAELKER LKASRETINC LKNEIRKLEE DDQAKDI
Isotype:	IgG
Cross-Reactivity:	Human, Mouse, Rat
Characteristics:	Polyclonal Antibodies

Target Details

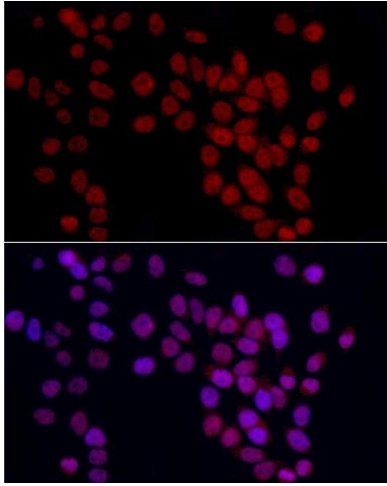
Target:	GAS41
Alternative Name:	YEATS4 (GAS41 Products)
Background:	<p>The protein encoded by this gene is found in the nucleoli. It has high sequence homology to human MLLT1, and yeast and human MLLT3 proteins. Both MLLT1 and MLLT3 proteins belong to a class of transcription factors, indicating that the encoded protein might also represent a transcription factor. This protein is thought to be required for RNA transcription. This gene has been shown to be amplified in tumors. Alternative splicing results in multiple transcript variants encoding different isoforms.,YEATS4,4930573H17Rik,B230215M10Rik,GAS41,NUBI-1,YAF9,Epigenetics & Nuclear Signaling,Transcription Factors,Cell Biology & Developmental Biology,Apoptosis,YEATS4</p>
Molecular Weight:	26 kDa
Gene ID:	8089
UniProt:	O95619

Application Details

Application Notes:	WB,1:500 - 1:2000,IHC,1:50 - 1:200,IF,1:50 - 1:200
Comment:	HIGH QUALITY
Restrictions:	For Research Use only

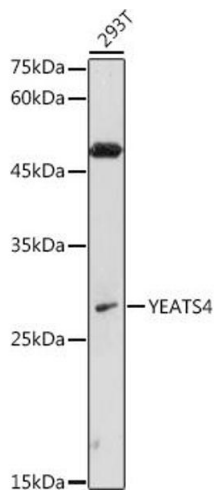
Handling

Format:	Liquid
Buffer:	PBS with 0.02 % sodium azide,50 % glycerol, pH 7.3.
Preservative:	Sodium azide
Precaution of Use:	This product contains Sodium azide: a POISONOUS AND HAZARDOUS SUBSTANCE which should be handled by trained staff only.
Storage:	-20 °C
Storage Comment:	Store at -20°C. Avoid freeze / thaw cycles.



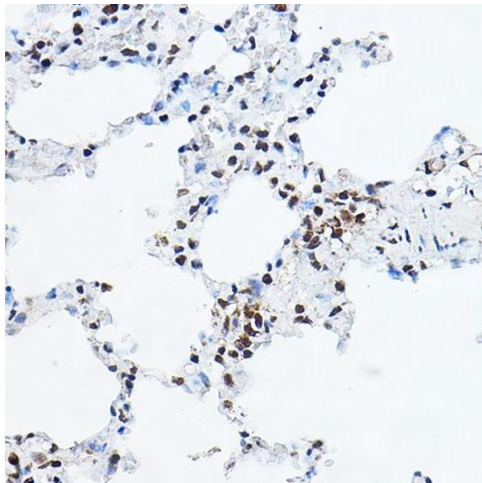
Immunofluorescence

Image 1. Immunofluorescence analysis of HeLa cells using YE Rabbit pAb (ABIN6130808, ABIN6150331, ABIN6150332 and ABIN6221925) at dilution of 1:50 (40x lens). Blue: DAPI for nuclear staining.



Western Blotting

Image 2. Western blot analysis of extracts of 293T cells, using YE antibody (ABIN6130808, ABIN6150331, ABIN6150332 and ABIN6221925) at 1:1000 dilution. Secondary antibody: HRP Goat Anti-Rabbit IgG (H+L) (ABIN1684268 and ABIN3020597) at 1:10000 dilution. Lysates/proteins: 25 µg per lane. Blocking buffer: 3 % nonfat dry milk in TBST. Detection: ECL Enhanced Kit (RM00021). Exposure time: 180s.



Immunohistochemistry

Image 3. Immunohistochemistry of paraffin-embedded rat lung using YE Rabbit pAb (ABIN6130808, ABIN6150331, ABIN6150332 and ABIN6221925) at dilution of 1:100 (40x lens). Perform high pressure antigen retrieval with 10 mM citrate buffer pH 6.0 before commencing with IHC staining protocol.

Please check the [product details page](#) for more images. Overall 7 images are available for ABIN6150331.