

Datasheet for ABIN6150398  
**anti-ZC3H15 antibody (AA 1-300)**



[Go to Product page](#)

1 Image

Overview

Quantity:	100 µL
Target:	ZC3H15
Binding Specificity:	AA 1-300
Reactivity:	Human
Host:	Rabbit
Clonality:	Polyclonal
Conjugate:	This ZC3H15 antibody is un-conjugated
Application:	Western Blotting (WB)

Product Details

Immunogen:	Recombinant fusion protein containing a sequence corresponding to amino acids 1-300 of human ZC3H15 (NP_060941.2).
Sequence:	MPPKKQAQAG GSKKAEQKKK EKIIEDKTFG LKNKKGAKQQ KFIKAVTHQV KFGQQNPRQV AQSEAEKCLK KDDKKKELQE LNELFKPVVA AQKISKGADP KSVVCAFFKQ GQCTKGDCKK FSHDLTLERK CEKRSVYIDA RDEELEKDTM DNWDEKKLEE VVNKKHGEAE KKKPKTQIVC KHFLEAIENN KYGFWVCPG GGDICMYRHA LPPGFVLKGD KKKEEKEDI SLEDLIERER SALGPNVTKI TLESFLAWKK RKRQEKIDKL EQDMERRKAD FKAGKALVIS GREVFEFRPE
Isotype:	IgG
Cross-Reactivity:	Human, Mouse
Characteristics:	Polyclonal Antibodies

## Target Details

---

Target:	ZC3H15
Alternative Name:	ZC3H15 ( <a href="#">ZC3H15 Products</a> )
Background:	Protects DRG1 from proteolytic degradation. Stimulates DRG1 GTPase activity likely by increasing the affinity for the potassium ions.,ZC3H15,HT010,LEREPO4,MSTP012,Epigenetics & Nuclear Signaling,RNA Binding,ZC3H15
Molecular Weight:	18 kDa/48 kDa
Gene ID:	55854
UniProt:	<a href="#">Q8WU90</a>

## Application Details

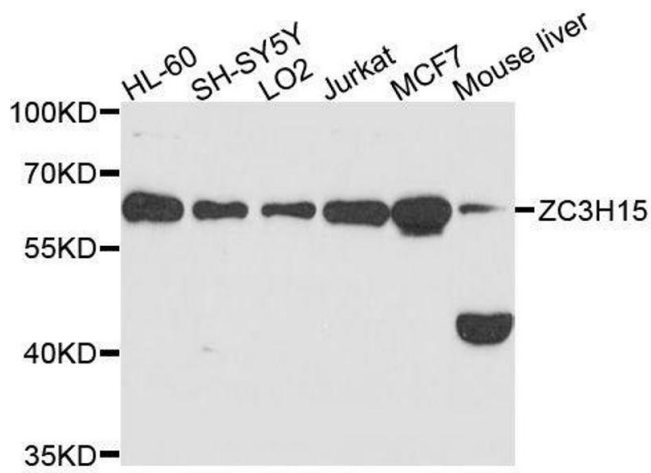
---

Application Notes:	WB,1:500 - 1:2000
Comment:	HIGH QUALITY
Restrictions:	For Research Use only

## Handling

---

Format:	Liquid
Buffer:	PBS with 0.02 % sodium azide,50 % glycerol, pH 7.3.
Preservative:	Sodium azide
Precaution of Use:	This product contains Sodium azide: a POISONOUS AND HAZARDOUS SUBSTANCE which should be handled by trained staff only.
Storage:	-20 °C
Storage Comment:	Store at -20°C. Avoid freeze / thaw cycles.



### Western Blotting

**Image 1.** Western blot analysis of extracts of various cell lines, using ZC3H15 antibody.