



[Go to Product page](#)

Datasheet for ABIN6150412
anti-ZCWPW1 antibody (AA 389-648)

1 Image

Overview

Quantity:	100 µL
Target:	ZCWPW1
Binding Specificity:	AA 389-648
Reactivity:	Human
Host:	Rabbit
Clonality:	Polyclonal
Conjugate:	This ZCWPW1 antibody is un-conjugated
Application:	Western Blotting (WB)

Product Details

Immunogen:	Recombinant fusion protein containing a sequence corresponding to amino acids 389-648 of human ZCWPW1 (NP_060454.3).
Sequence:	VMKKRRNDCS QKLGVALMMA QEAEQISIQE RVNLFGRFWSR FNGSNSNGER KDLQLSGLNS PGSCLEKKEK EEELEKEEGE KTDPIPIRK RVKIQTQTK PRGLGGDAGT ADGRGRTLQR KIMKRSLGRK STAPPAPRMG RKEGQGNSDS DQPGPKKKFK APQSKALAAS FSEGKEVRTV PKNLGLSACK GACPSSAKEE PRHREPLTQE AGSVPLEDEA SSDLDLEQLM EDVGRELQGS GELQHSNSDG EDFPVALFGK
Isotype:	IgG
Cross-Reactivity:	Human, Mouse
Characteristics:	Polyclonal Antibodies

Target Details

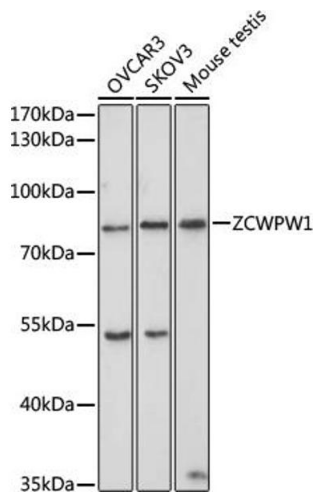
Target:	ZCWPW1
Alternative Name:	ZCWPW1 (ZCWPW1 Products)
Background:	Dual histone methylation reader specific for PRDM9-catalyzed histone marks (H3K4me3 and H3K36me3. Facilitates the repair of PRDM9-induced meiotic double-strand breaks (DSBs) (By similarity. Essential for male fertility and spermatogenesis (By similarity. Required for meiosis prophase I progression in male but not in female germ cells (By similarity. ZCWPW1, ZCW1, Epigenetics & Nuclear Signaling, Cell Biology & Developmental Biology, ZCWPW1
Molecular Weight:	45 kDa/52 kDa/53 kDa/59 kDa/72 kDa
Gene ID:	55063
UniProt:	Q9H0M4

Application Details

Application Notes:	WB, 1:500 - 1:2000
Comment:	HIGH QUALITY
Restrictions:	For Research Use only

Handling

Format:	Liquid
Buffer:	PBS with 0.02 % sodium azide, 50 % glycerol, pH 7.3.
Preservative:	Sodium azide
Precaution of Use:	This product contains Sodium azide: a POISONOUS AND HAZARDOUS SUBSTANCE which should be handled by trained staff only.
Storage:	-20 °C
Storage Comment:	Store at -20°C. Avoid freeze / thaw cycles.



Western Blotting

Image 1. Western blot analysis of extracts of various cell lines, using ZCWPW1 antibody (ABIN6133087, ABIN6150412, ABIN6150413 and ABIN6223508) at 1:1000 dilution. Secondary antibody: HRP Goat Anti-Rabbit IgG (H+L) (ABIN1684268 and ABIN3020597) at 1:10000 dilution. Lysates/proteins: 25 µg per lane. Blocking buffer: 3 % nonfat dry milk in TBST. Detection: ECL Basic Kit (RM00020). Exposure time: 30s.