



[Go to Product page](#)

Datasheet for ABIN6150442
anti-ZFYVE9 antibody (AA 1-260)

1 Image

Overview

Quantity:	100 µL
Target:	ZFYVE9
Binding Specificity:	AA 1-260
Reactivity:	Human
Host:	Rabbit
Clonality:	Polyclonal
Conjugate:	This ZFYVE9 antibody is un-conjugated
Application:	Western Blotting (WB)

Product Details

Immunogen:	Recombinant fusion protein containing a sequence corresponding to amino acids 1-260 of human ZFYVE9 (NP_004790.2).
Sequence:	MENYFQAEAY NLDKVLDEFE QNEDETVSST LLDTKWNKIL DPPSHRLSFN PTLASVNESAVSNESQPQLK VFSLAHSAPL TTEEDHCAN GQDCNLNPEI ATMWIDENAV AEDQLIKRNY SWDDQCSAVE VGEKKCGNLA CLPDEKNVLV VAVMHNCDKR TLQNDLQDCN NYNSQSLMDA FSCSLDNENR QTDQFSFSIN ESTEKDMNSE KQMDPLNRPK TEGRSVNHLC PTSSDSLASV CSPSQLKDDG SIGRDPSMSA
Isotype:	IgG
Cross-Reactivity:	Human
Characteristics:	Polyclonal Antibodies

Target Details

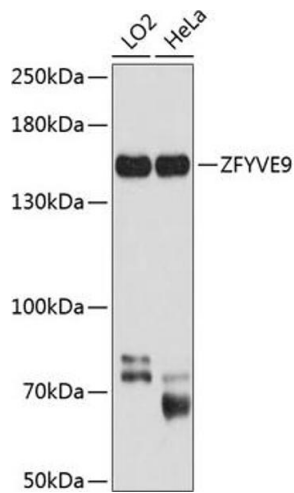
Target:	ZFYVE9
Alternative Name:	ZFYVE9 (ZFYVE9 Products)
Background:	This gene encodes a double zinc finger motif-containing protein that participates in the transforming growth factor-beta (TGFB) signalling pathway. The encoded protein interacts directly with SMAD2 and SMAD3, and recruits SMAD2 to the TGFB receptor. There are multiple pseudogenes for this gene on chromosomes 2, 15, and X. Alternative splicing results in multiple transcript variants.,ZFYVE9,MADHIP,NSP,PPP1R173,SARA,SMADIP,Epigenetics & Nuclear Signaling,Signal Transduction,Cell Biology & Developmental Biology,Growth factor,TGF-b-Smad Signaling Pathway,ESC Pluripotency and Differentiation,Regulator,ZFYVE9
Molecular Weight:	83 kDa/150 kDa/156 kDa
Gene ID:	9372
UniProt:	O95405
Pathways:	Protein targeting to Nucleus

Application Details

Application Notes:	WB,1:200 - 1:2000
Comment:	HIGH QUALITY
Restrictions:	For Research Use only

Handling

Format:	Liquid
Buffer:	PBS with 0.02 % sodium azide,50 % glycerol, pH 7.3.
Preservative:	Sodium azide
Precaution of Use:	This product contains Sodium azide: a POISONOUS AND HAZARDOUS SUBSTANCE which should be handled by trained staff only.
Storage:	-20 °C
Storage Comment:	Store at -20°C. Avoid freeze / thaw cycles.



Western Blotting

Image 1. Western blot analysis of extracts of various cell lines, using ZFYVE9 antibody (ABIN6133286, ABIN6150442, ABIN6150443 and ABIN6224871) at 1:1000 dilution. Secondary antibody: HRP Goat Anti-Rabbit IgG (H+L) (ABIN1684268 and ABIN3020597) at 1:10000 dilution. Lysates/proteins: 25 μ g per lane. Blocking buffer: 3% nonfat dry milk in TBST. Detection: ECL Basic Kit (RM00020). Exposure time: 20s.