



[Go to Product page](#)

Datasheet for ABIN6150473  
**anti-ZNF20 antibody (AA 1-200)**

3 Images

Overview

Quantity:	100 µL
Target:	ZNF20
Binding Specificity:	AA 1-200
Reactivity:	Human
Host:	Rabbit
Clonality:	Polyclonal
Conjugate:	This ZNF20 antibody is un-conjugated
Application:	Western Blotting (WB), Immunohistochemistry (IHC), Immunofluorescence (IF)

Product Details

Immunogen:	Recombinant fusion protein containing a sequence corresponding to amino acids 1-200 of human ZNF20 (NP_066966.2).
Sequence:	MMFQDSVAFE DVAVSFTQEE WALLDPSQKN LYRDVMQETF KNLTSVGKTW KVQNIIEDEYK NPRRNLSLMR EKLCEKESH HCGESFNQIA DDMLNRKTLP GITPCESSVC GEVGTGHSSL NTHIRADTGH KSSEYQEYGE NPYRNKECKK AFSYLDSFQS HDKACTKEKP YDGKECTETF ISHSCIQRHR VMHSGDGPYK
Isotype:	IgG
Cross-Reactivity:	Human, Mouse, Rat
Characteristics:	Polyclonal Antibodies

## Target Details

---

Target:	ZNF20
Alternative Name:	ZNF20 ( <a href="#">ZNF20 Products</a> )
Background:	May be involved in transcriptional regulation.,ZNF20,KOX13,Epigenetics & Nuclear Signaling,Transcription Factors,ZNF20
Molecular Weight:	61 kDa
Gene ID:	7568
UniProt:	<a href="#">P17024</a>

## Application Details

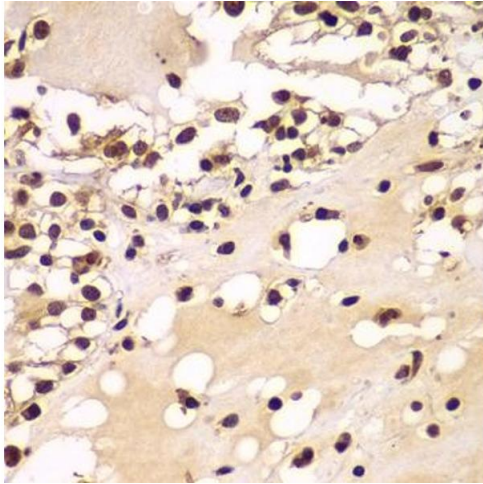
---

Application Notes:	WB,1:500 - 1:2000,IHC,1:50 - 1:200,IF,1:50 - 1:200
Comment:	HIGH QUALITY
Restrictions:	For Research Use only

## Handling

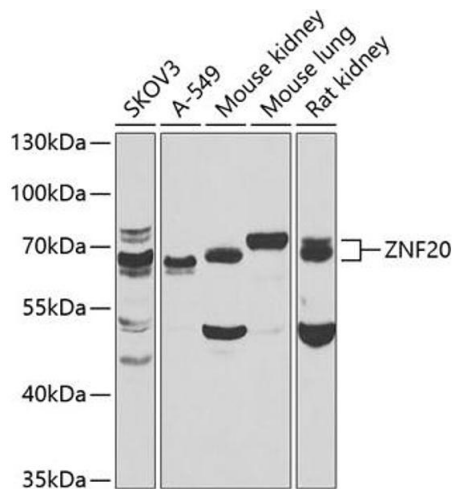
---

Format:	Liquid
Buffer:	PBS with 0.02 % sodium azide,50 % glycerol, pH 7.3.
Preservative:	Sodium azide
Precaution of Use:	This product contains Sodium azide: a POISONOUS AND HAZARDOUS SUBSTANCE which should be handled by trained staff only.
Storage:	-20 °C
Storage Comment:	Store at -20°C. Avoid freeze / thaw cycles.



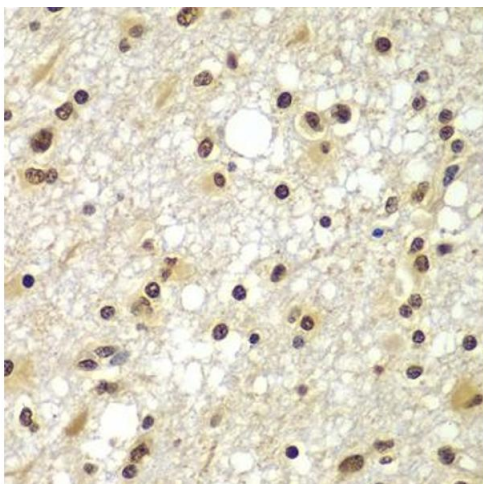
### Immunohistochemistry

**Image 1.** Immunohistochemistry of paraffin-embedded human kidney cancer using ZNF20 antibody at dilution of 1:100 (40x lens). Perform microwave antigen retrieval with 10 mM PBS buffer pH 7.2 before commencing with IHC staining protocol.



### Western Blotting

**Image 2.** Western blot analysis of extracts of various cell lines, using ZNF20 antibody at 1:1000 dilution. Secondary antibody: HRP Goat Anti-Rabbit IgG (H+L) (ABIN1684268 and ABIN3020597) at 1:10000 dilution. Lysates/proteins: 25 µg per lane. Blocking buffer: 3% nonfat dry milk in TBST. Detection: ECL Basic Kit (RM00020). Exposure time: 30s.



### Immunohistochemistry

**Image 3.** Immunohistochemistry of paraffin-embedded human brain cancer using ZNF20 antibody at dilution of 1:100 (40x lens). Perform microwave antigen retrieval with 10 mM PBS buffer pH 7.2 before commencing with IHC staining protocol.