



[Go to Product page](#)

Datasheet for ABIN6150520
anti-ZNF581 antibody (AA 1-90)

7 Images

Overview

Quantity:	100 µL
Target:	ZNF581
Binding Specificity:	AA 1-90
Reactivity:	Human
Host:	Rabbit
Clonality:	Polyclonal
Conjugate:	This ZNF581 antibody is un-conjugated
Application:	Immunohistochemistry (IHC), Western Blotting (WB), Immunofluorescence (IF)

Product Details

Immunogen:	Recombinant fusion protein containing a sequence corresponding to amino acids 1-90 of human ZNF581 (NP_057619.1).
Sequence:	MLVLPSPCPQ PLAFSSVETM EGPPRRTCERS PEPGPSSSIG SPQASSPPRP NHYLLIDTQG VPYTVLVDEE SQREPGASGA PGQKKCYSCP
Isotype:	IgG
Cross-Reactivity:	Human, Mouse, Rat
Characteristics:	Polyclonal Antibodies

Target Details

Target:	ZNF581
---------	--------

Target Details

Alternative Name:	ZNF581 (ZNF581 Products)
Background:	May be involved in transcriptional regulation.,ZNF581,HSPC189,Epigenetics & Nuclear Signaling,ZNF581
Molecular Weight:	22 kDa
Gene ID:	51545
UniProt:	Q9P0T4

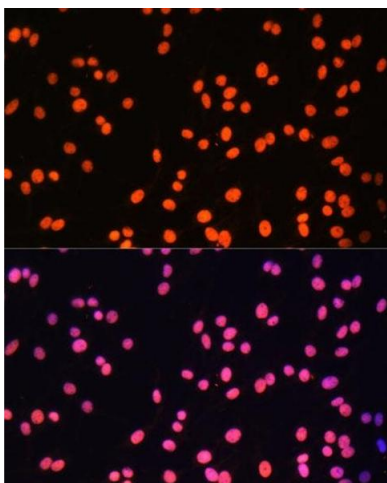
Application Details

Application Notes:	WB,1:1000 - 1:2000,IHC,1:50 - 1:200,IF,1:50 - 1:200
Restrictions:	For Research Use only

Handling

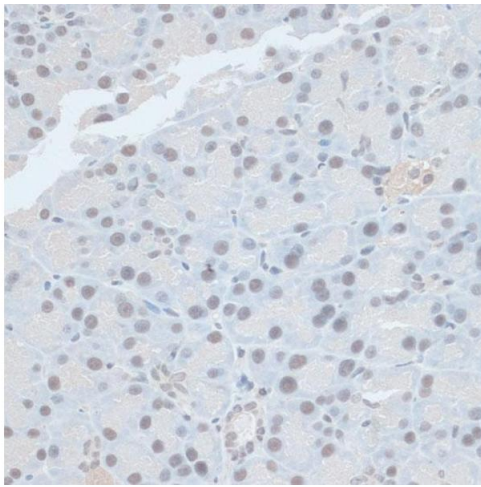
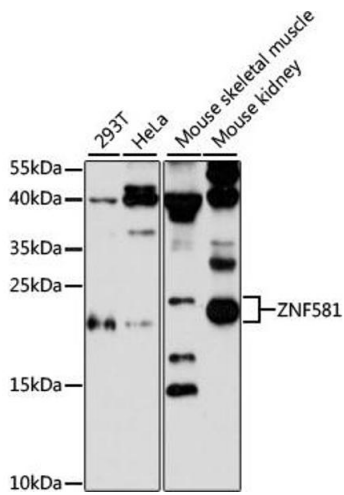
Format:	Liquid
Buffer:	PBS with 0.02 % sodium azide,50 % glycerol, pH 7.3.
Preservative:	Sodium azide
Precaution of Use:	This product contains Sodium azide: a POISONOUS AND HAZARDOUS SUBSTANCE which should be handled by trained staff only.
Storage:	-20 °C
Storage Comment:	Store at -20°C. Avoid freeze / thaw cycles.

Images



Immunofluorescence

Image 1. Immunofluorescence analysis of C6 cells using ZNF581 Polyclonal Antibody (ABIN6128960, ABIN6150520, ABIN6150521 and ABIN6217055) at dilution of 1:100 (40x lens). Blue: DAPI for nuclear staining.



Western Blotting

Image 2. Western blot analysis of extracts of various cell lines, using ZNF581 antibody (ABIN6128960, ABIN6150520, ABIN6150521 and ABIN6217055) at 1:3000 dilution. Secondary antibody: HRP Goat Anti-Rabbit IgG (H+L) (ABIN1684268 and ABIN3020597) at 1:10000 dilution. Lysates/proteins: 25 µg per lane. Blocking buffer: 3 % nonfat dry milk in TBST. Detection: ECL Enhanced Kit (RM00021). Exposure time: 90s.

Immunohistochemistry

Image 3. Immunohistochemistry of paraffin-embedded rat pancreas using ZNF581 antibody (ABIN6128960, ABIN6150520, ABIN6150521 and ABIN6217055) at dilution of 1:100 (40x lens). Perform microwave antigen retrieval with 10 mM PBS buffer pH 7.2 before commencing with IHC staining protocol.

Please check the [product details page](#) for more images. Overall 7 images are available for ABIN6150520.