

Datasheet for ABIN615168
anti-ALDOC antibody (C-Term)



[Go to Product page](#)

2 Images

Overview

Quantity:	0.2 mL
Target:	ALDOC
Binding Specificity:	C-Term
Reactivity:	Human, Mouse
Host:	Rabbit
Clonality:	Polyclonal
Conjugate:	This ALDOC antibody is un-conjugated
Application:	Western Blotting (WB), Immunohistochemistry (Paraffin-embedded Sections) (IHC (p)), Enzyme Immunoassay (EIA)

Product Details

Immunogen:	ALDOC antibody was raised against kLH conjugated synthetic peptide selected from the C-terminal region of Human ALDOC. Epitope: C-Terminus Genename: ALDOC
Specificity:	This antibody detects Aldolase C/ALDOC (C-term).
Cross-Reactivity (Details):	Species reactivity (expected):Mouse. Species reactivity (tested):Human.
Purification:	Ammonium Sulfate Precipitation

Target Details

Target:	ALDOC
Alternative Name:	Aldolase C / ALDOC (ALDOC Products)

Target Details

Background: ALDOC is a member of the fructose-biphosphate aldolase protein family. Expressed specifically in the hippocampus and Purkinje cells of the brain, this protein is a glycolytic enzyme that catalyzes the reversible aldol cleavage of fructose-1,6-biphosphate and fructose 1-phosphate to dihydroxyacetone phosphate and either glyceraldehyde-3-phosphate or glyceraldehyde, respectively. Synonyms: ALDC, Brain-type aldolase, Fructose-bisphosphate aldolase C

Gene ID: 230

NCBI Accession: [NP_005156](#)

UniProt: [P09972](#)

Application Details

Application Notes: Optimal working dilution should be determined by the investigator.

Restrictions: For Research Use only

Handling

Concentration: 0.25 mg/mL

Buffer: PBS containing 0.09 % Sodium Azide as preservative

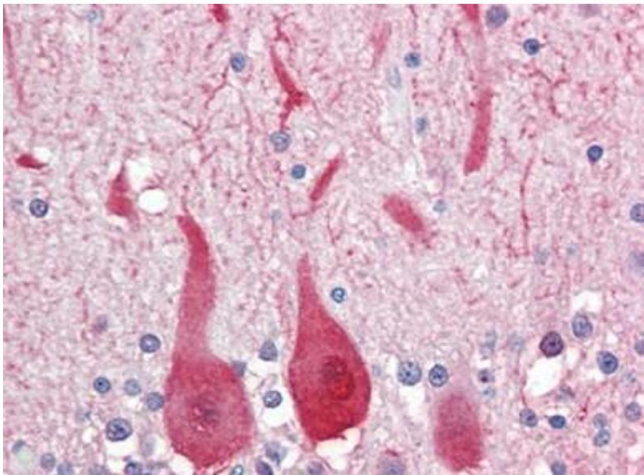
Preservative: Sodium azide

Precaution of Use: This product contains sodium azide: a POISONOUS AND HAZARDOUS SUBSTANCE which should be handled by trained staff only.

Handling Advice: Avoid repeated freezing and thawing.

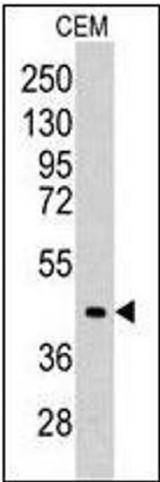
Storage: 4 °C/-20 °C

Storage Comment: Store the antibody undiluted at 2-8 °C for one month or (in aliquots) at -20 °C for longer.



Immunohistochemistry (Paraffin-embedded Sections)

Image 1. Human Brain, Cerebellum (formalin-fixed, paraffin-embedded) stained with ALDOC followed by biotinylated goat anti-rabbit IgG secondary antibody, alkaline phosphatase-streptavidin and chromogen.



Western Blotting

Image 2. Western blot analysis of CEM cell line lysates (35 µg/lane).