

Datasheet for ABIN615370
anti-CUEDC2 antibody (C-Term)[Go to Product page](#)

4 Images

Overview

Quantity:	50 µg
Target:	CUEDC2
Binding Specificity:	C-Term
Reactivity:	Human
Host:	Rabbit
Clonality:	Polyclonal
Conjugate:	This CUEDC2 antibody is un-conjugated
Application:	Western Blotting (WB), Immunohistochemistry (Paraffin-embedded Sections) (IHC (p)), Immunofluorescence (IF), Enzyme Immunoassay (EIA)

Product Details

Immunogen:	CUEDC2 antibody was raised against CUEDC2 antibody was raised against a 19 amino acid peptide from near the carboxy terminus of human CUEDC2.
Specificity:	This antibody reacts to CUE Domain Containing 2 (CUEDC2).
Purification:	Immunoaffinity Chromatography

Target Details

Target:	CUEDC2
Alternative Name:	CUEDC2 (CUEDC2 Products)
Background:	Synonyms: C10orf66, CUE domain-containing protein 2, HOYS6

Target Details

Gene ID:	79004
NCBI Accession:	NP_076945
UniProt:	Q9H467

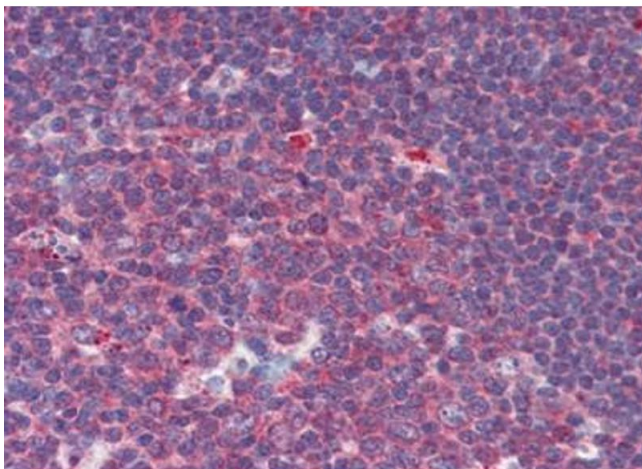
Application Details

Application Notes:	Optimal working dilution should be determined by the investigator.
Restrictions:	For Research Use only

Handling

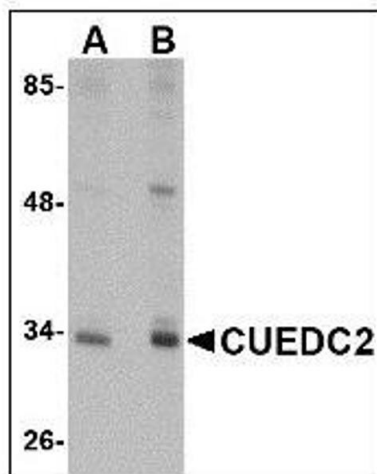
Concentration:	1,0 mg/mL
Buffer:	PBS containing 0.02 % sodium azide
Preservative:	Sodium azide
Precaution of Use:	This product contains sodium azide: a POISONOUS AND HAZARDOUS SUBSTANCE which should be handled by trained staff only.
Handling Advice:	Avoid repeated freezing and thawing.
Storage:	4 °C/-20 °C
Storage Comment:	Store the antibody undiluted at 2-8 °C for one month or (in aliquots) at -20 °C for longer.

Images



Immunohistochemistry (Paraffin-embedded Sections)

Image 1. Human Tonsil: Formalin-Fixed, Paraffin-Embedded (FFPE)



Western Blotting

Image 2. Western blot analysis of CUEDC2 in HeLa cell lysate with CUEDC2 antibody at (A) 1 and (B) 2 $\mu\text{g/ml}$



Immunofluorescence

Image 3. Immunocytochemistry in HeLa cells with CUEDC2 antibody at 5 $\mu\text{g/ml}$.

Please check the [product details page](#) for more images. Overall 4 images are available for ABIN615370.