

Datasheet for ABIN615627

anti-CCL28 antibody

4 Images

[Go to Product page](#)

Overview

Quantity:	50 µg
Target:	CCL28
Reactivity:	Human
Host:	Rabbit
Clonality:	Polyclonal
Conjugate:	This CCL28 antibody is un-conjugated
Application:	Western Blotting (WB), Enzyme Immunoassay (EIA), Immunofluorescence (IF)

Product Details

Immunogen:	Highly pure recombinant Human MEC.
Specificity:	Recognizes Human MEC. Other species not tested.
Purification:	Affinity Chromatography employing an immobilized Human MEC matrix.

Target Details

Target:	CCL28
Alternative Name:	MEC / CCL28 (CCL28 Products)
Background:	CCL28, also known as chemokine (C-C motif) ligand 28 or mucosae-associated epithelial chemokine (MEC), belongs to the subfamily of small cytokine CC proteins. CCL28 is expressed by columnar epithelial cells in the gut, lung, breast and the salivary glands and drives the mucosal homing of T and B lymphocytes that express CCR10, and the migration of eosinophils expressing CCR3. This chemokine is constitutively expressed in the colon, but its levels can be

Target Details

increased by pro-inflammatory cytokines and certain bacterial products implying a role in effector cell recruitment to sites of epithelial injury. Synonyms: C-C motif chemokine 28, Mucosae-associated epithelial chemokine, Protein CCK1, SCYA28, Small-inducible cytokine A28

Gene ID: 56477

NCBI Accession: [NP_683513](#)

UniProt: [Q9NRJ3](#)

Application Details

Application Notes: Optimal working dilution should be determined by the investigator.

Restrictions: For Research Use only

Handling

Reconstitution: Centrifuge vial prior to opening. Restore in sterile water to a concentration of 0.1-1.0 mg/mL.

Buffer: PBS, pH 7.2 without preservatives

Preservative: Without preservative

Handling Advice: Avoid repeated freezing and thawing.

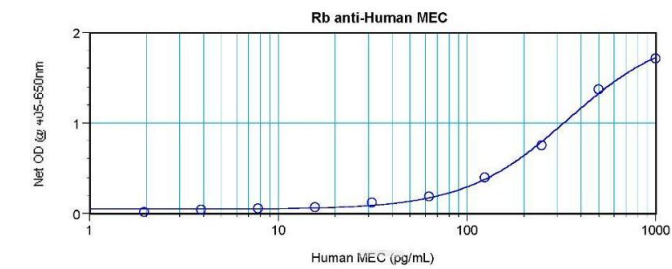
Storage: -20 °C

Storage Comment: Store the lyophilized antibody at -20 °C. Following reconstitution it is stable for two weeks at 2-8 °C. Frozen aliquots are stable for 6 months when stored at -20 °C.

Expiry Date: 6 months

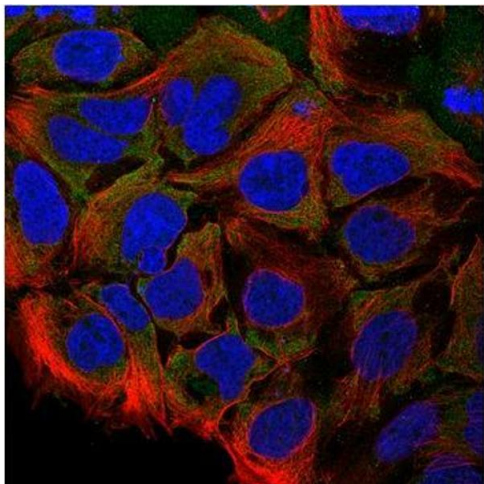
Enzyme Immunoassay

Image 1. Sandwich ELISA using MEC / CCL28 antibody



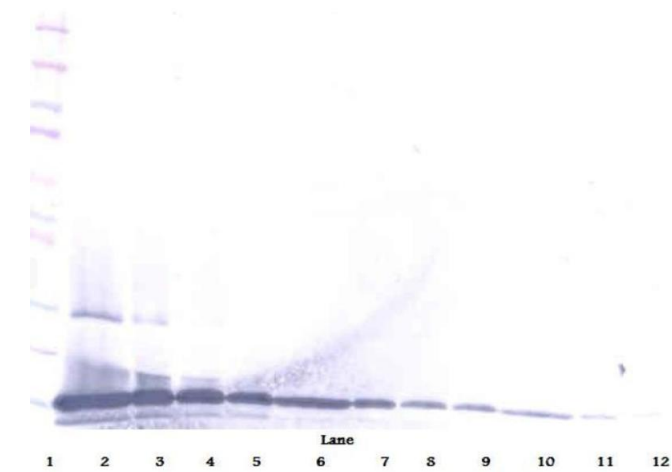
Immunofluorescence

Image 2. Immunofluorescence: This antibody stained CACO-2 cells. The primary antibody was incubated at 3.0 mg/ml overnight at 4°C followed by a fluorescent labeled secondary antibody. *Information and photo are courtesy of the Cell Profiling group, SciLifeLab Stockholm.*



Western Blotting

Image 3. Western Blot (Reduced) using MEC / CCL28 antibody



Please check the [product details page](#) for more images. Overall 4 images are available for ABIN615627.