

Datasheet for ABIN615725
anti-BCAS1 antibody (C-Term)

3 Images

[Go to Product page](#)

Overview

Quantity:	50 µg
Target:	BCAS1
Binding Specificity:	C-Term
Reactivity:	Human
Host:	Rabbit
Clonality:	Polyclonal
Conjugate:	This BCAS1 antibody is un-conjugated
Application:	Western Blotting (WB), Immunohistochemistry (Paraffin-embedded Sections) (IHC (p)), Enzyme Immunoassay (EIA)

Product Details

Immunogen:	BCAS1 antibody was raised against synthetic peptide - KLH conjugated Genename: BCAS1
Specificity:	This antibody reacts to the c-term of Breast Carcinoma Amplified Sequence 1 (BCAS1) protein.
Purification:	Immunoaffinity Chromatography

Target Details

Target:	BCAS1
Alternative Name:	BCAS1 / NABC1 (BCAS1 Products)
Background:	Synonyms: AIBC1, Breast carcinoma-amplified sequence 1
Gene ID:	8537

Target Details

NCBI Accession: [NP_003648](#)

UniProt: [O75363](#)

Application Details

Application Notes: Optimal working dilution should be determined by the investigator.

Restrictions: For Research Use only

Handling

Concentration: 1,0 mg/mL

Buffer: PBS containing 0.02 % sodium azide as preservative

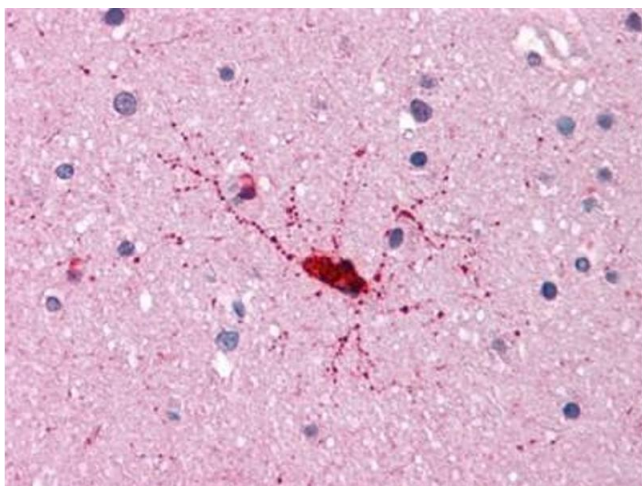
Preservative: Sodium azide

Precaution of Use: This product contains sodium azide: a POISONOUS AND HAZARDOUS SUBSTANCE which should be handled by trained staff only.

Storage: 4 °C

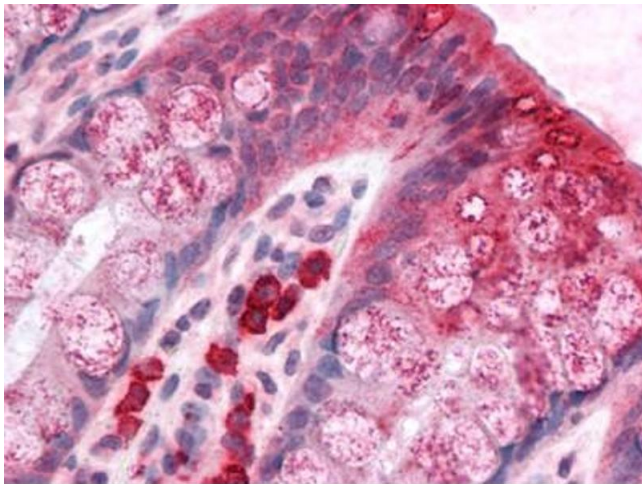
Storage Comment: Store the antibody undiluted at 2-8 °C.

Images



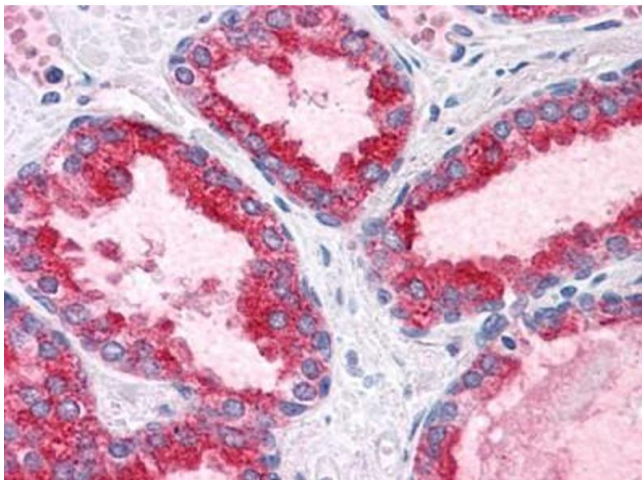
Immunohistochemistry (Paraffin-embedded Sections)

Image 1. Human Brain, Cortex: Formalin-Fixed, Paraffin-Embedded (FFPE)



Immunohistochemistry (Paraffin-embedded Sections)

Image 2. Human Colon: Formalin-Fixed, Paraffin-Embedded (FFPE)



Immunohistochemistry (Paraffin-embedded Sections)

Image 3. Human Prostate: Formalin-Fixed, Paraffin-Embedded (FFPE)