

Datasheet for ABIN615789
anti-SLFN12 antibody (C-Term)

3 Images

[Go to Product page](#)

Overview

Quantity:	50 µg
Target:	SLFN12
Binding Specificity:	C-Term
Reactivity:	Human
Host:	Rabbit
Clonality:	Polyclonal
Conjugate:	This SLFN12 antibody is un-conjugated
Application:	Western Blotting (WB), Immunohistochemistry (Paraffin-embedded Sections) (IHC (p)), Enzyme Immunoassay (EIA)

Product Details

Immunogen:	Peptide near the carboxy terminus of human SLFN12 Genename: SLFN12
Specificity:	This antibody reacts to the C-term of Schlafen Family Member 12 (SLFN12).
Purification:	Immunoaffinity Chromatography

Target Details

Target:	SLFN12
Alternative Name:	SLFN12 (SLFN12 Products)
Background:	Synonyms: Schlafen 12, Schlafen family member 12, Schlafen12
Gene ID:	55106

Target Details

NCBI Accession: [NP_060512](#)

UniProt: [Q8IYM2](#)

Application Details

Application Notes: Optimal working dilution should be determined by the investigator.

Restrictions: For Research Use only

Handling

Concentration: 1,0 mg/mL

Buffer: PBS containing 0.02 % sodium azide as preservative

Preservative: Sodium azide

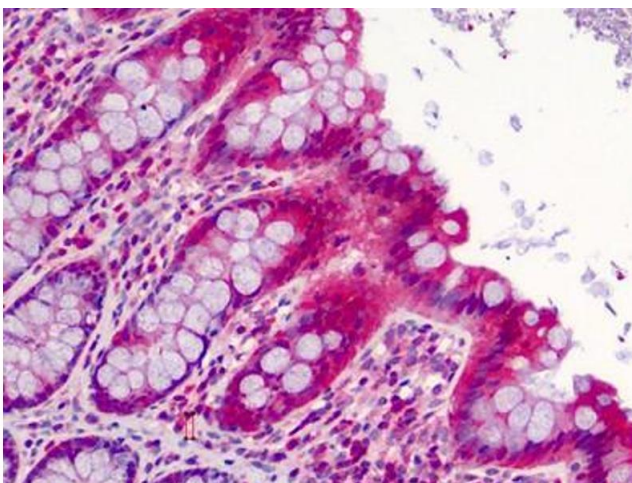
Precaution of Use: This product contains sodium azide: a POISONOUS AND HAZARDOUS SUBSTANCE which should be handled by trained staff only.

Handling Advice: Avoid repeated freezing and thawing.

Storage: 4 °C/-20 °C

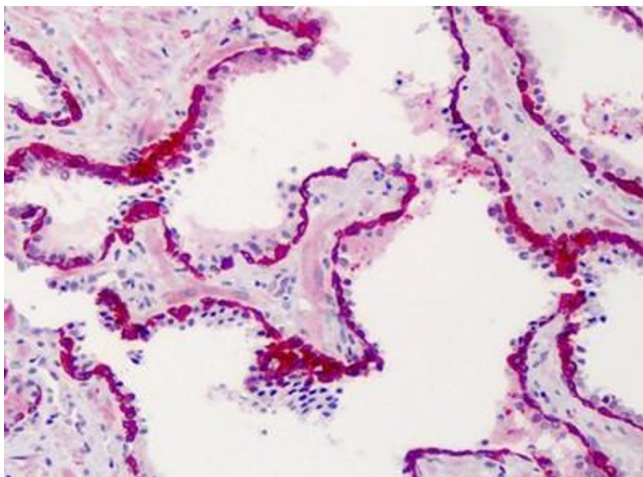
Storage Comment: Store the antibody undiluted at 2-8 °C for one month or (in aliquots) at -20 °C for longer.

Images



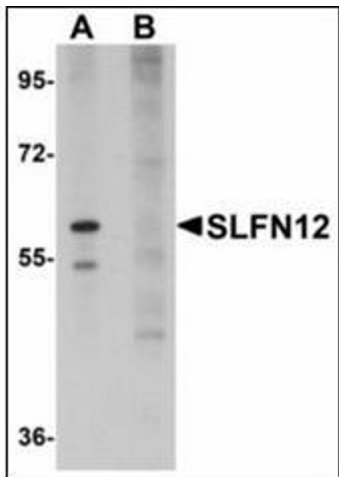
Immunohistochemistry (Paraffin-embedded Sections)

Image 1. Human Colon: Formalin-Fixed, Paraffin-Embedded (FFPE)



Immunohistochemistry (Paraffin-embedded Sections)

Image 2. Human Prostate: Formalin-Fixed, Paraffin-Embedded (FFPE)



Western Blotting

Image 3. Western blot analysis of SLFN12 in SK-N-SH cell lysate with SLFN12 antibody at 1 µg/ml in (A) the absence and (B) the presence of blocking peptide.