



[Go to Product page](#)

Datasheet for ABIN615823  
**anti-TLR7 antibody (AA 900-950)**

3 Images

Overview

Quantity:	50 µg
Target:	TLR7
Binding Specificity:	AA 900-950
Reactivity:	Human, Mouse, Rat, Dog, Cow, Monkey, Horse
Host:	Rabbit
Clonality:	Polyclonal
Conjugate:	This TLR7 antibody is un-conjugated
Application:	Western Blotting (WB), Immunohistochemistry (Paraffin-embedded Sections) (IHC (p))

Product Details

Immunogen:	Synthetic peptide - KLH conjugated, A portion of amino acids 900-950 of human TLR7 Genename: TLR7
Isotype:	IgG
Specificity:	This antibody reacts to Toll-like Receptor 7 (TLR7).
Purification:	Protein G Chromatography

Target Details

Target:	TLR7
Alternative Name:	TLR7 ( <a href="#">TLR7 Products</a> )
Background:	Toll-like receptors (TLRs) are signaling molecules that recognize different microbial products

## Target Details

---

during infection and serve as an important link between the innate and adaptive immune responses. These proteins act through adaptor molecules such as MyD88 and TIRAP to activate various kinases and transcription factors. TLR7, like TLRs 3, 8, and 9, is localized in intracellular acidic compartments such as the phagolysosome and will recognize some single-stranded RNA viruses such as vesicular stomatitis virus (VSV) and influenza virus. Activation of TLR7 by VSV results in stimulation of the immune response including IFN $\alpha$  secretion, suggesting the importance of TLR7 in virus recognition. Synonyms: Toll-like receptor 7

Gene ID: 51284

NCBI Accession: [NP\\_057646](#)

UniProt: [Q9NYK1](#)

Pathways: [TLR Signaling](#), [Activation of Innate immune Response](#), [Toll-Like Receptors Cascades](#)

## Application Details

---

Application Notes: Optimal working dilution should be determined by the investigator.

Restrictions: For Research Use only

## Handling

---

Concentration: 0,5 mg/mL

Buffer: PBS containing 0.2 % gelatin and 0.05 % sodium azide as preservative

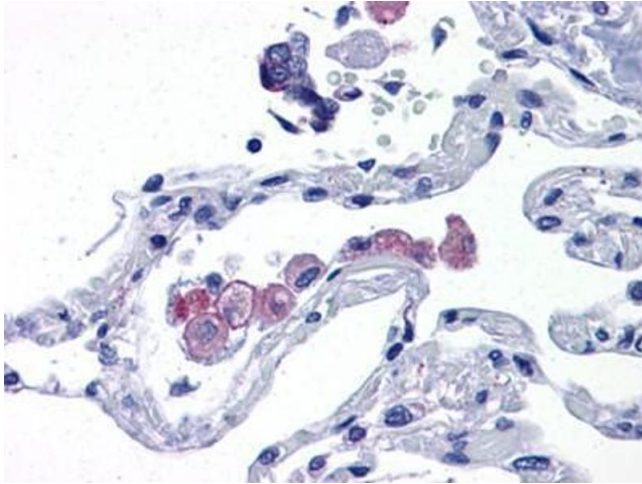
Preservative: Sodium azide

Precaution of Use: This product contains sodium azide: a POISONOUS AND HAZARDOUS SUBSTANCE which should be handled by trained staff only.

Handling Advice: Avoid repeated freezing and thawing.

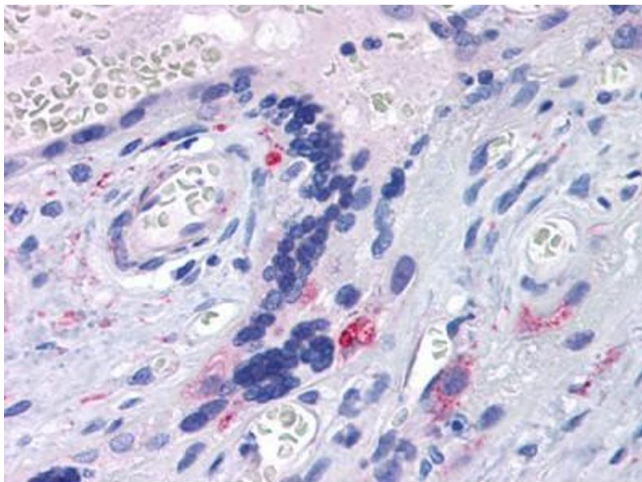
Storage: 4 °C/-20 °C

Storage Comment: Store the antibody undiluted at 2-8 °C for one month or (in aliquots) at -20 °C for longer.



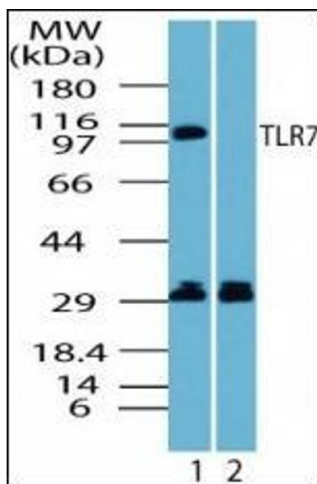
### Immunohistochemistry (Paraffin-embedded Sections)

**Image 1.** Human Lung: Formalin-Fixed, Paraffin-Embedded (FFPE)



### Immunohistochemistry (Paraffin-embedded Sections)

**Image 2.** Human Placenta: Formalin-Fixed, Paraffin-Embedded (FFPE)



### Western Blotting

**Image 3.** Western blot analysis of human TLR7 in Ramos cell lysate in the 1) absence and 2) presence of immunizing peptide using antibody at 1  $\mu$ g/ml.