



[Go to Product page](#)

Datasheet for ABIN615826

anti-Isocitrate Dehydrogenase antibody

3 Images

Overview

Quantity:	50 µL
Target:	Isocitrate Dehydrogenase (IDH)
Reactivity:	Human
Host:	Rabbit
Clonality:	Polyclonal
Conjugate:	This Isocitrate Dehydrogenase antibody is un-conjugated
Application:	Western Blotting (WB), Immunohistochemistry (Paraffin-embedded Sections) (IHC (p))

Product Details

Immunogen:	Recombinant human IDH1 protein Genename: IDH1
Specificity:	This antibody reacts to human Putative Cytosolic NADp-dependent Isocitrate Dehydrogenase (IDH1). Predicted cross-reactivity based on amino acid sequence homology: mouse (96 %), rat (97 %), bovine (95 %), zebrafish (85 %).
Purification:	Immunoaffinity Chromatography

Target Details

Target:	Isocitrate Dehydrogenase (IDH)
Alternative Name:	Isocitrate Dehydrogenase / IDH (IDH Products)
Background:	Synonyms: Cytosolic NADP-isocitrate dehydrogenase, ICDH, IDP, NADP(+)-specific ICDH, Oxalosuccinate decarboxylase, PICD, cytoplasmic Isocitrate dehydrogenase [NADP]
Gene ID:	3417

Target Details

NCBI Accession: [NP_005887](#)

UniProt: [O75874](#)

Application Details

Application Notes: Optimal working dilution should be determined by the investigator.

Restrictions: For Research Use only

Handling

Format: Liquid

Concentration: 1,0 mg/mL

Buffer: 0.1 M Tris-glycine, pH 7.0 containing 10 % Glycerol and 0.01 % Thimerosal

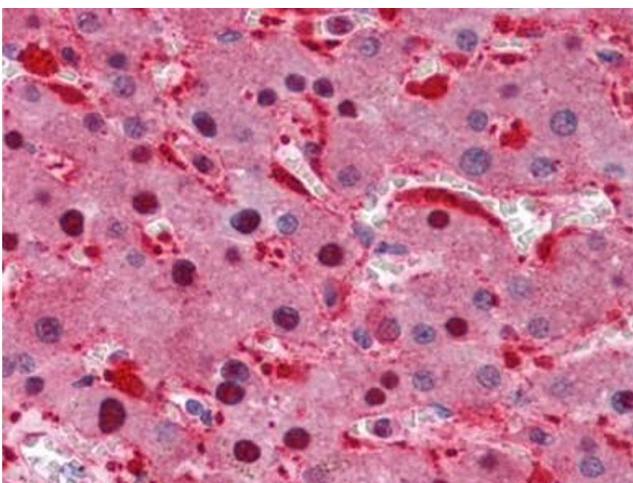
Preservative: Thimerosal (Merthiolate)

Precaution of Use: This product contains thimerosal (merthiolate): a POISONOUS AND HAZARDOUS SUBSTANCE which should be handled by trained staff only.

Handling Advice: Avoid repeated freezing and thawing.

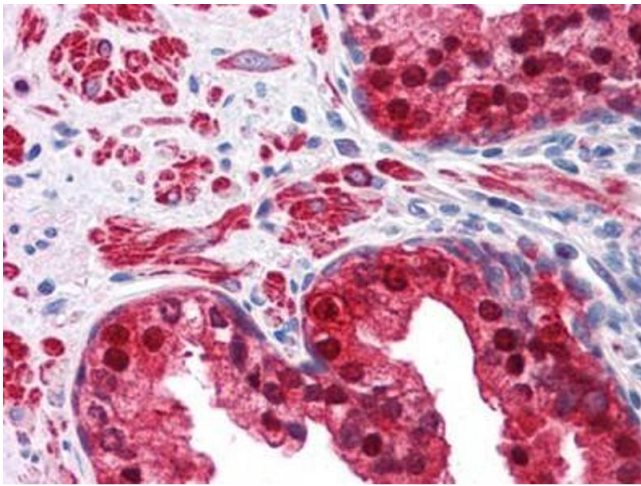
Storage: -20 °C

Images



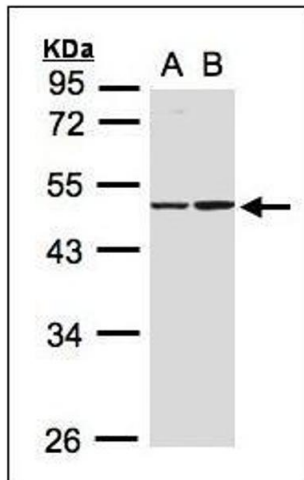
Immunohistochemistry (Paraffin-embedded Sections)

Image 1. Human Liver: Formalin-Fixed, Paraffin-Embedded (FFPE)



Immunohistochemistry (Paraffin-embedded Sections)

Image 2. Human Prostate: Formalin-Fixed, Paraffin-Embedded (FFPE)



Western Blotting

Image 3. Sample(30 ug whole cell lysate). A:A431. B:Raji. 10% SDS PAGE. IDH1 antibody diluted at 1/1000