

Datasheet for ABIN615857

anti-Aryl Hydrocarbon Receptor antibody (N-Term)

4 Images

[Go to Product page](#)

Overview

Quantity:	50 µg
Target:	Aryl Hydrocarbon Receptor (AHR)
Binding Specificity:	N-Term
Reactivity:	Human, Mouse, Rat
Host:	Rabbit
Clonality:	Polyclonal
Conjugate:	This Aryl Hydrocarbon Receptor antibody is un-conjugated
Application:	Western Blotting (WB), Immunohistochemistry (Paraffin-embedded Sections) (IHC (p)), Immunofluorescence (IF), Enzyme Immunoassay (EIA)

Product Details

Immunogen:	Synthetic AhR peptide - KLH conjugated Genename: AHR
Isotype:	IgG
Specificity:	AhR Antibody detects endogenous levels of total AhR protein.
Purification:	Immunoaffinity Chromatography

Target Details

Target:	Aryl Hydrocarbon Receptor (AHR)
Alternative Name:	Ah Receptor (AhR) (AHR Products)
Background:	Aryl hydrocarbon receptor is a ligand-activated transcription factor involved in the regulation of

Target Details

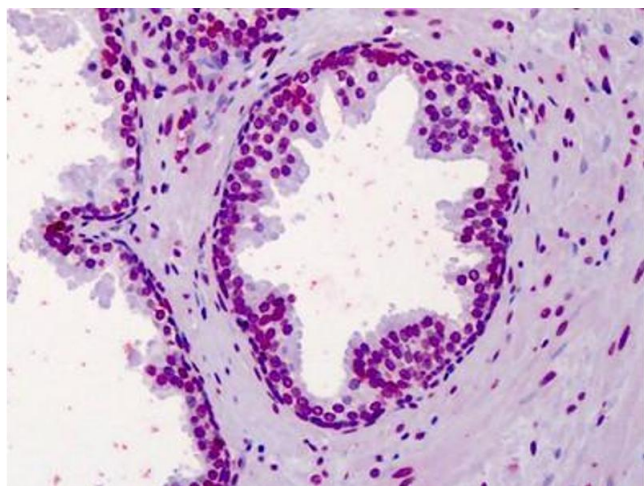
	biological responses to planar aromatic hydrocarbons. AHR has been shown to regulate xenobiotic-metabolizing enzymes such as cytochrome P450.Synonyms: AHR, Aryl hydrocarbon receptor, BHLHE76
Gene ID:	196
NCBI Accession:	NP_001612
UniProt:	P35869
Pathways:	Regulation of Cell Size

Application Details

Application Notes:	Optimal working dilution should be determined by the investigator.
Restrictions:	For Research Use only

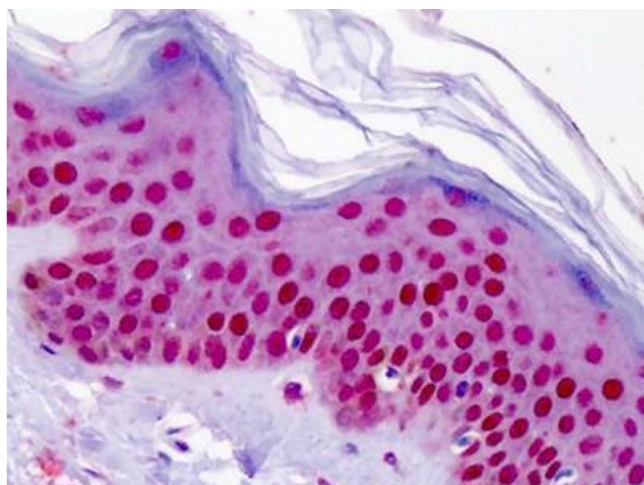
Handling

Concentration:	1,0 mg/mL
Buffer:	PBS (without Mg ²⁺ , Ca ²⁺), pH 7.4 containing 150 mM sodium chloride, 0.02 % sodium azide as preservative and 50 % glycerol as stabilizer
Preservative:	Sodium azide
Precaution of Use:	This product contains sodium azide: a POISONOUS AND HAZARDOUS SUBSTANCE which should be handled by trained staff only.
Handling Advice:	Avoid repeated freezing and thawing.
Storage:	-20 °C



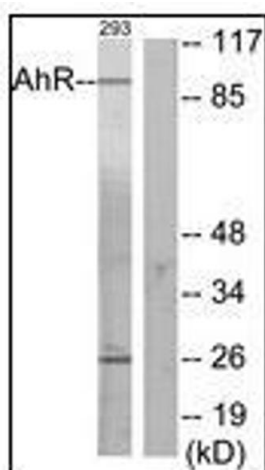
Immunohistochemistry (Paraffin-embedded Sections)

Image 1. Human Prostate: Formalin-Fixed, Paraffin-Embedded (FFPE)



Immunohistochemistry (Paraffin-embedded Sections)

Image 2. Human Skin: Formalin-Fixed, Paraffin-Embedded (FFPE)



Western Blotting

Image 3. Western blot analysis of extracts from 293 cells, using AhR Antibody. The lane on the right is treated with the synthesized peptide.

Please check the [product details page](#) for more images. Overall 4 images are available for ABIN615857.