

## Datasheet for ABIN615860

**anti-STEAP4 antibody**

## 3 Images

[Go to Product page](#)

## Overview

Quantity:	50 µg
Target:	STEAP4
Reactivity:	Human
Host:	Rabbit
Clonality:	Polyclonal
Application:	Immunofluorescence (IF), Immunohistochemistry (Paraffin-embedded Sections) (IHC (p)), Enzyme Immunoassay (EIA)

## Product Details

Immunogen:	STEAP4 antibody was raised against synthetic peptide - KLH conjugated Genename: STEAP4
Isotype:	IgG
Specificity:	STEAP4 Antibody detects endogenous levels of total STEAP4 protein.
Purification:	Immunoaffinity Chromatography

## Target Details

Target:	STEAP4
Alternative Name:	STEAP4 ( <a href="#">STEAP4 Products</a> )
Background:	Synonyms: Metalloreductase STEAP4, STAMP2, STEAP-4, Six-transmembrane epithelial antigen of prostate 4, SixTransMembrane protein of prostate 2, TNFAIP9, Tumor necrosis factor, alpha-induced protein 9
Gene ID:	79689

## Target Details

NCBI Accession:	<a href="#">NP_078912</a>
UniProt:	<a href="#">Q687X5</a>
Pathways:	<a href="#">Transition Metal Ion Homeostasis</a>

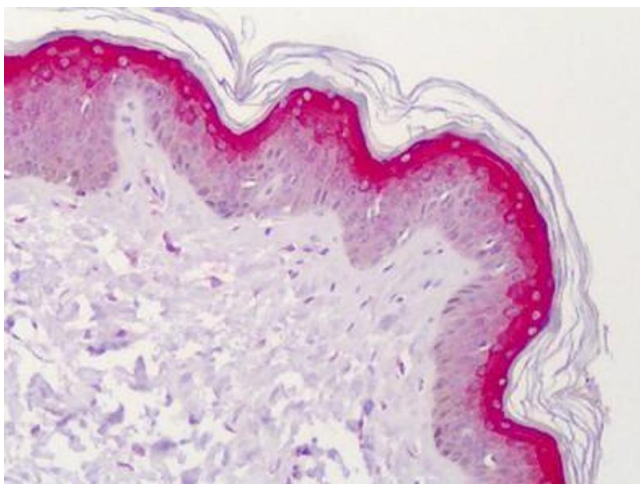
## Application Details

Application Notes:	Optimal working dilution should be determined by the investigator.
Restrictions:	For Research Use only

## Handling

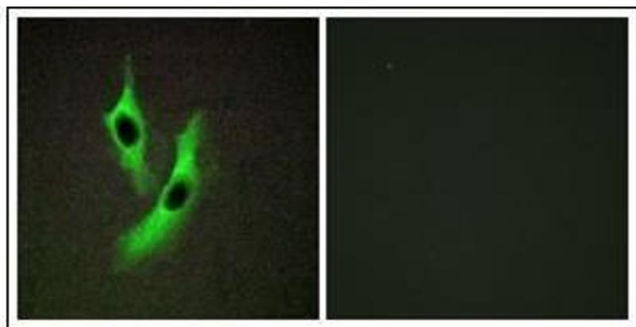
Concentration:	1,0 mg/mL
Buffer:	PBS (without Mg <sup>2+</sup> , Ca <sup>2+</sup> ), pH 7.4 containing 150 mM sodium chloride, 0.02 % sodium azide as preservative and 50 % glycerol as stabilizer
Preservative:	Sodium azide
Precaution of Use:	This product contains sodium azide: a POISONOUS AND HAZARDOUS SUBSTANCE which should be handled by trained staff only.
Handling Advice:	Avoid repeated freezing and thawing.
Storage:	-20 °C

## Images



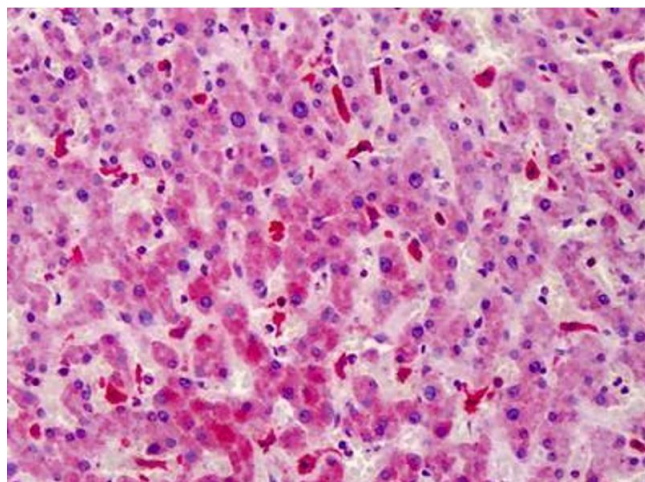
### Immunohistochemistry (Paraffin-embedded Sections)

**Image 1.** Human Skin: Formalin-Fixed, Paraffin-Embedded (FFPE)



#### Immunofluorescence

**Image 2.** Immunofluorescence analysis of HeLa cells, using STEAP4 Antibody. The picture on the right is treated with the synthesized peptide.



#### Immunohistochemistry (Paraffin-embedded Sections)

**Image 3.** Human Liver: Formalin-Fixed, Paraffin-Embedded (FFPE)