

Datasheet for ABIN615863
anti-ACTN3 antibody (N-Term)

2 Images



[Go to Product page](#)

Overview

| | |
|----------------------|--|
| Quantity: | 50 µg |
| Target: | ACTN3 |
| Binding Specificity: | N-Term |
| Reactivity: | Human, Mouse, Rat |
| Host: | Rabbit |
| Clonality: | Polyclonal |
| Conjugate: | This ACTN3 antibody is un-conjugated |
| Application: | Western Blotting (WB), Immunohistochemistry (Paraffin-embedded Sections) (IHC (p)), Enzyme Immunoassay (EIA) |

Product Details

| | |
|---------------|---|
| Immunogen: | ACTN3 antibody was raised against synthetic peptide - KLH conjugated Genename: ACTN3 |
| Isotype: | IgG |
| Specificity: | This antibody reacts to the N-term of Alpha-actinin 3, Skeletal Muscle Isoform (ACTN3). |
| Purification: | Immunoaffinity Chromatography |

Target Details

| | |
|-------------------|--|
| Target: | ACTN3 |
| Alternative Name: | alpha-Actinin-3 / ACTN3 (ACTN3 Products) |
| Background: | Alpha-actinin is an actin-binding protein with multiple roles in different cell types. ACTN3 |

Target Details

expression is limited to skeletal muscle. It is localized to the Z-disc and analogous dense bodies, where it helps to anchor the myofibrillar actin filaments. Synonyms: Alpha actinin skeletal muscle isoform 3, F-actin cross-linking protein

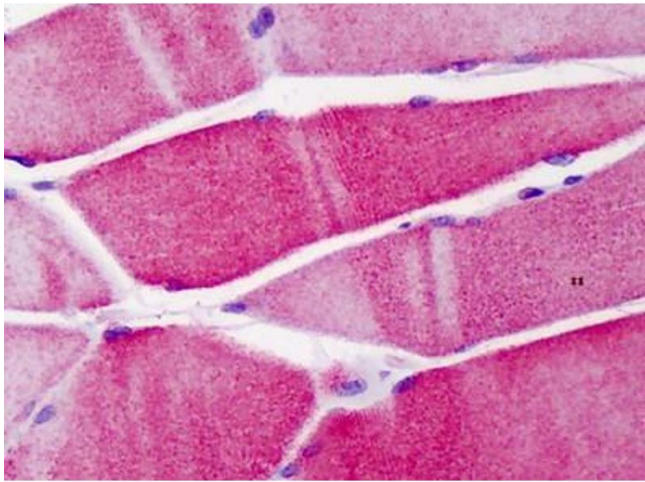
| | |
|-----------------|---|
| Gene ID: | 89 |
| NCBI Accession: | NP_001095 |
| UniProt: | Q08043 |
| Pathways: | Cell-Cell Junction Organization |

Application Details

| | |
|--------------------|--|
| Application Notes: | Optimal working dilution should be determined by the investigator. |
| Restrictions: | For Research Use only |

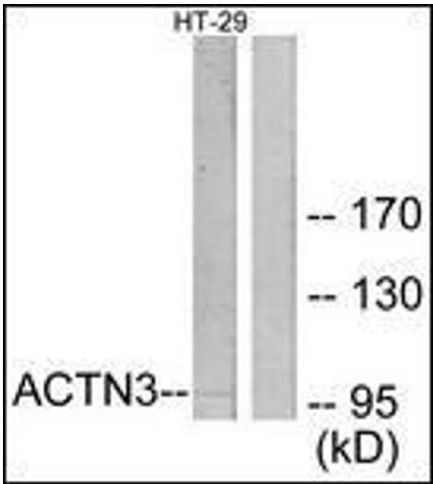
Handling

| | |
|--------------------|---|
| Concentration: | 1,0 mg/mL |
| Buffer: | PBS (without Mg ²⁺ , Ca ²⁺), pH 7.4 containing 150 mM sodium chloride, 0.02 % sodium azide as preservative and 50 % glycerol as stabilizer |
| Preservative: | Sodium azide |
| Precaution of Use: | This product contains sodium azide: a POISONOUS AND HAZARDOUS SUBSTANCE which should be handled by trained staff only. |
| Handling Advice: | Avoid repeated freezing and thawing. |
| Storage: | -20 °C |



Immunohistochemistry (Paraffin-embedded Sections)

Image 1. Human Skeletal Muscle: Formalin-Fixed, Paraffin-Embedded (FFPE)



Western Blotting

Image 2. Western blot analysis of extracts from HT-29 cells, using ACTN3 Antibody. The lane on the right is treated with the synthesized peptide.