

Datasheet for ABIN615865  
**anti-CXCR7 antibody (C-Term)**[Go to Product page](#)

## 4 Images

## Overview

Quantity:	50 µg
Target:	CXCR7
Binding Specificity:	C-Term
Reactivity:	Human, Mouse, Rat
Host:	Rabbit
Clonality:	Polyclonal
Conjugate:	This CXCR7 antibody is un-conjugated
Application:	Western Blotting (WB), Immunofluorescence (IF), Immunohistochemistry (Paraffin-embedded Sections) (IHC (p)), Enzyme Immunoassay (EIA)

## Product Details

Immunogen:	CXCR7 antibody was raised against synthetic peptide - KLH conjugated Genename: CXCR7
Isotype:	IgG
Specificity:	This antibody reacts to G Protein-Coupled Receptor RDC1 (CXCR7).
Purification:	Immunoaffinity Chromatography

## Target Details

Target:	CXCR7
Alternative Name:	CXCR7 / GPR159 ( <a href="#">CXCR7 Products</a> )
Background:	RDC1 was originally considered to be an Adrenomedullin receptor that binds calcitonin gene-

## Target Details

related peptide (CGRP) and adrenomedullin. RDC1 and GPRN1 represent two tissue-specific subtypes of the same 60-kD receptor. RDC1 has the structural characteristics of a chemokine receptor. Recently it has been shown that RDC1 binds to the chemokine CXCL12 and should be considered to be a chemokine receptor. Synonyms: C-X-C chemokine receptor type 7, CMKOR1, CXC-R7, CXCR-7, Chemokine orphan receptor 1, G-protein coupled receptor 159, G-protein coupled receptor RDC1 homolog, GPR-159, RDC1

Gene ID: 57007

NCBI Accession: [NP\\_064707](#)

UniProt: [P25106](#)

Pathways: [Myometrial Relaxation and Contraction](#), [Negative Regulation of intrinsic apoptotic Signaling](#)

## Application Details

Application Notes: Optimal working dilution should be determined by the investigator.

Restrictions: For Research Use only

## Handling

Concentration: 1,0 mg/mL

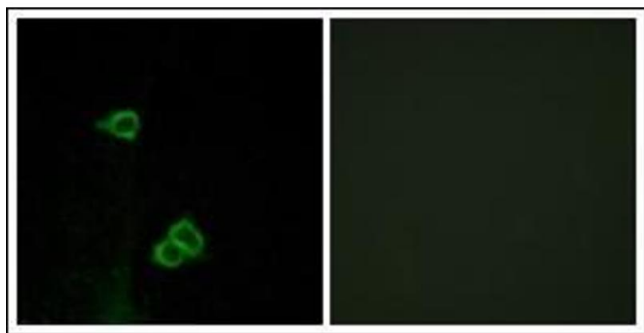
Buffer: PBS (without Mg<sup>2+</sup>, Ca<sup>2+</sup>), pH 7.4 containing 150 mM sodium chloride, 0.02 % sodium azide as preservative and 50 % glycerol as stabilizer

Preservative: Sodium azide

Precaution of Use: This product contains sodium azide: a POISONOUS AND HAZARDOUS SUBSTANCE which should be handled by trained staff only.

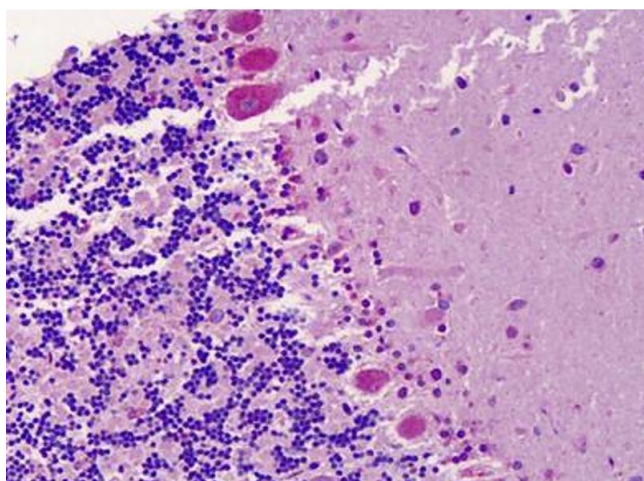
Handling Advice: Avoid repeated freezing and thawing.

Storage: -20 °C



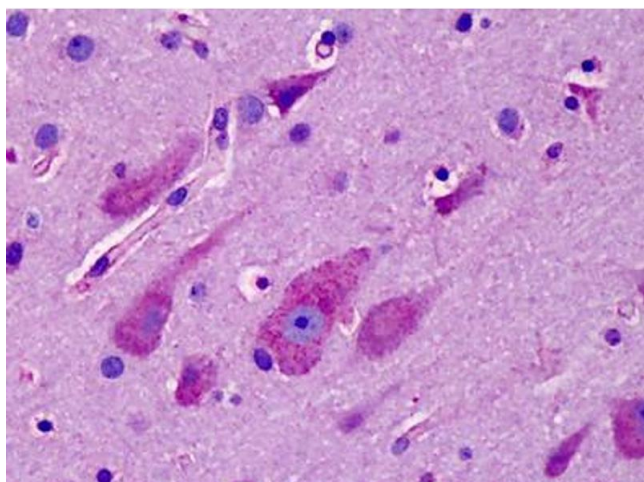
#### Immunofluorescence

**Image 1.** Immunofluorescence analysis of COS7 cells, using CXCR7 Antibody. The picture on the right is treated with the synthesized peptide.



#### Immunohistochemistry (Paraffin-embedded Sections)

**Image 2.** Human Brain, Cerebellum: Formalin-Fixed, Paraffin-Embedded (FFPE)



#### Immunohistochemistry (Paraffin-embedded Sections)

**Image 3.** Human Brain, Cortex: Formalin-Fixed, Paraffin-Embedded (FFPE)

Please check the [product details page](#) for more images. Overall 4 images are available for ABIN615865.