

Datasheet for ABIN615867
anti-SMO antibody (N-Term)[Go to Product page](#)

3 Images

Overview

Quantity:	50 µg
Target:	SMO
Binding Specificity:	N-Term
Reactivity:	Human, Mouse, Rat
Host:	Rabbit
Clonality:	Polyclonal
Conjugate:	This SMO antibody is un-conjugated
Application:	Western Blotting (WB), Immunohistochemistry (Paraffin-embedded Sections) (IHC (p)), Enzyme Immunoassay (EIA)

Product Details

Immunogen:	SMO antibody was raised against synthetic peptide - KLH conjugated Genename: SMO
Isotype:	IgG
Specificity:	This antibody reacts to the N-term of Smoothened Homolog (SMOH).
Purification:	Immunoaffinity Chromatography

Target Details

Target:	SMO
Alternative Name:	SMO (SMO Products)
Background:	Smoothened, a Frizzled Receptor, is homologous to the Drosophila segment polarity Smo gene.

Target Details

It associates with the Patched protein to mediate the cellular response to the Hedgehog secreted protein signal, which controls patterning and growth during vertebrate development. Smoothed is activated in a number of human tumors and can function as an oncogene in basal-cell carcinomas. Synonyms: Gx protein, SMOH, Smoothed homolog

Gene ID: 6608

NCBI Accession: [NP_005622](#)

UniProt: [Q99835](#)

Pathways: [Hedgehog Signaling](#)

Application Details

Application Notes: Optimal working dilution should be determined by the investigator.

Restrictions: For Research Use only

Handling

Concentration: 1,0 mg/mL

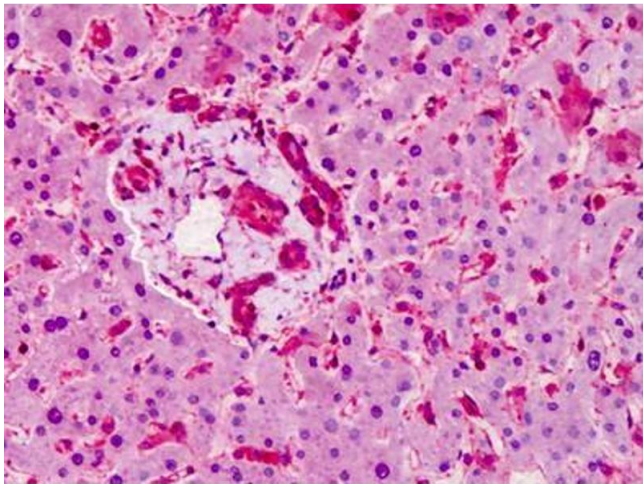
Buffer: PBS (without Mg²⁺, Ca²⁺), pH 7.4 containing 150 mM sodium chloride, 0.02 % sodium azide as preservative and 50 % glycerol as stabilizer

Preservative: Sodium azide

Precaution of Use: This product contains sodium azide: a POISONOUS AND HAZARDOUS SUBSTANCE which should be handled by trained staff only.

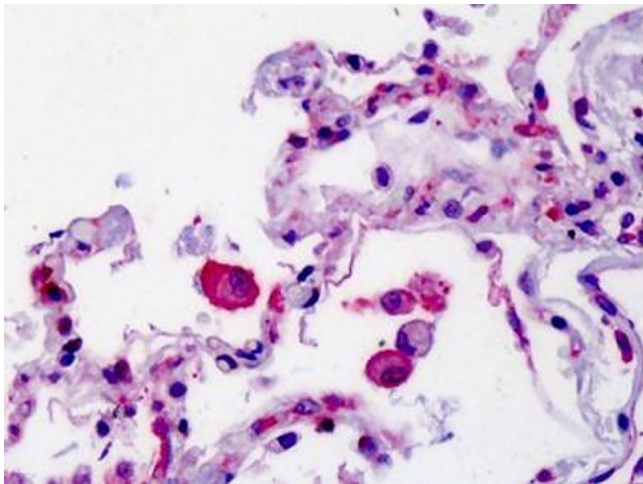
Handling Advice: Avoid repeated freezing and thawing.

Storage: -20 °C



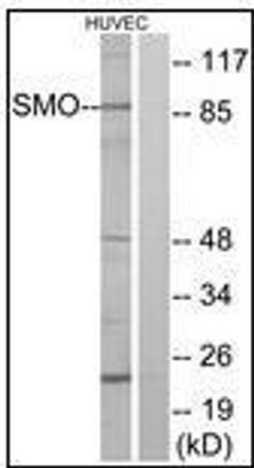
Immunohistochemistry (Paraffin-embedded Sections)

Image 1. Human Liver: Formalin-Fixed, Paraffin-Embedded (FFPE)



Immunohistochemistry (Paraffin-embedded Sections)

Image 2. Human Lung: Formalin-Fixed, Paraffin-Embedded (FFPE)



Western Blotting

Image 3. Western blot analysis of extracts from HuvEc cells, using SMO Antibody. The lane on the right is treated with the synthesized peptide.