

Datasheet for ABIN615996  
**anti-XRCC3 antibody (AA 202-296)**



[Go to Product page](#)

2 Images

## Overview

Quantity:	0.1 mL
Target:	XRCC3
Binding Specificity:	AA 202-296
Reactivity:	Human
Host:	Rabbit
Clonality:	Polyclonal
Conjugate:	This XRCC3 antibody is un-conjugated
Application:	Western Blotting (WB), Immunofluorescence (IF)

## Product Details

Immunogen:	Recombinant protein fragment contain a sequence corresponding to a region within amino acids 202 and 296 of Human XRCC3
Isotype:	IgG
Specificity:	Recognizes XRCC3. Cellular Localization: Nucleus.
Cross-Reactivity (Details):	Species reactivity (tested):Human.
Purification:	Antigen-Affinity Chromatography.

## Target Details

Target:	XRCC3
---------	-------

## Target Details

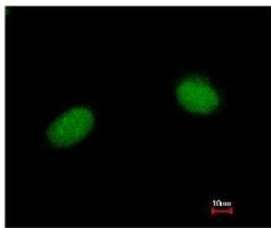
Alternative Name:	XRCC3 ( <a href="#">XRCC3 Products</a> )
Background:	This gene encodes a member of the RecA/Rad51-related protein family that participates in homologous recombination to maintain chromosome stability and repair DNA damage. This gene functionally complements Chinese hamster irs1SF, a repair-deficient mutant that exhibits hypersensitivity to a number of different DNA-damaging agents and is chromosomally unstable. A rare microsatellite polymorphism in this gene is associated with cancer in patients of varying radiosensitivity. Alternatively spliced transcript variants encoding the same protein have been identifiedSynonyms: DNA repair protein XRCC3, X-ray repair cross-complementing protein 3
Molecular Weight:	38 kDa
Gene ID:	7517, 9606
UniProt:	<a href="#">O43542</a>
Pathways:	<a href="#">DNA Damage Repair</a>

## Application Details

Application Notes:	Optimal working dilution should be determined by the investigator.
Restrictions:	For Research Use only

## Handling

Format:	Liquid
Concentration:	1.0 mg/mL
Buffer:	0.1 M Tris, 0.1 M Glycine, 10 % Glycerol ( pH 7) and 0.01 % Thimerosal as preservative.
Preservative:	Thimerosal (Merthiolate)
Precaution of Use:	This product contains thimerosal (merthiolate): a POISONOUS AND HAZARDOUS SUBSTANCE which should be handled by trained staff only.
Handling Advice:	Avoid repeated freezing and thawing.
Storage:	-20 °C
Storage Comment:	Store the antibody undiluted (in aliquots) at -20 °C.



Merged with DNA probe



Immunofluorescence

**Image 1.** Immunofluorescence staining of Paraformaldehyde-Fixed HeLa using of AP23777PU-N XRCC3 antibody at 1/200 dilution.

Western Blotting

**Image 2.** Western Blot using AP23777PU-N XRCC3 antibody at 1/1000 dilution. Sample (30 µg of whole cell lysate) A: Hep G2 7.5% SDS PAGE

