

Datasheet for ABIN6166144
anti-Nucleolin antibody

9 Images

[Go to Product page](#)

Overview

Quantity:	50 µL
Target:	Nucleolin (NCL)
Reactivity:	Human
Host:	Mouse
Clonality:	Monoclonal
Conjugate:	This Nucleolin antibody is un-conjugated
Application:	Western Blotting (WB), Immunohistochemistry (IHC), Immunofluorescence (IF), Flow Cytometry (FACS), Immunostaining (ISt)

Product Details

Purpose:	Mouse Monoclonal anti-Nucleolin (NCL/902), Purified, BSA-free
Immunogen:	Recombinant human NCL protein
Clone:	NCL-902
Isotype:	IgG1 kappa
Characteristics:	This antibody recognizes a protein of ~76 kDa, which is identified as Nucleolin (NCL). It is the major nucleolar phosphoprotein of growing eukaryotic cells. NCL is located mainly in dense fibrillar regions of the nucleolus. It is found associated with intranucleolar chromatin and pre-ribosomal particles. Human NCL gene consists of 14 exons with 13 introns and spans approximately 11kb. It induces chromatin decondensation by binding to histone H1. It is thought to play a role in pre-rRNA transcription and ribosome assembly. This MAb can be used to stain the nucleoli in cell or tissue preparations and can be used as a marker of the nucleoli in

Product Details

subcellular fractions. It produces a speckled pattern in the nuclei of cells of normal and malignant cells and may be used to stain the nucleoli of cells in fixed or frozen tissue sections. It can be used with paraformaldehyde fixed frozen tissue or cell preparations and formalin fixed, paraffin-embedded tissue sections. Primary antibodies are available purified, or with a selection of fluorescent CF® dyes and other labels. CF® dyes offer exceptional brightness and photostability. Note: Conjugates of blue fluorescent dyes like CF®405S and CF®405M are not recommended for detecting low abundance targets, because blue dyes have lower fluorescence and can give higher non-specific background than other dye colors.

Purification: Purified

Target Details

Target: Nucleolin (NCL)

Alternative Name: Nucleolin ([NCL Products](#))

Background: NCL, Nucl, Nucleolin, Protein C23

Molecular Weight: 76 kDa

Gene ID: 4691, 79110

UniProt: [P19338](#)

Pathways: [Ribonucleoprotein Complex Subunit Organization](#)

Application Details

Application Notes: Does not react with mouse, rat or cow, others not known

- Immunohistology (formalin)
- Staining of formalin-fixed tissues is enhanced by boiling tissue sections in 10 mM citrate buffer, pH 6.0, for 10-20 min followed by cooling at RT for 20 minutes
- Immunofluorescence 0.5-1 µg/mL
- Flow Cytometry 0.5-1 µg/million cells/0.1 mL
- Western blotting 0.5-1 µg/mL
- Optimal dilution for a specific application should be determined by user

Comment: All human Cells. Testis, Ovary, Uterus, Endometrial or Hodgkin s lymphoma

Restrictions: For Research Use only

Handling

Format:	Liquid
Concentration:	1 mg/mL
Buffer:	PBS (no BSA, no azide)
Preservative:	Azide free

Images

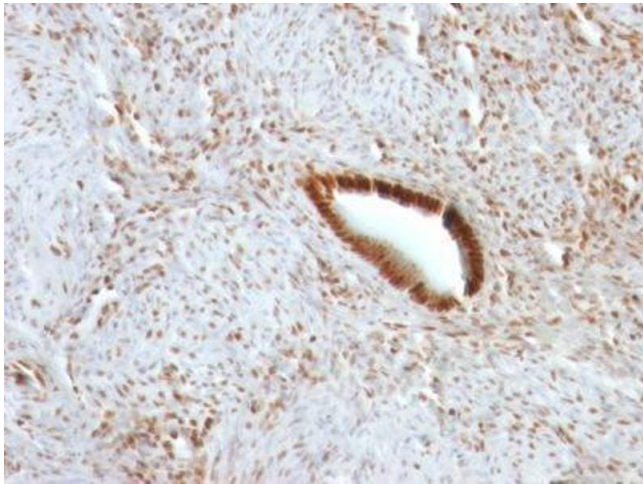


Image 1.

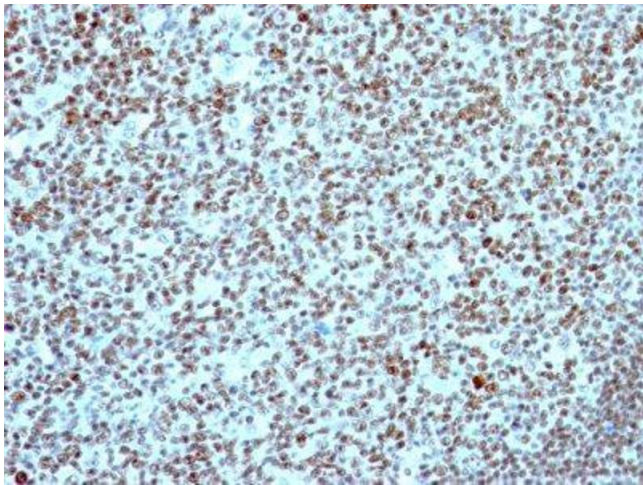
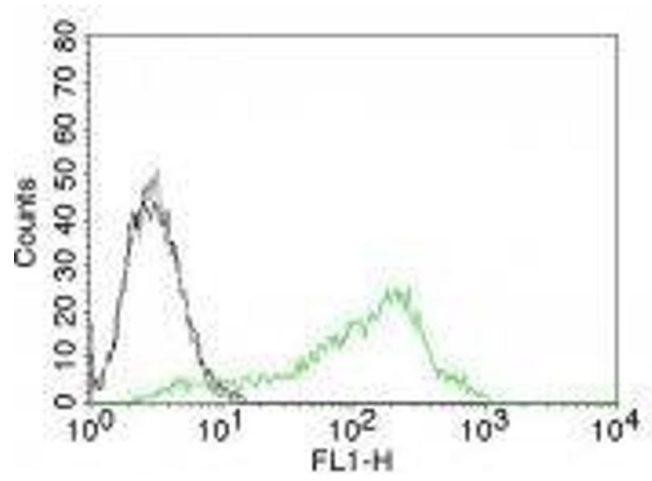


Image 2.

Image 3.



Please check the [product details page](#) for more images. Overall 9 images are available for ABIN6166144.